

# VURSA *kd* SERIES TUB / SHOWER

Patent No.: US 8,918,927 B1

**Oasis**

TS3P-6030R ABF / 5BAR shown



MULTI-PIECE MODEL

TS3P-6030 (3-piece)

Rough-In Dimensions

60" wide x 31-1/4" deep x 77-1/2" high (w/ 16-inch apron)

Finished Dimensions

60" wide x 30" deep x 76-1/4" high (w/ 16-inch apron)

Unit Features



- Three - Piece Fiberglass Composite Construction
- Sanitary Grade Polyester Gelcoat Surface
- Front-Side Installation With Minimal Sealant Requirements
- 2" Dia. End Drain
- 2-1/2" Dia. Overflow
- Apron Drip Ledge Minimizes Water Migration
- Corner Accessory Ledge
- Generous, Multi-Level Back Wall Shelving
- Wall Design Accommodates Grab Bar Applications
- Textured Floor Pattern
- 1/2-inch Balsa Wood Core Floor Structure

Special Notes

- Optional ABF Model (provides 3-inches of drain clearance)
- UL Listed Whirlpool System Available
- 'QwikClic' Technology (Patents Pending)
- Factory Applied Reinforcement Packages Available
- Factory Applied Bar Configurations Available
- Factory Applied ADA & ANSI Compliant Bar & Seat Packages Available

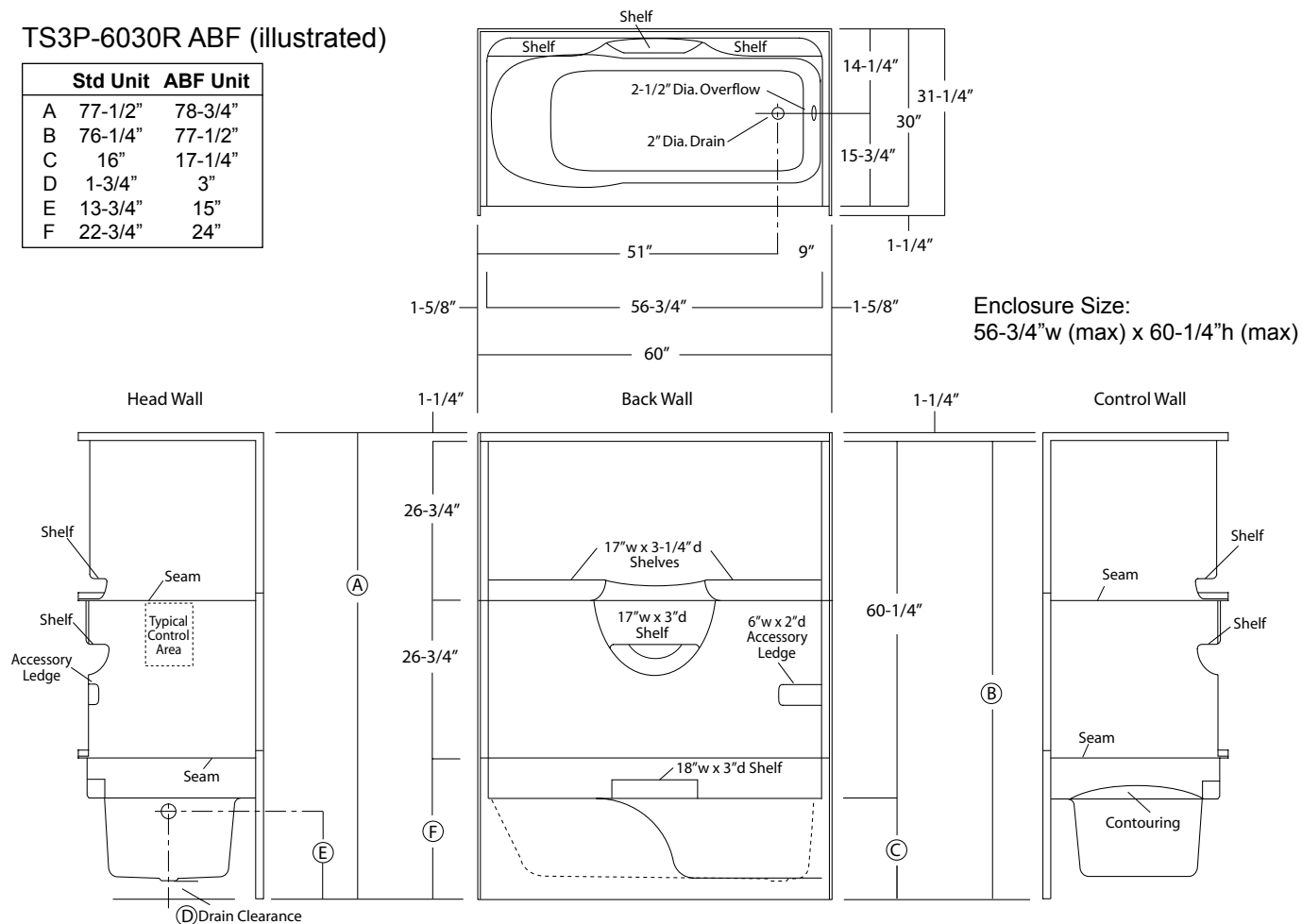
Order No.: TS3P-6030R (RH drain / 16" apron)  
TS3P-6030L (LH drain / 16" apron)

Order No.: TS3P-6030R ABF (RH drain / 17-1/4" apron)  
TS3P-6030L ABF (LH drain / 17-1/4" apron)

60" x 30", 3-piece gelcoated fiberglass tub/shower with 'QuikClic', front side installation, 16" apron (1-3/4" drain clearance), multi-level back wall shelves, corner accessory ledge, contoured neck rest, and drain on end indicated.

TS3P-6030R ABF (illustrated)

|   | Std Unit | ABF Unit |
|---|----------|----------|
| A | 77-1/2"  | 78-3/4"  |
| B | 76-1/4"  | 77-1/2"  |
| C | 16"      | 17-1/4"  |
| D | 1-3/4"   | 3"       |
| E | 13-3/4"  | 15"      |
| F | 22-3/4"  | 24"      |



## Package Order No.: 6P (Builder System)

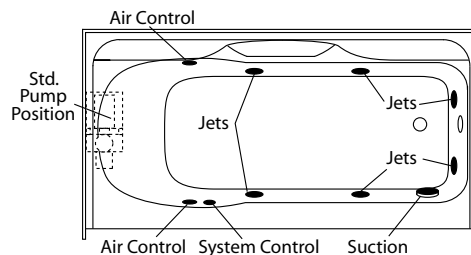
Package includes: 6-Adjustable jets, twin air injection controls, pneumatic on/off control, and 5.50 amp pump/motor.

Options: In-Line Heater (1\*)  
SS Shower Rod (1\*)

(order: ILH)  
(order: ADD/SHWR ROD-TS)

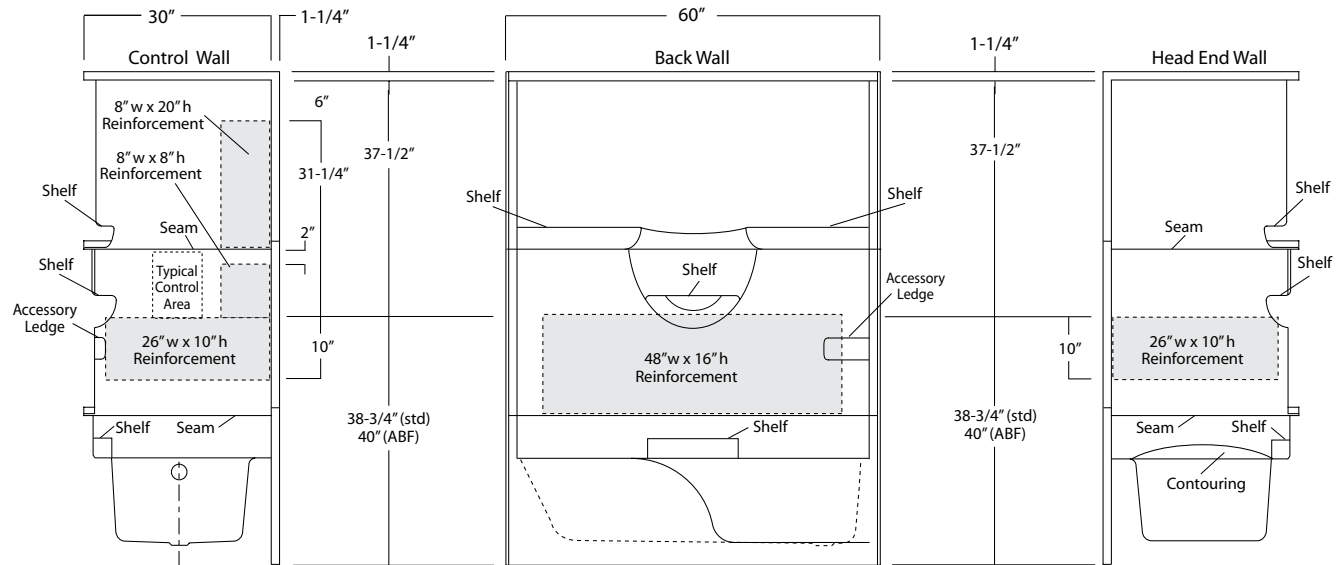
Notes: (1\*) Factory installed options  
System available with component packages.

Sump Dimensions: 51" long x 20" wide x 13-1/4" deep  
Sump Capacity: 40 gal. (unoccupied - to overflow)  
Whirlpool Operating: 34 gal.



**Package Order No.: FH (Fair Housing wall reinforcement)**

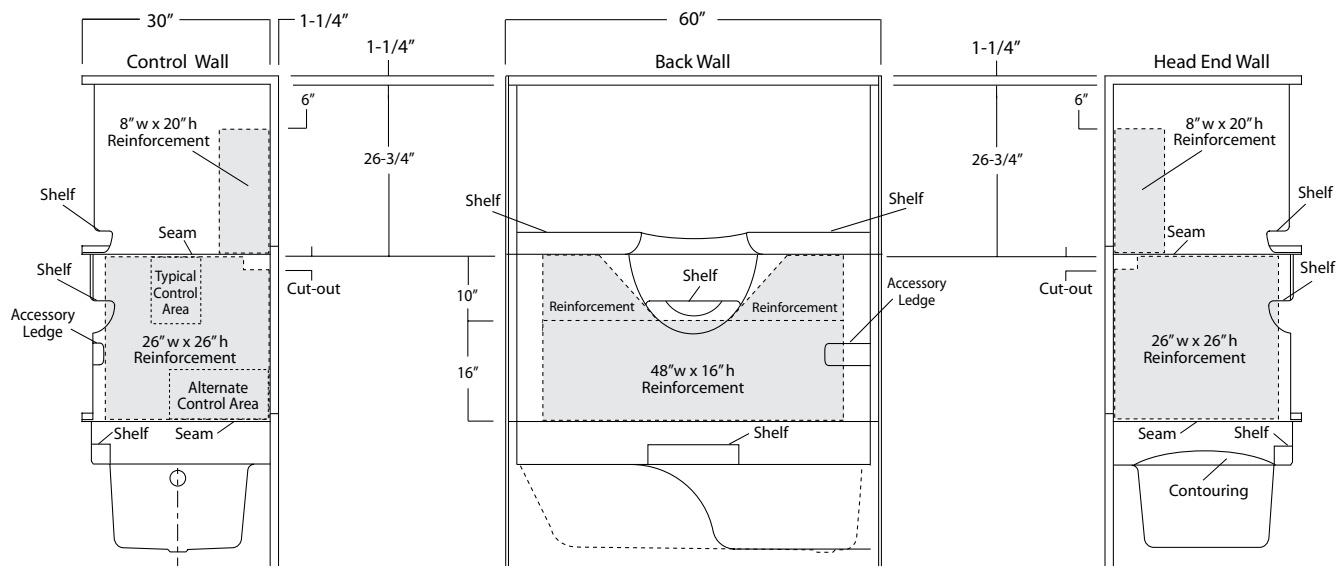
Package Includes: Factory applied, HUD-FHA compliant (Fair Housing), structurally reinforced wall areas (as shown) for independent field application of bars.



**Package Order No.: 3SM (3-side, mid-level wall reinforcement)**

Package Includes: Factory applied, 3-side, mid-level, structurally reinforced wall areas (as shown), exceeding 'Fair Housing' (HUD/FHA) requirements, for independent field application of bars.

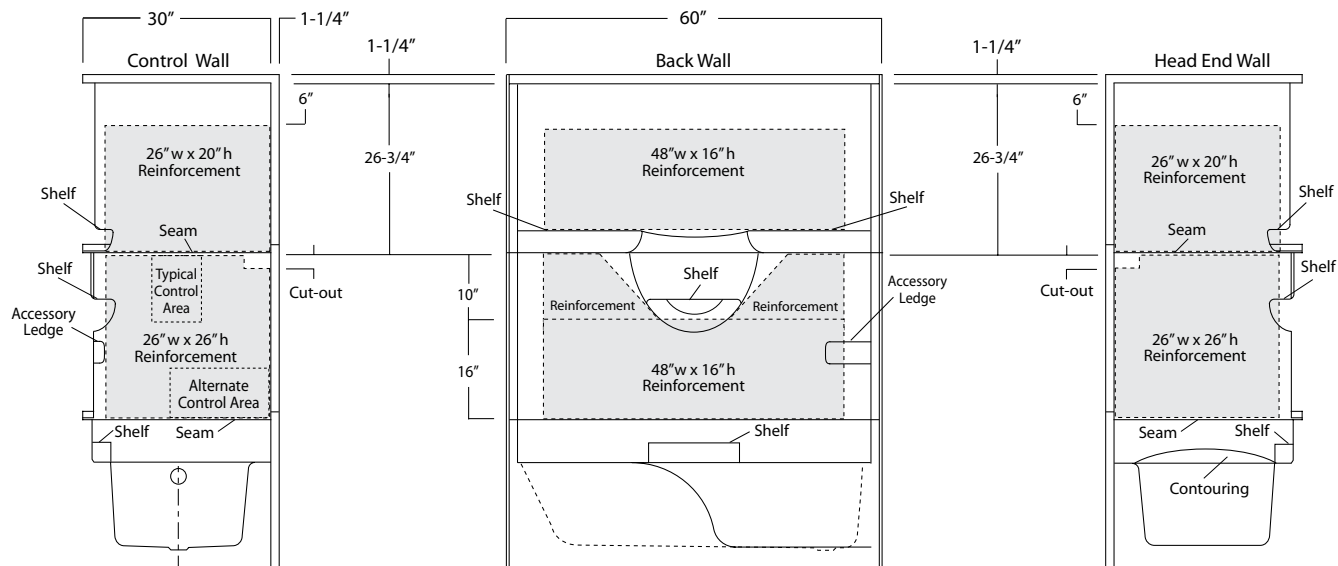
NOTE: Factory installed component packages available with listed reinforcement.



## Package Order No.: 3SF (3-side, full-wall reinforcement)

Package Includes: Factory applied, 3-side, full-wrap, structurally reinforced wall areas (as shown), exceeding 'Fair Housing' (HUD/FHA) requirements, for independent field application of bars.

NOTE: Factory installed component packages available with listed reinforcement.



## Package Order No.: BP1-60 (2-bar only package)

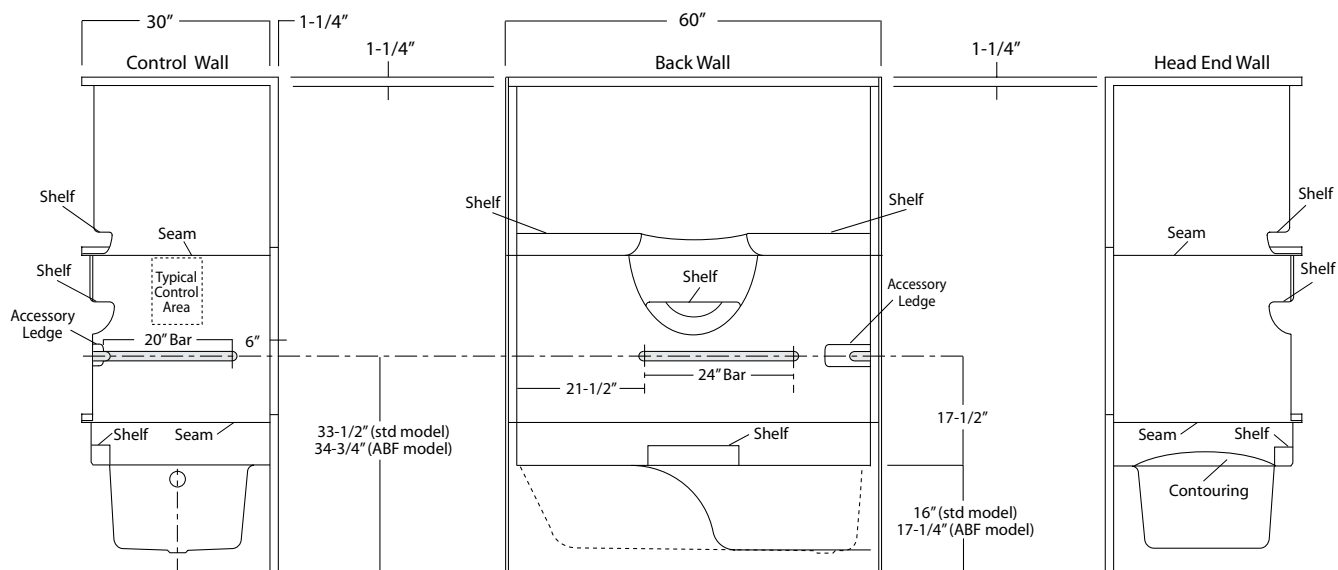
Upgrade Package No.: BP1-60 WHT (1-1/4" dia., white powder coat, 2-bar only package)

BP1-60 SNK (1-1/4" dia., satin nickel, 2-bar only package)

Package Includes: Factory installed, 1-1/2" dia. stainless steel, 2-bar package with basic reinforcement for components (as shown).

NOTES: Enhanced reinforcement available with listed component package.

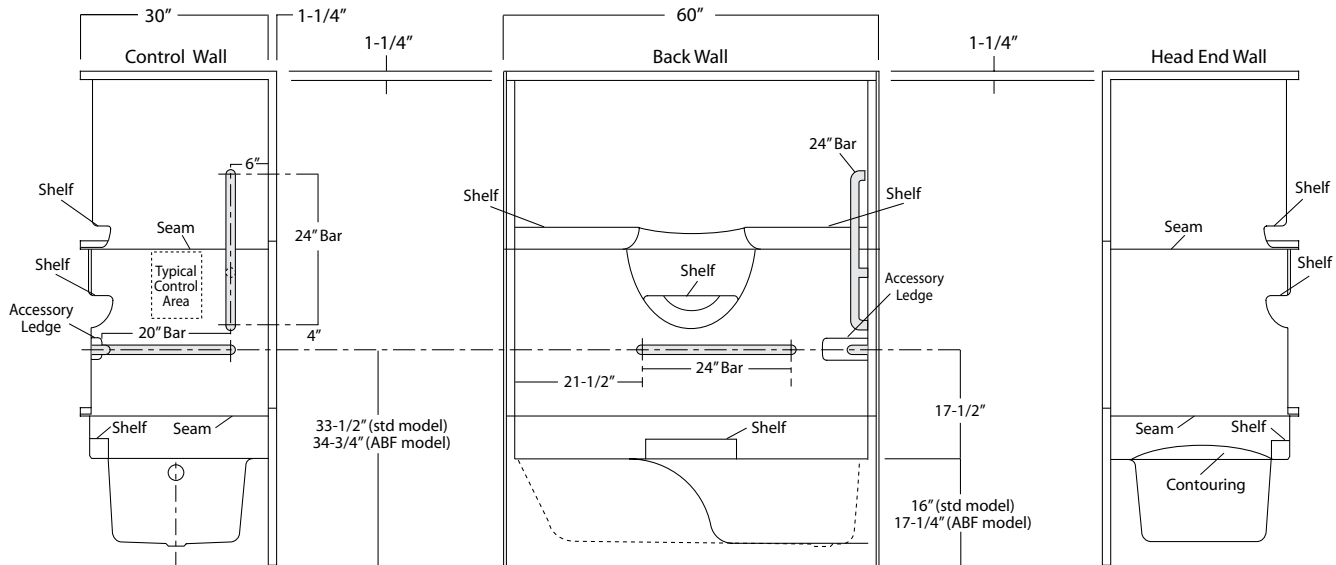
Positioning of factory installed components allow for the installation of a shower enclosure.



**Package Order No.:** BP2-60 (3-bar only package)  
**Upgrade Package No.:** BP2-60 WHT (1-1/4" dia., white powder coat, 3-bar only package)  
 BP2-60 SNK (1-1/4" dia., satin nickel, 3-bar only package)

Package Includes: Factory installed, 1-1/2" dia. stainless steel, 3-bar package with basic reinforcement for components (as shown).  
 NOTES: Enhanced reinforcement available with listed component package.

Positioning of factory installed components allow for the installation of a shower enclosure.

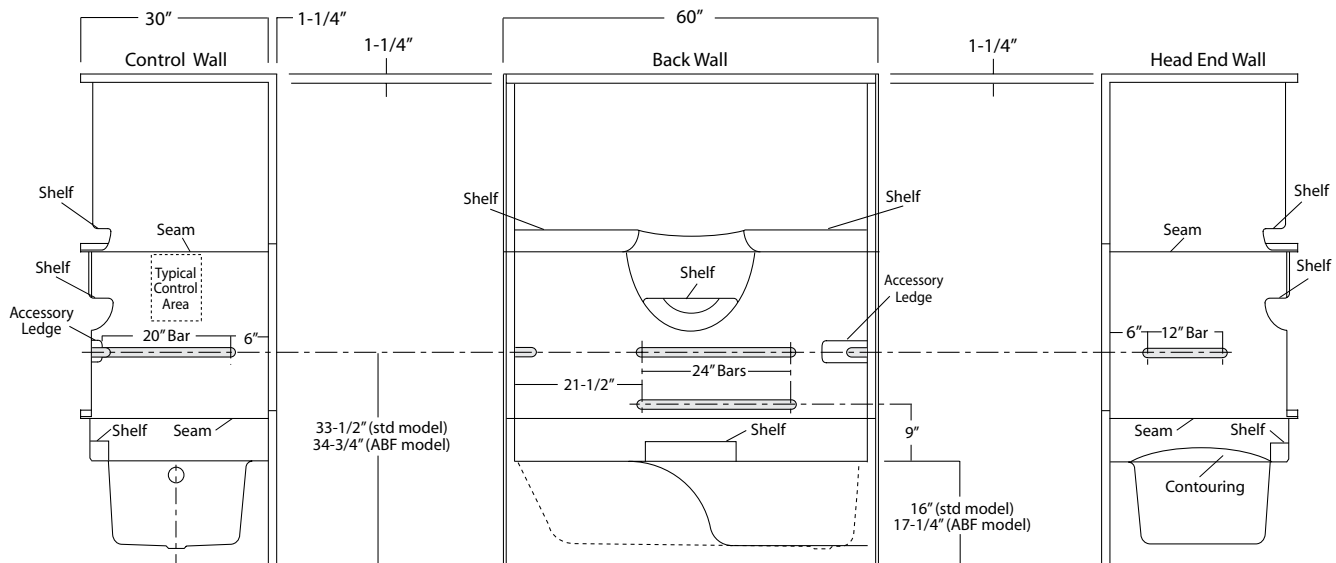


**Package Order No.:** 4BAR (4-bar only package)  
**Upgrade Package No.:** 4BAR WHT (1-1/4" dia., white powder coat, 4-bar only package)  
 4BAR SNK (1-1/4" dia., satin nickel, 4-bar only package)

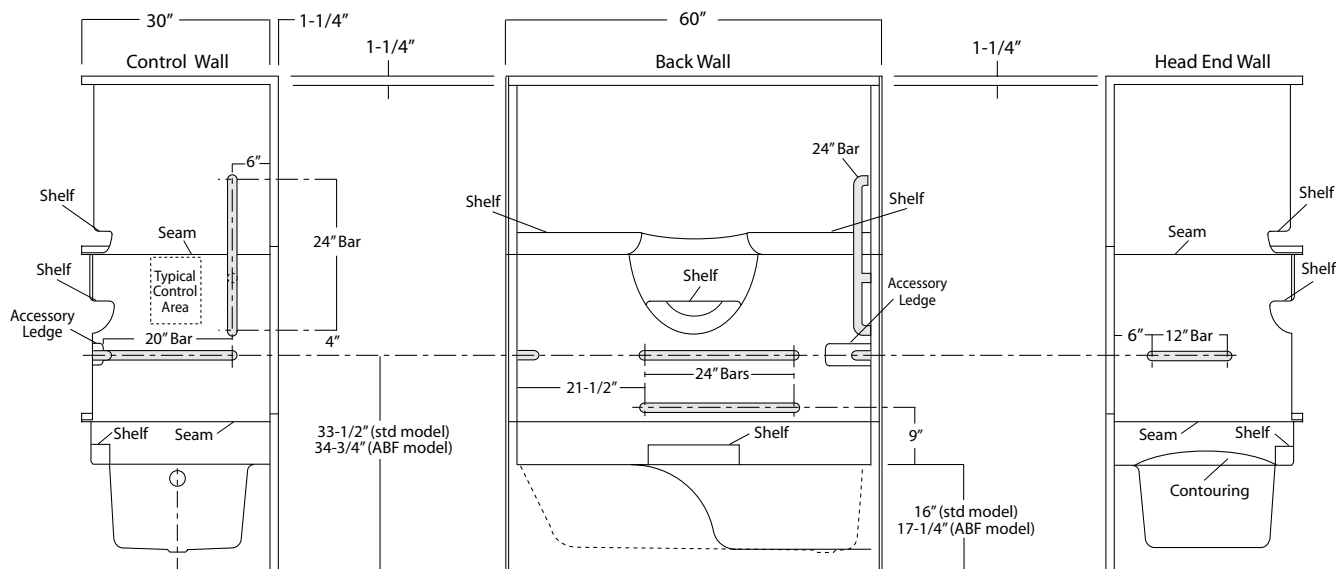
Package Includes: Factory installed, 1-1/2" dia. stainless steel, 4-bar package with basic reinforcement for components (as shown) (replicates ADA10 bar configuration less seat and shower rod).

NOTES: Enhanced reinforcement available with listed component package.

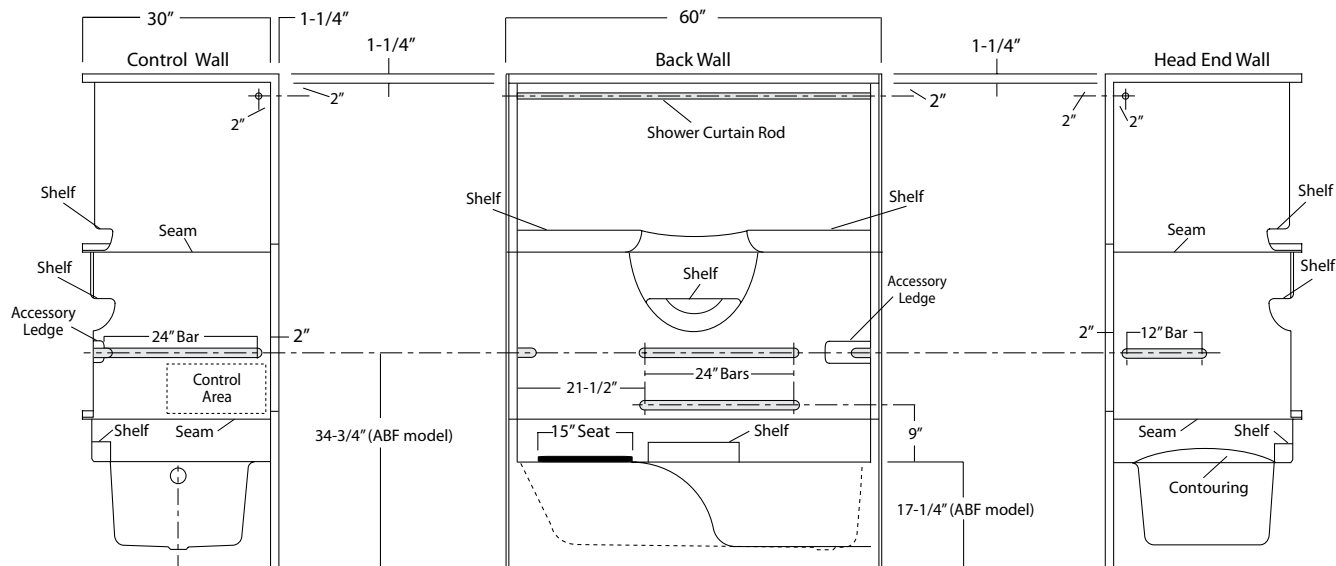
Positioning of factory installed components allow for the installation of a shower enclosure.



Positioning of factory installed components allow for the installation of a shower enclosure.



Optional, white, 150 denier fabric, bottom weighted shower curtain with integrated rings (#CRT-TS).



**Package Order No.:   ANS17-FLD (folding seat - ICC ANSI compliant pkg)**  
**ANS17-REM (removable seat - ICC ANSI compliant pkg)**

Package Includes: Factory installed seat, 1-1/2" dia. stainless steel bars and shower curtain rod in compliance with ICC ANSI-A117.1-2017 requirements.

NOTES: ANS17 is a 5-bar package. Check installation site regulations for compliance requirements.

Enhanced reinforcement available with listed component package.

Shower curtain rod may be deleted upon request without affecting compliance.

Use of ABF unit is required for seat height compliance.

Positioning of factory installed components prohibit the installation of a shower enclosure.

Optional, white, 150 denier fabric, bottom weighted shower curtain with integrated rings (#CRT-TS).

