

VURSA SERIES SHOWER STALL

Oasis®

WX Wall Flange Detail



48-INCH MODEL

SH-WX-4838 (no seat)

Rough-In Dimensions

48" wide x 37" deep x 76-3/4" high (w/ 4-inch dam)

Finished Dimensions

48" wide x 38" deep x 75-1/2" high (w/ 4-inch dam)

Unit Features



- One - Piece Fiberglass Composite Construction
- Sanitary Grade Polyester Gelcoat Surface
- 3-3/8" Dia. Center Drain (see following pages)
- Twin, Elevated Corner Accessory Towers
- Expanded Entry Wall Reveal Minimizes Transfer Space
- Flat Wall Design To Accommodate Grab Bar & Seat Applications
- Textured Floor Pattern
- Balsa Wood Core Floor Structure

Special Notes

- Optional ABF Model (provides 3 Inches of drain clearance)
- Factory Applied Reinforcement Packages Available
- Factory Applied Bar Only and Bar & Seat Packages Available

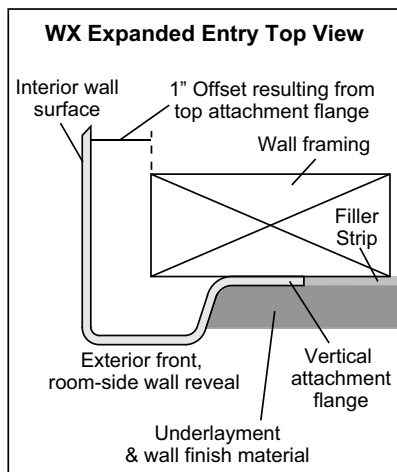
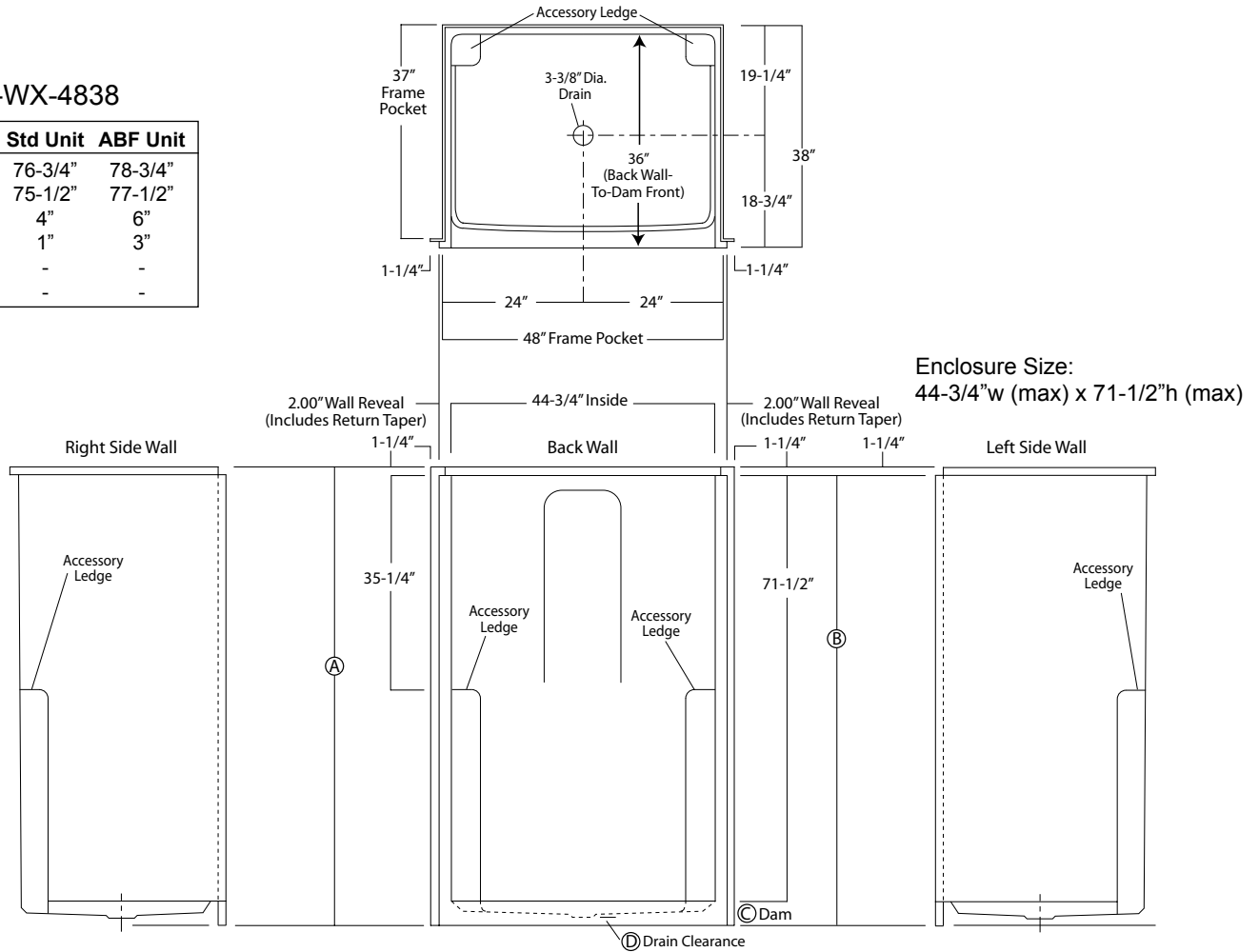
Order No.: SH-WX-4838 (4" dam)

SH-WX-4838 ABF (6" dam)

48" x 38", one-piece gelcoated fiberglass, flat-wall shower stall with expanded shower entry wall reveal, 4" low profile dam (1" drain clearance), elevated corner accessory towers, wall surround, and center drain.

SH-WX-4838

	Std Unit	ABF Unit
A	76-3/4"	78-3/4"
B	75-1/2"	77-1/2"
C	4"	6"
D	1"	3"
E	-	-
F	-	-



Photographic images may include optional components and appear different than actual product. Dimensions shown are maximum. Due to the nature of the materials involved, actual unit dimensions can vary (tolerances: +/-1/8 inch). Oasis reserves the right to modify or discontinue product and/or associated equipment without prior written or verbal notification or obligation.