

Optima SERIES SHOWER STALL

Oasis



60-INCH MODEL

SHT-6038

Rough-In Dimensions

60" wide x 39-1/4" deep x 75-3/4" high (w/ 3-inch dam)

Finished Dimensions

60" wide x 38" deep x 74-1/2" high (w/ 3-inch dam)

Unit Features



- One - Piece Fiberglass Composite Construction
- Sanitary Grade Polyester Gelcoat Surface
- Simulated Tile Walls
- 3-3/8" Dia. Center Drain (see following pages)
- Back Wall Accessory Shelf
- Flat Wall Design To Accommodate Grab Bar & Seat Applications
- Low Profile Dam (standard)
- Textured Floor Pattern
- Balsa Wood Core Floor Structure

Special Notes

- Optional ABF Model (provides 3 Inches of drain clearance)
- Factory Applied Reinforcement Packages Available
- Factory Applied Bar Only and Bar & Seat Packages Available

SHT-6038 ABF (5" dam)

SHT-6038 (ABF illust.)

Technical drawing of the interior of a refrigerator, showing dimensions and features:

- Accessory Shelf:** Located at the top, with a width of 42".
- 3-3/8" Dia. Drain:** A circular drain hole located in the center of the bottom panel.
- 3" Flat Area:** A rectangular area on the bottom panel, centered under the drain.
- Dimensions:**
 - Top Section:** 19" (height of the upper compartment).
 - Bottom Section:** 19" (height of the lower compartment).
 - Right Side:** 39-1/4" (total height), 38" (height of the upper compartment), and 1-1/4" (height of the lower compartment).
 - Bottom Panel:** 28-3/8" (width of the flat area), 28-3/8" (width of the lower compartment), and 56-3/4" (total width).
 - Left Side:** 1-5/8" (width of the upper compartment).
 - Right Side (Bottom):** 1-5/8" (width of the lower compartment).
 - Bottom Panel (Total):** 60" (width).

Technical drawing of the rear view of the unit, showing dimensions and labels for the Right Side Wall, Back Wall, and Left Side Wall.

Right Side Wall:

- Top edge: 3-1/2"
- Typical Control Area (dashed box)
- Bottom edge: 36"
- Label: (D) Drain Clearance

Back Wall:

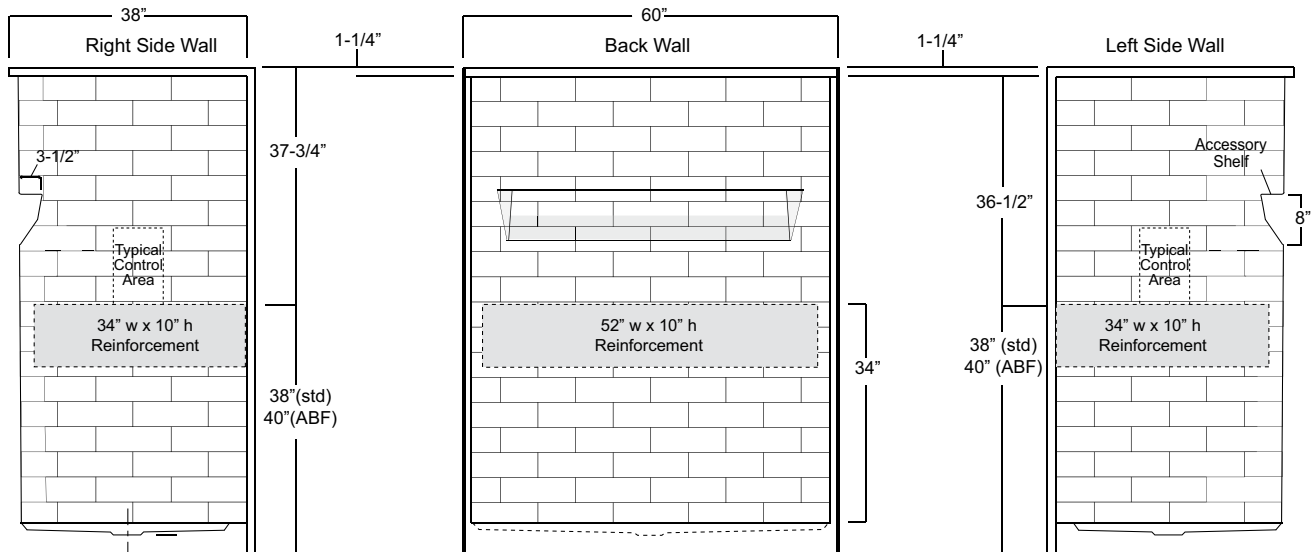
- Top edge: 1-1/4"
- Left side: 17-1/2"
- Right side: 54-1/2"
- Label: (A)

Left Side Wall:

- Top edge: 1-1/4"
- Left side: 71-1/2"
- Right side: 8"
- Accessory Shelf (dashed box)
- Typical Control Area (dashed box)
- Label: (B)
- Label: (C) Dam

Package Order No.: FH (Fair Housing wall reinforcement)

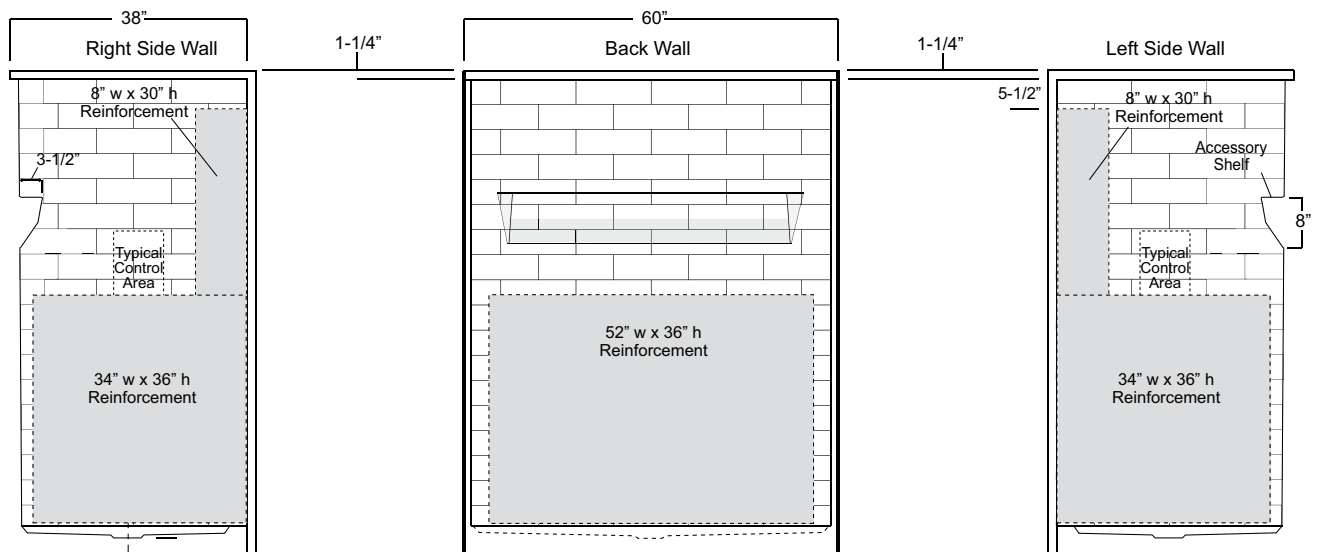
Package Includes: Factory applied, HUD-FHA compliant (Fair Housing), structurally reinforced wall areas (as shown) for the independent field application of bars.



Package Order No.: 3SM (3-side, mid-level wall reinforcement)

Package Includes: Factory applied, 3-side, mid-level, structurally reinforced wall areas (as shown), exceeding 'Fair Housing' (HUD/FHA) requirements.

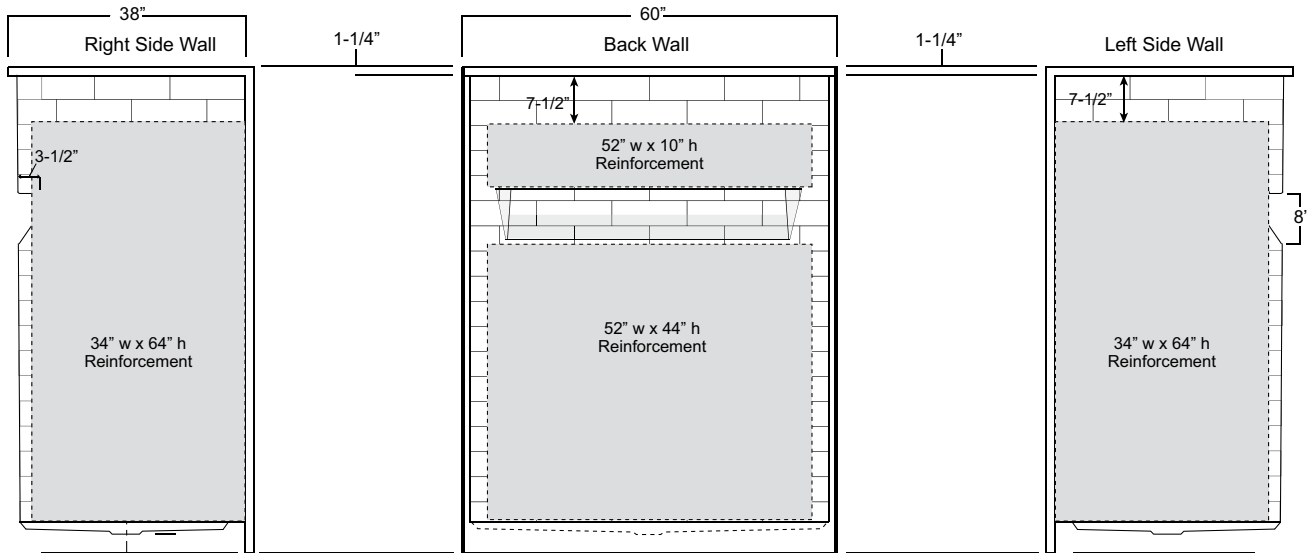
NOTE: Factory installed component packages available with listed reinforcement.



Package Order No.: 3SF (3-side, full-wall reinforcement)

Package Includes: Factory applied, 3-side, full-wrap, structurally reinforced wall areas (as shown), exceeding 'Fair Housing' (HUD/FHA) requirements, for the independent field application of bars.

NOTE: Factory installed component packages available with listed reinforcement.



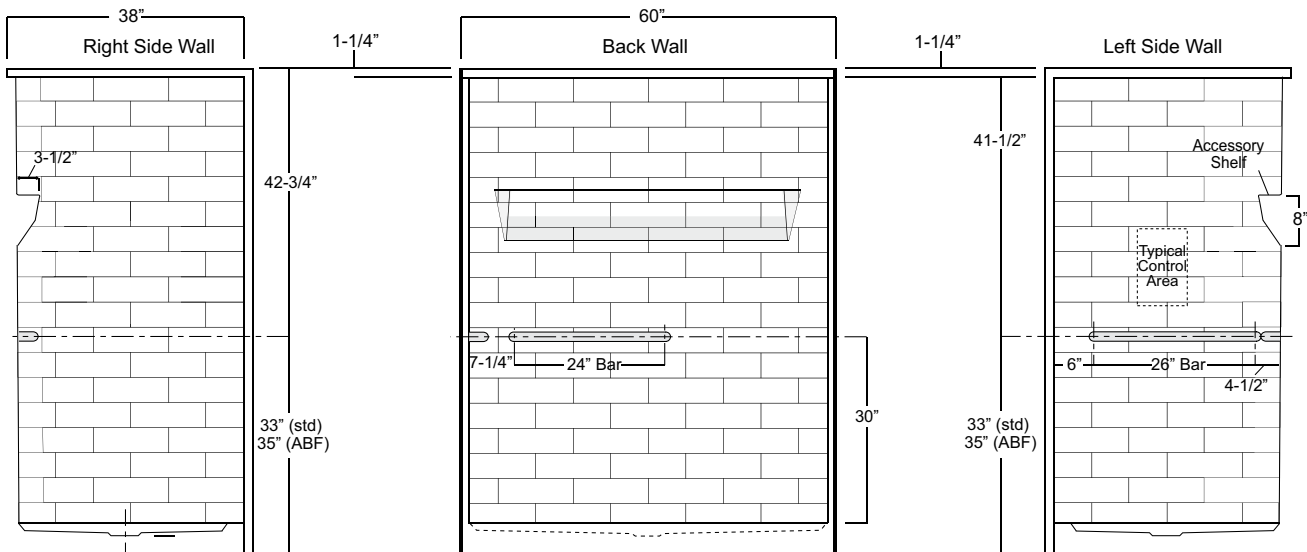
Package Order No.: BP1-60 (R or L) (2-bar only package)

Upgrade Package No.: BP1-60 (R or L) WHT (1-1/4" dia., white powder coat, 2-bar only package)

Package Includes: Factory installed, 1-1/4" dia. stainless steel, 2-bar package with basic reinforcement for components (as shown).

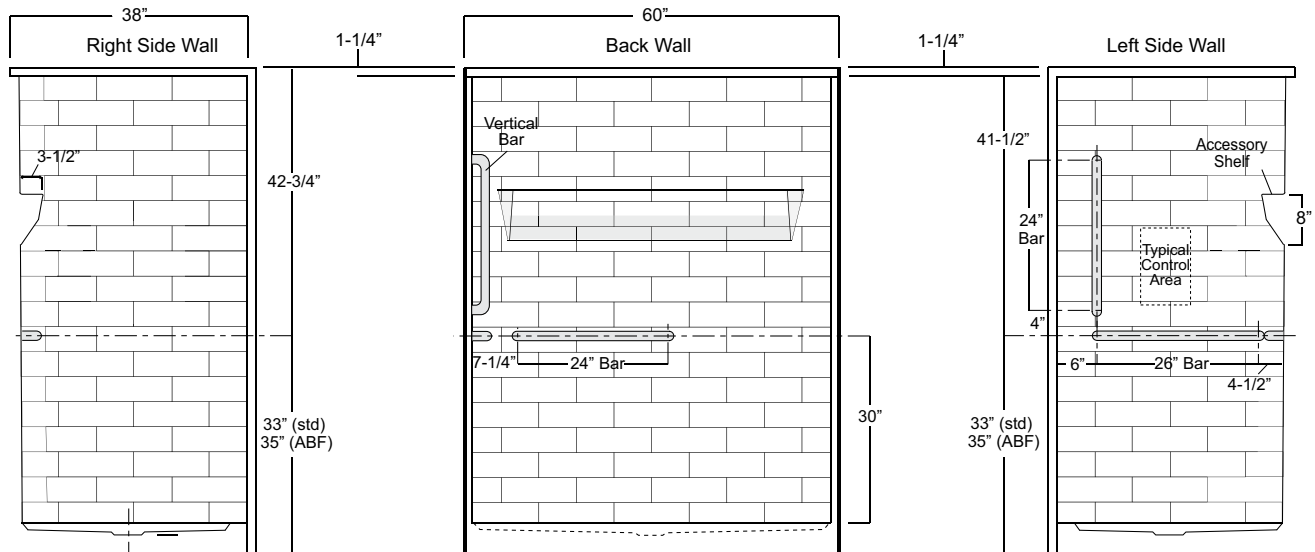
NOTES: Positioning of factory installed components allow for the installation of a shower enclosure.

"R or L" designates RH or LH control wall.



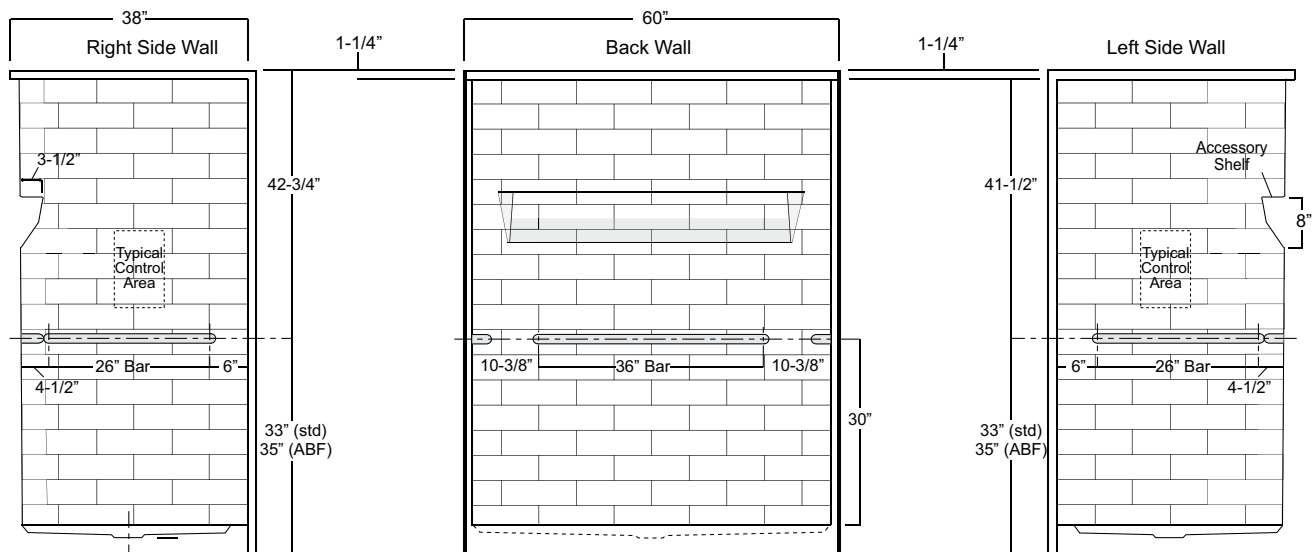
Package Order No.: BP2-60 (R or L) (3-bar only package)
Upgrade Package No.: BP2-60 (R or L) WHT (1-1/4" dia., white powder coat, 3-bar only package)

Package Includes: Factory installed, 1-1/2" dia. stainless steel, 3-bar package with basic reinforcement for components (as shown).
 NOTES: Positioning of factory installed components allow for the installation of a shower enclosure.
 "R or L" designates RH or LH control wall.



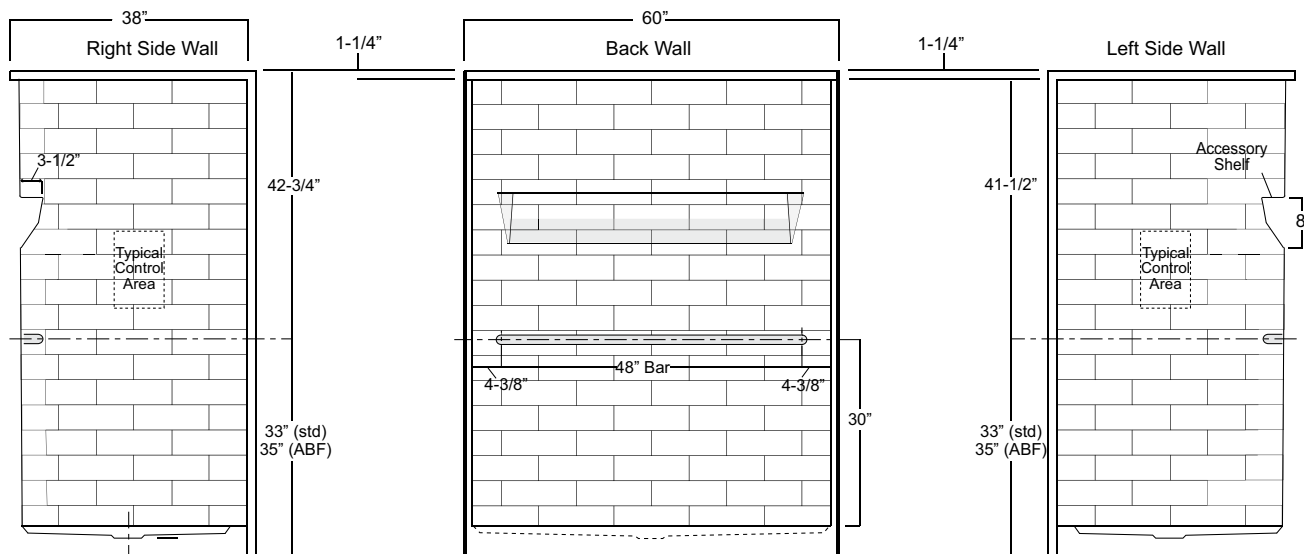
Package Order No.: BP3-60 (3-bar only package)
Upgrade Package No.: BP3-60 WHT (1-1/4" dia., white powder coat, 3-bar only package)

Package Includes: Factory installed, 1-1/2" dia. stainless steel, 3-bar package with basic reinforcement for components (as shown).
 NOTE: Positioning of factory installed components allow for the installation of a shower enclosure.



Package Order No.: BP5-60 (single-bar only package)
Upgrade Package No.: BP5-60 WHT (1-1/4" dia., white powder coat, single-bar only package)

Package Includes: Factory installed, 1-1/2" dia. stainless steel, single, back wall bar package (as shown).

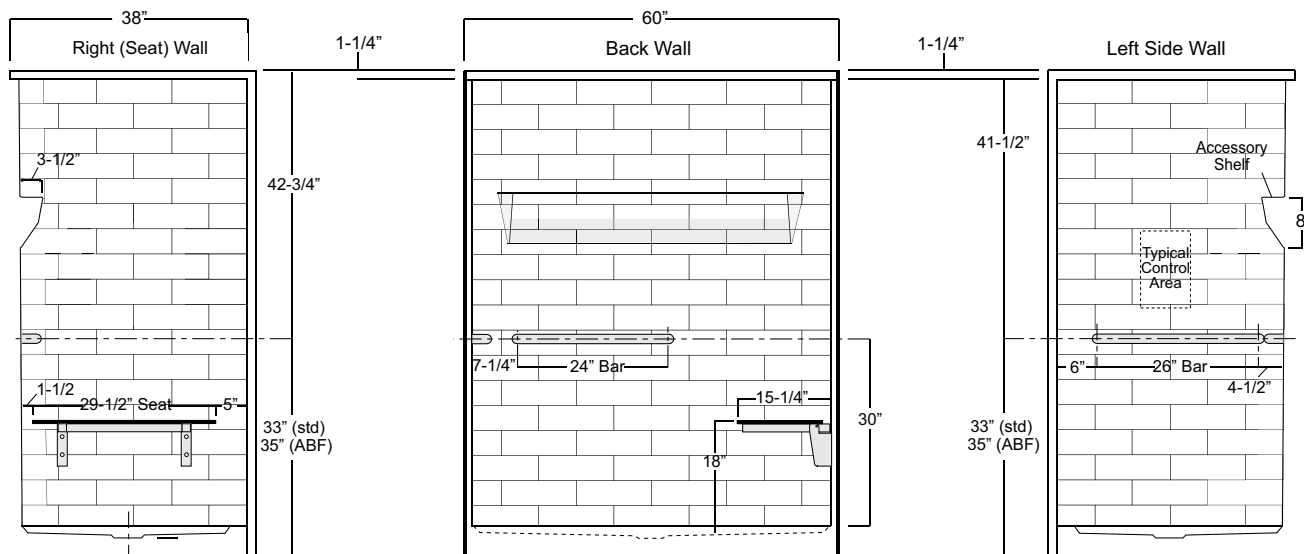


Package Order No.: TL-(RS or LS) (2-bar & folding seat package)
Upgrade Package No.: TL-(RS or LS) WHT (1-1/4" dia., white powder coat, 2-bar & folding seat package)

Package Includes: Factory installed, 1-1/2" dia. stainless steel, 2-bar and folding seat package with basic reinforcement for components (as shown).

NOTES: Positioning of factory installed components allow for the installation of a shower enclosure.

"RS or LS" designates seat wall.



Package Order No.: TLV-(RS or LS) (3-bar & folding seat package)

Upgrade Package No.: TLV-(RS or LS) WHT (1-1/4" dia., white powder coat, 3-bar & folding seat package)

Package Includes: Factory installed, 1-1/2" dia. stainless steel, 3-bar and folding seat package with basic reinforcement for components (as shown).

NOTES: Positioning of factory installed components allow for the installation of a shower enclosure.

"RS or LS" designates seat wall.

