

FLAT WALL SHOWER

Oasis

WX Wall Flange Detail



FLAT WALL MODEL

SHFW-WX3D-3837

Rough-In Dimensions

38" wide x 36" deep x 76-3/4" high

Finished Dimensions

38" wide x 37" deep x 75-1/2" high

Unit Features



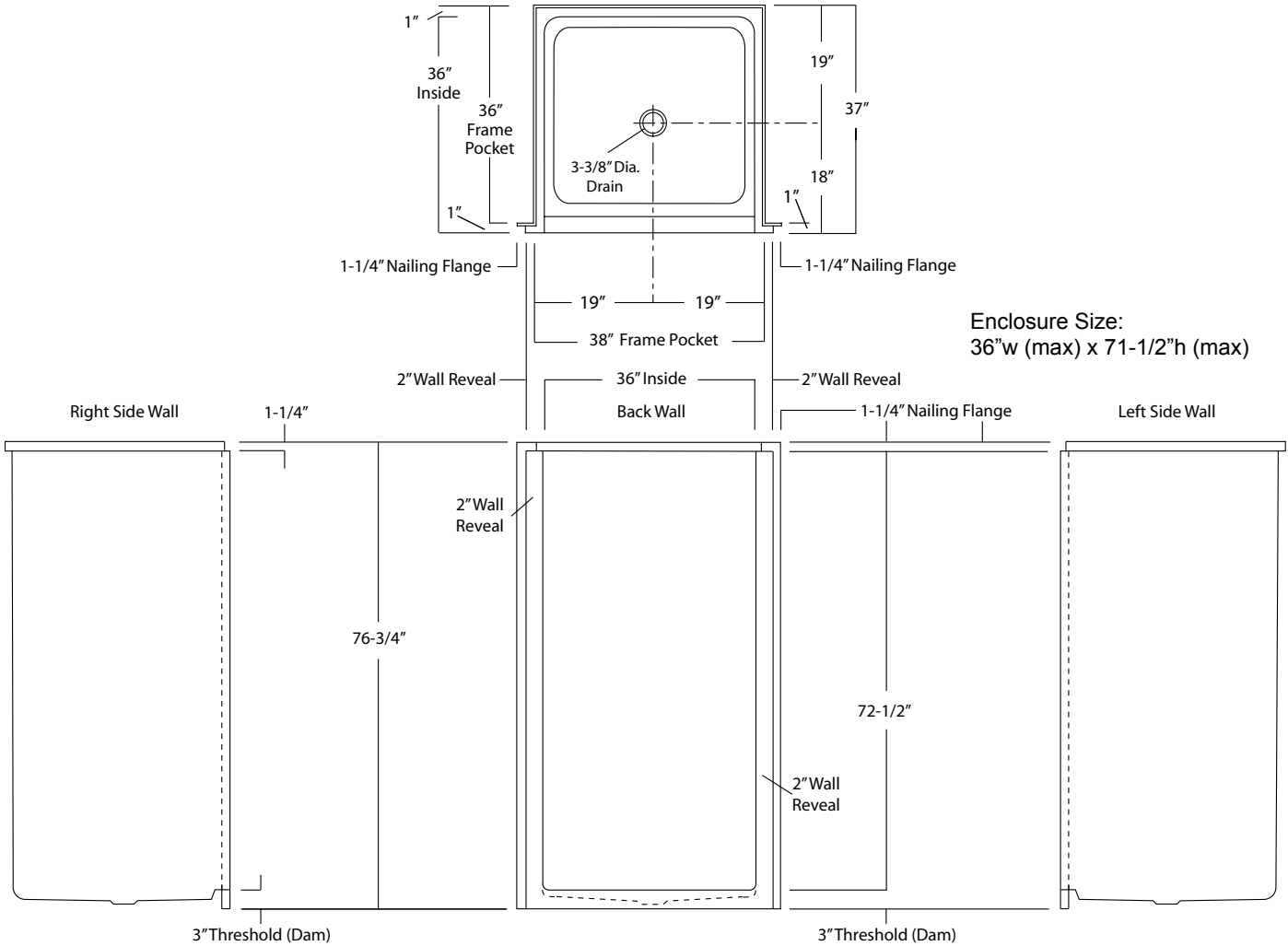
- One - Piece Fiberglass Composite Construction
- Sanitary Grade Polyester Gelcoat Surface
- 3-3/8" Dia. Center Drain (see reverse side for location)
- 3" High Finished Threshold
- Expanded Entry Wall Reveal Minimizes Transfer Space
- Flat Wall Design To Accommodate Grab Bar Applications
- Textured Floor Pattern
- Balsa Wood Core Floor Structure

Special Notes

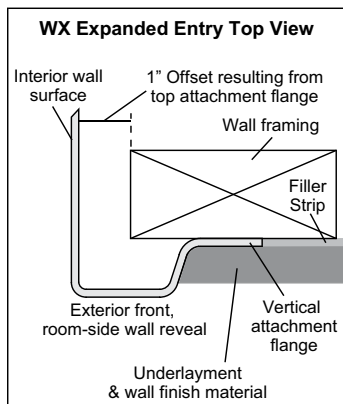
- Factory Applied Reinforcement Packages Available
- Factory Applied Bar Configurations Available

Order No.: SHFW-WX3D-3837

38" x 37" (36" x 36" interior dimension), one-piece gelcoated fiberglass, flat-wall shower stall with 3-inch high finished threshold, expanded shower entry wall reveal to reduce transfer space, wall surround, and center drain. Flat wall design allows for the independent installation of grab bars and seat.



NOTE: The raised threshold of this model DOES NOT meet ADA or ANSI compliance.



Photographic images may include optional components and appear different than actual product. Dimensions shown are maximum. Due to the nature of the materials involved, actual unit dimensions can vary (tolerances: +/-1/8 inch). Oasis reserves the right to modify or discontinue product and/or associated equipment without prior written or verbal notification or obligation.