

BARRIER-FREE SHOWER

Oasis

WX Wall & Floor Flange Detail



FLAT WALL MODEL

SHFW-WX-3837

Rough-In Dimensions

38" wide x 36" deep x 76-3/4" high

Finished Dimensions

38" wide x 37" deep x 75-1/2" high

Unit Features



- One - Piece Fiberglass Composite Construction
- Sanitary Grade Polyester Gelcoat Surface
- 3-3/8" Dia. Center Drain (see reverse side for location)
- 1/2" Threshold To Aid In Keeping Water Within Confines of Unit
- Contoured Threshold To Aid Entry And Exit
- Expanded Entry Wall Reveal Minimizes Transfer Space
- 1" Floor Flange To Secure Unit Along Threshold
- Textured Floor Pattern

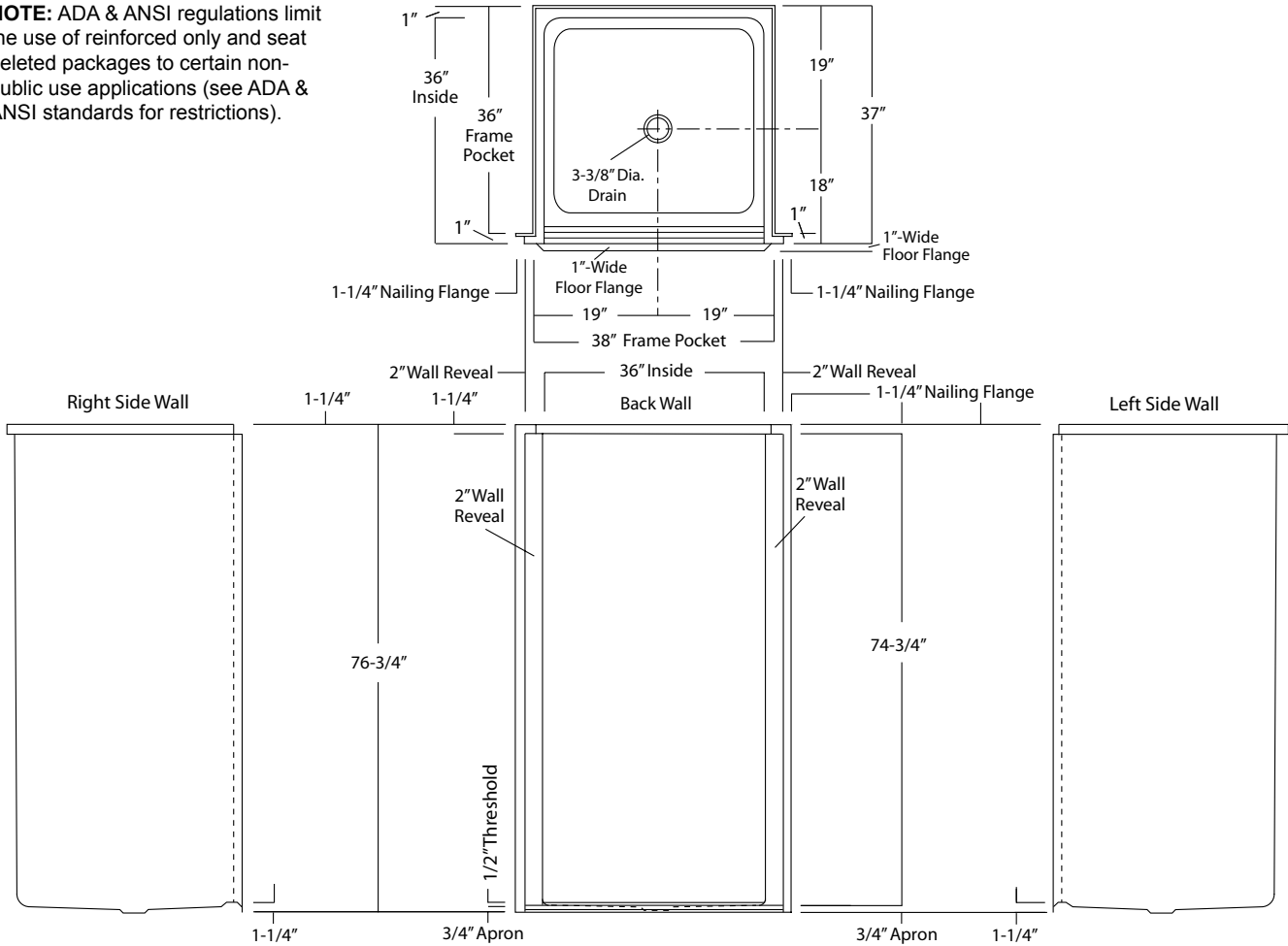
Special Notes

- Factory Applied Reinforcement Packages Available
- Factory Applied Bar Configurations Available
- Factory Applied ADA & ANSI Compliant Bar & Seat Packages Available

Order No.: SHFW-WX-3837

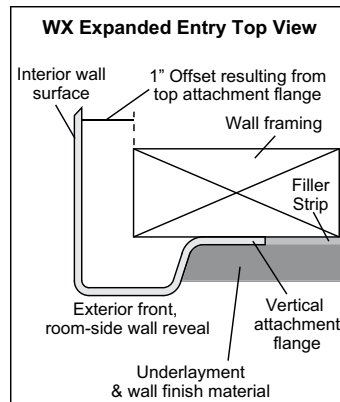
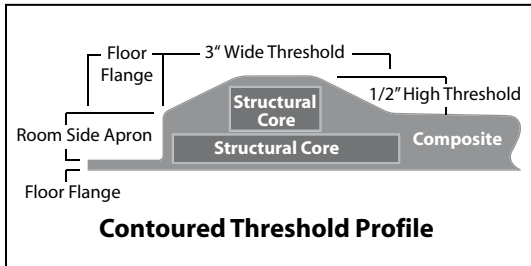
38" x 37" (36" x 36" interior dimension), one-piece gelcoated fiberglass, flat-wall shower stall with expanded shower entry wall reveal to reduce the transfer space from wheelchair, 1/2-inch high maximum finished threshold, floor attachment flange, wall surround, and center drain.

NOTE: ADA & ANSI regulations limit the use of reinforced only and seat deleted packages to certain non-public use applications (see ADA & ANSI standards for restrictions).



Package Order No.:

- | | | | |
|----------|----------------------------|--------------------------|---------------------------------------|
| Options: | SS Shower Rod (1*) | (order: ADD/SHWR ROD-TS) | Notes: (1*) Factory installed options |
| | SS Recessed Soap Dish (1*) | (order: SSD) | |
| | White, Ringless Curtain | (order: CRT-36) | |



Photographic images may include optional components and appear different than actual product. Dimensions shown are maximum. Due to the nature of the materials involved, actual unit dimensions can vary (tolerances: +/-1/8 inch). Oasis reserves the right to modify or discontinue product and/or associated equipment without prior written or verbal notification or obligation.