

ACRYLLUS SERIES  
'INTEGRAL DOME'  
SHOWER STALL

**Oasis**



60-INCH MODEL

**SHA-DM-6033RS** (right seat)

**SHA-DM-6033LS** (left seat)

Rough-In Dimen.

60" wide x 34" deep x 89-3/8" high (w/ 4-1/2" dam)

Finished Dimen.

60" wide x 32-3/4" deep x 89-3/8" high (w/ 4-1/2" dam)

Unit Features



- One - Piece Fiberglass Composite Construction
- Vacuum Formed Acrylic Surface
- 3-3/8" Dia. Center Drain (see reverse side for location)
- Integral Unit Dome (cap)
- Gelcoat Style Mounting Flanges
- Single, Ergonomic Right or Left Hand Seat
- Low Profile Dam (standard)
- Generous, Multi-Level Back Wall Shelving
- Balsa Wood Core Floor Structure

Special Notes

- Optional ABF Model (provides 2-1/2-inches of drain clearance)
- Factory Applied Bar Packages Available
- No-Seat & Dual-Seat Versions Available
- Open Top Versions Available
- Available Only In White (WHT) & Biscuit (BSC) Colors

# ACRYLLUS SERIES SHOWER STALL

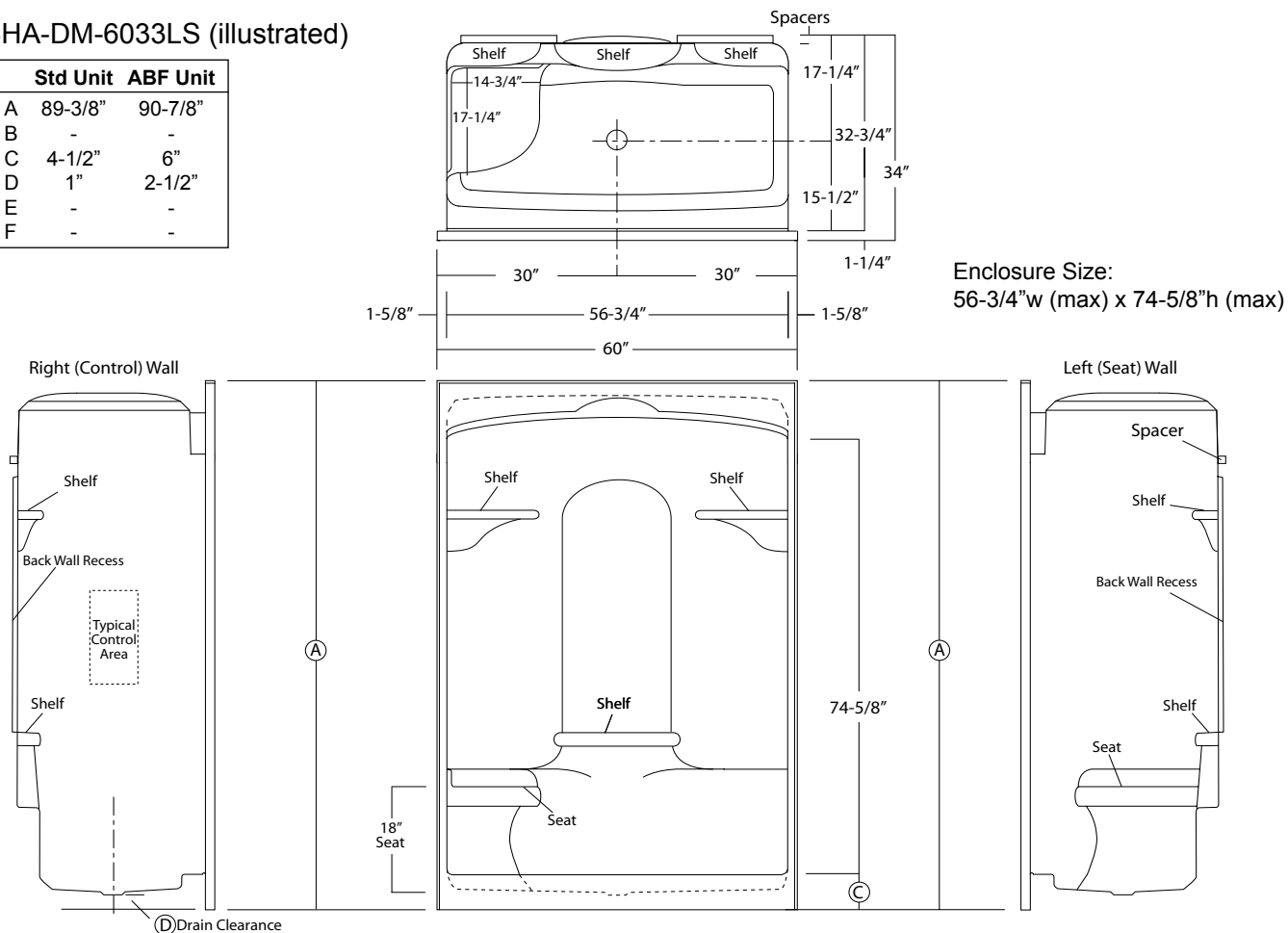
**Order No.: SHA-DM-6033RS (RH seat / 4-1/2" dam)**  
**SHA-DM-6033LS (LH seat / 4-1/2" dam)**

**SHA-DM-6033RS ABF (RH seat / 6" dam)**  
**SHA-DM-6033LS ABF (LH seat / 6" dam)**

60" x 32-3/4", one-piece vacuum formed acrylic shower stall with integral unit cap, right or left hand countoured seat, multi-level back wall shelving, gelcoat style mounting flanges, 4-1/2" low profile dam (1" drain clearance), wall surround, and center drain.

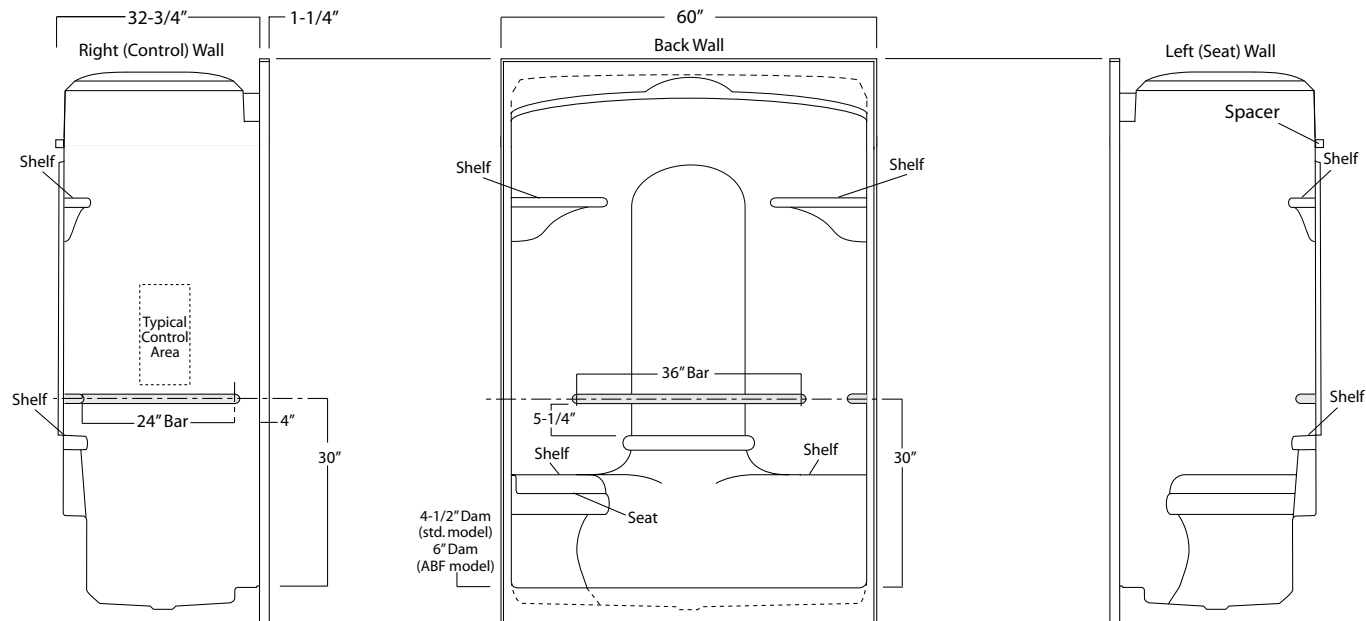
SHA-DM-6033LS (illustrated)

	<b>Std Unit</b>	<b>ABF Unit</b>
A	89-3/8"	90-7/8"
B	-	-
C	4-1/2"	6"
D	1"	2-1/2"
E	-	-
F	-	-



**Package Order No.:** BP1-60 (2-bar only package)  
**Upgrade Package No.:** BP1-60 WHT (1-1/4" dia., white powder coat, 2-bar only package)  
 BP1-60 SNK (1-1/4" dia., satin nickel, 2-bar only package)

Package Includes: Factory installed, 1-1/2" dia. stainless steel, 2-bar package with basic reinforcement for components (LS shown).  
 NOTE: Positioning of factory installed components allow for the installation of a shower enclosure.



**Package Order No.:** BP2-60 (3-bar only package)  
**Upgrade Package No.:** BP2-60 WHT (1-1/4" dia., white powder coat, 3-bar only package)  
 BP2-60 SNK (1-1/4" dia., satin nickel, 3-bar only package)

Package Includes: Factory installed, 1-1/2" dia. stainless steel, 3-bar package with basic reinforcement for components (LS shown).  
 NOTE: Positioning of factory installed components allow for the installation of a shower enclosure.

