

VURSA *kd* SERIES SHOWER STALL

Oasis

SH4P-6032R-LS / BP1-60 shown



MULTI-PIECE MODEL

SH4P-6032 (4-piece / end drain / single seat)

Rough-In Dimensions

60" wide x 33-1/4" deep x 76-1/4" high (w/ 4-inch dam)

Finished Dimensions

60" wide x 32" deep x 75" high (w/ 4-inch dam)

Unit Features



- Four - Piece Fiberglass Composite Construction
- Sanitary Grade Polyester Gelcoat Surface
- Front-Side Installation With Minimal Sealant Requirements
- 3-3/8" Dia. End Drain
- Anti-Drip Front Dam Ledge
- Generous, Multi-Level Back Wall Shelving
- Single, Ergonomic Right or Left Hand Seat
- Ergonomic Corner Foot Rest For Shaving
- Wall Design Accommodates Grab Bar Applications
- Textured Floor Pattern
- 1/2-inch Balsa Wood Core Floor Structure

Special Notes

- Optional ABF Model (provides 3-inches of drain clearance)
- 'QwikClic' Technology
- Factory Applied Reinforcement Available
- Factory Applied Bar Packages Available

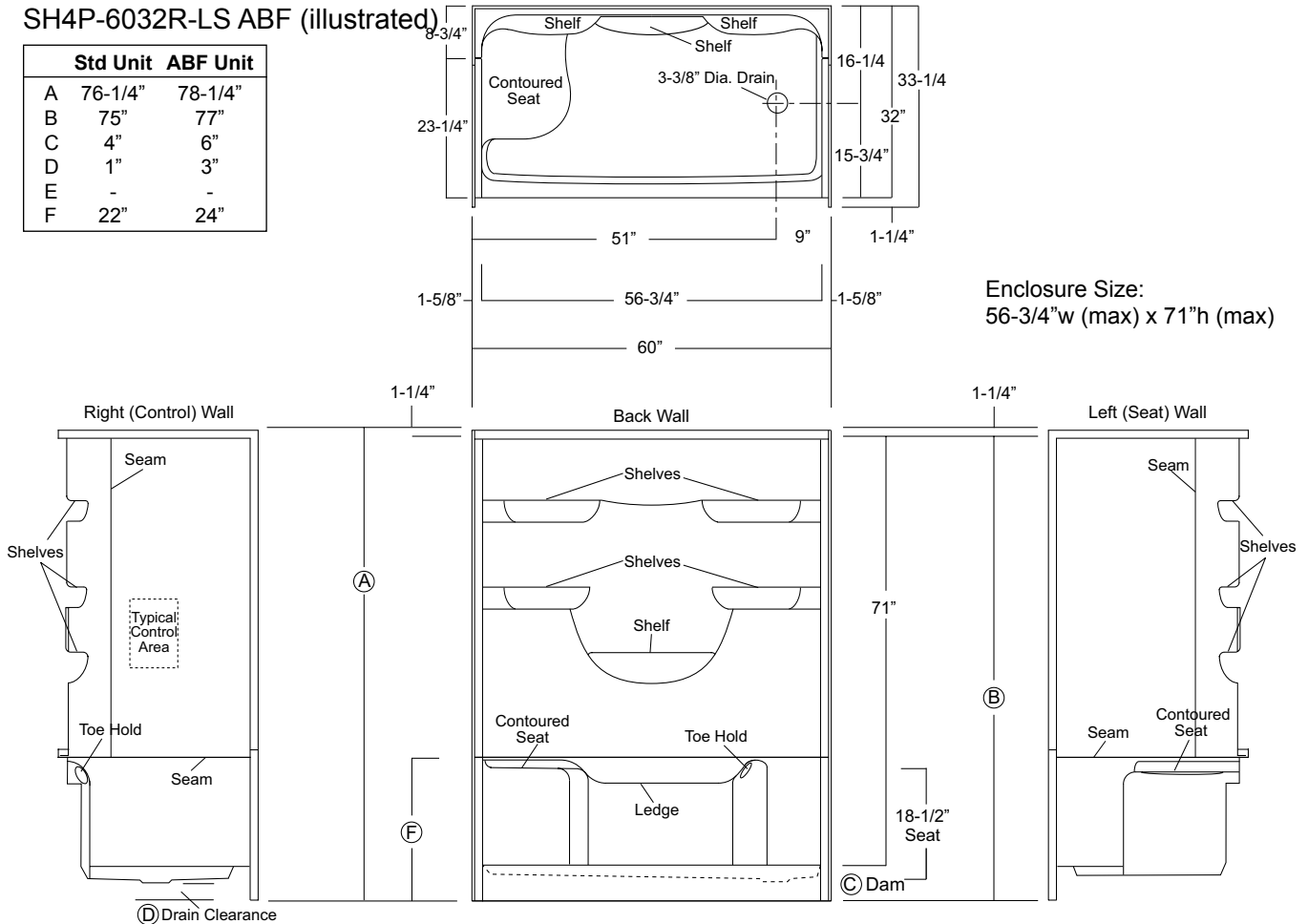
Order No.: SH4P-6032R-LS (RH drain-LH seat / 4" dam)
SH4P-6032L-RS (LH drain-RH seat / 4" dam)

Order No.: SH4P-6032R-LS ABF (RH drain-LH seat / 6" dam)
SH4P-6032L-RS ABF (LH drain-RH seat / 6" dam)

60" x 32", 4-piece gelcoated fiberglass shower with 'QuikClic', front installation, 4" low profile dam (1" drain clearance)
multi-level back wall shelves, integrated toe hold/shaving rest, molded end seat, and drain on end indicated.

SH4P-6032R-LS ABF (illustrated)

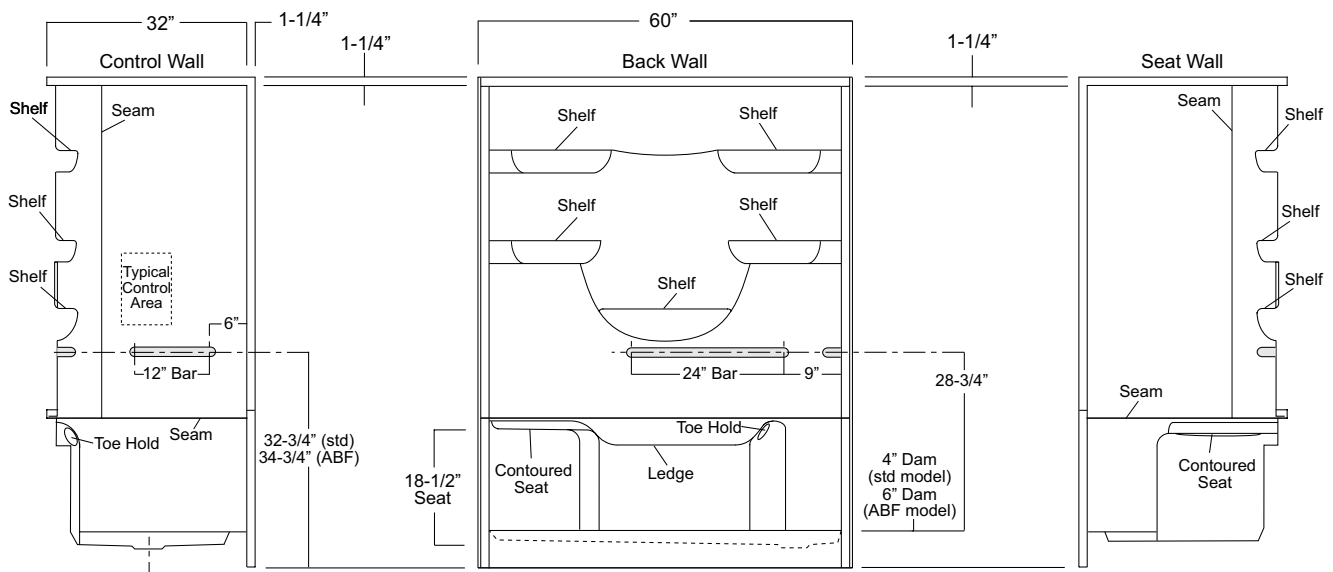
	Std Unit	ABF Unit
A	76-1/4"	78-1/4"
B	75"	77"
C	4"	6"
D	1"	3"
E	-	-
F	22"	24"



NOTE: Factory installed stainless steel shower curtain rod available.



Package Includes: Factory installed, 1-1/2" dia. stainless steel, 2-bar package with basic reinforcement for components (as shown).
NOTE: Positioning of factory installed components allow for the installation of a shower enclosure.



Package Order No.: BP2-60 (3-bar only package)
 Upgrade Package No.: BP2-60 WHT (1-1/4" dia., white powder coat, 3-bar only package)
 BP2-60 SNK (1-1/4" dia., satin nickel, 3-bar only package)

Package Includes: Factory installed, 1-1/2" dia. stainless steel, 3-bar package with basic reinforcement for components (as shown).
 NOTE: Positioning of factory installed components allow for the installation of a shower enclosure

