

Oasis 4-Piece, 60-inch Shower Compartment With Center Drain and ActivLife (HUD/FHA Fair Housing Act Design Manual) Reinforcement Package



Specification – Oasis 4-piece FRP gelcoat shower compartment SH4P-6032, center drain shower, offered in a standard 4-inch or 6-inch (ABF) dam configuration. ActivLife package includes factory-applied reinforcement, in compliance with HUD/FHA Fair Housing Act Design Manual for 2-horizontal bars on back wall and a single horizontal and vertical bar on each side wall.

Standards Certification:

The shower compartment listed is manufactured in compliance with ANSI Z124 Standards, and certified through an ongoing, independent quality assurance and testing program.

Oasis

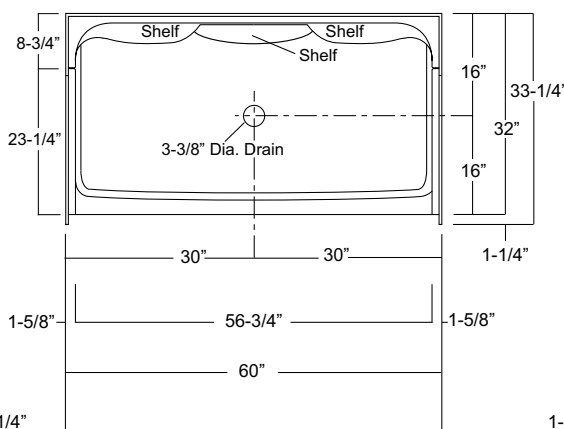
SH4P-6032 / FH
(Fair Housing reinforced)
Model & Package Illustrated

	Std Unit	ABF Unit
A	76-3/4"	78-3/4"
B	75-1/2"	77-1/2"
C	4"	6"
D	1"	3"
E	-	-
F	22"	24"

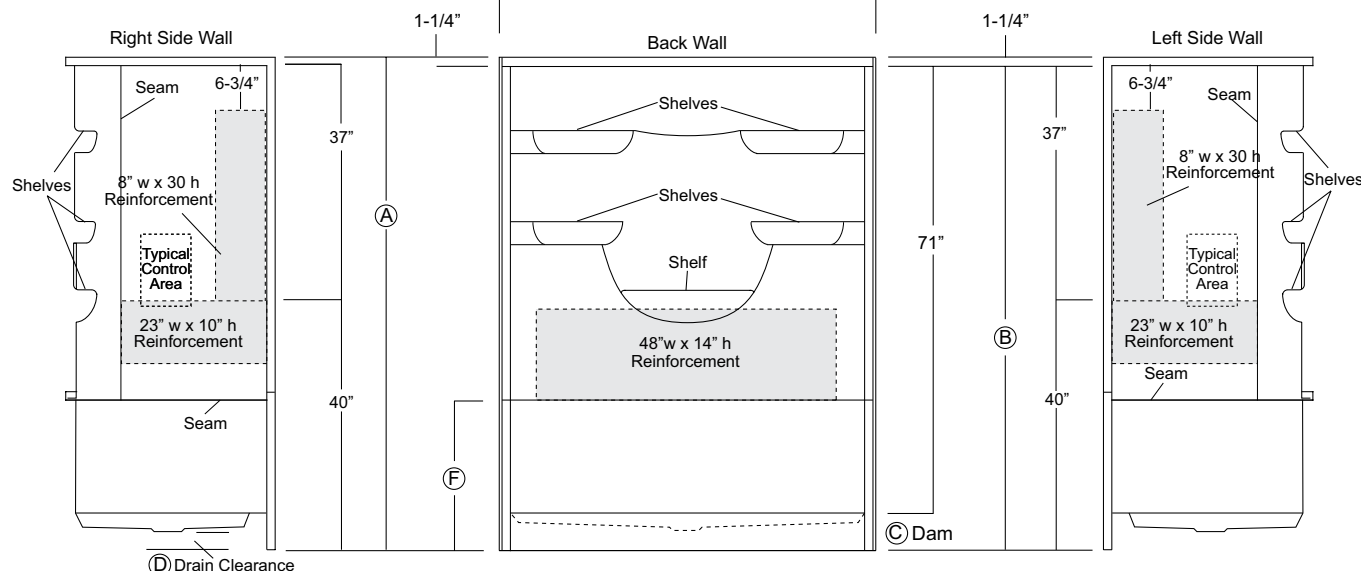


Home Innovation
LAB CERTIFIED™

ActivLife
solutions

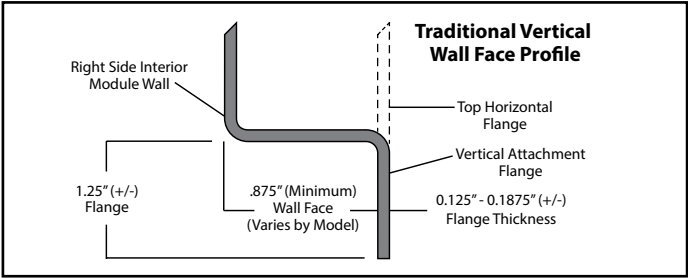


Enclosure Size:
56-3/4"w (max) x 71-1/2"h (max)



Dimensions shown are maximum. Due to the nature of the materials involved, actual unit dimensions can vary (tolerances: + / - 1/8 inch).
Oasis reserves the right to modify or discontinue product and/or associated equipment without prior written or verbal notification or obligation.

Model ID	Package Code	Description
SH4P-6032 (Std or ABF)	/ FH	60" x 32", 4-piece, center drain shower with 4" (std) or 6" (ABF) dam and ActivLife bars only reinforcement on back wall and both end walls.



Available Factory Installed Packages (model available without any component or reinforcement packages)

- Component Packages:**
- BP1-60 & BP2-60 package codes: 2-wall, 2-bar or 3-bar packages
- Reinforced ONLY Packages:**
- FH package code: reinforcement for vertical & horizontal bars, based on HUD/FHA-Fair Housing