

Oasis 48-inch Shower Compartment With Integral Molded Seat and ActivLife (HUD/FHA Fair Housing Act Design Manual) Reinforcement Package

48-inch / Private Access / Reinforced Only



Specification – Oasis one-piece FRP gelcoat shower compartment SH-4836 RS or LS, having a single contoured seat and offered in a standard 4-inch or 6-inch (ABF) dam configuration. ActivLife package includes a factory-applied reinforcement only package, in compliance with HUD/FHA Fair Housing Act Design Manual, shall include back wall and control wall reinforcement, for horizontal bar application.

Standards Certification:

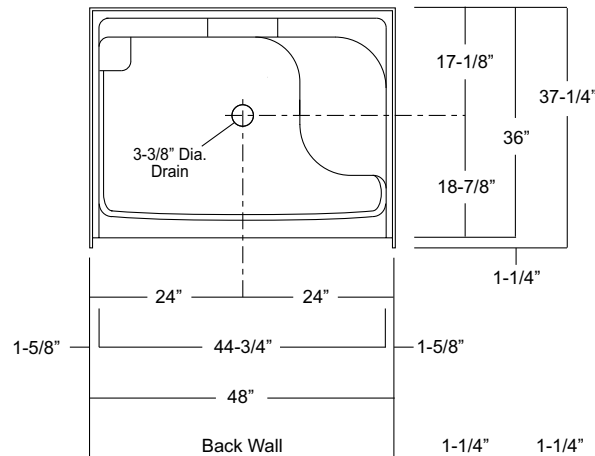
The shower compartment listed is manufactured in compliance with ANSI Z124 Standards, and certified through an ongoing, independent quality assurance and testing program.



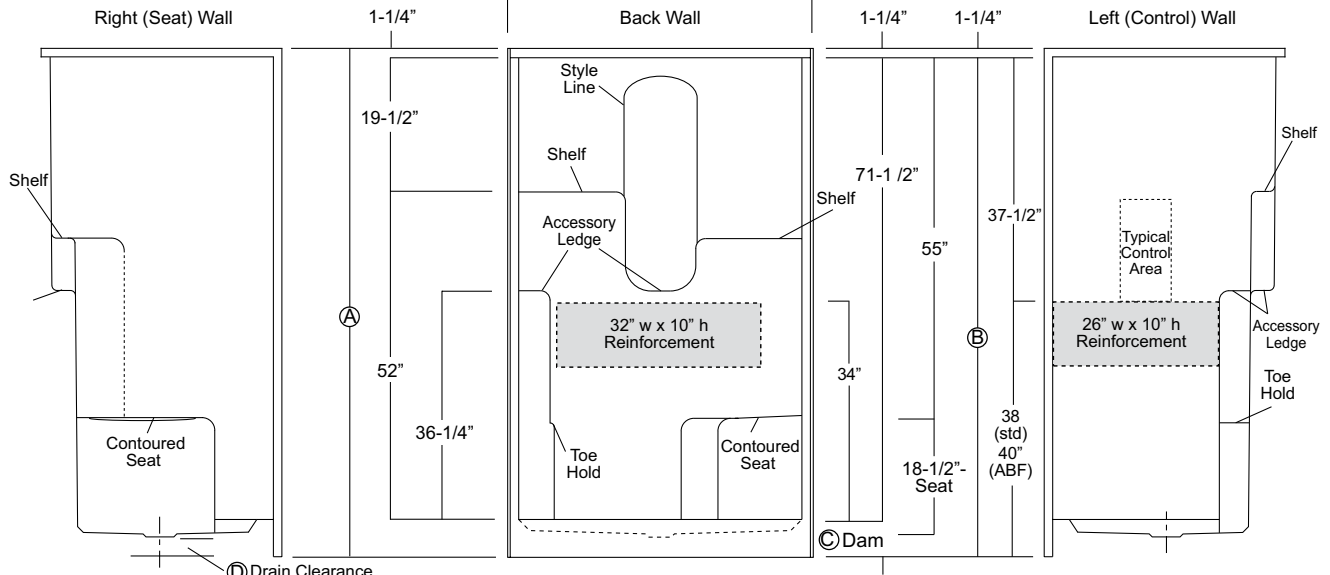
SH-4836 RS / FH
(RH seat / Fair Housing reinforced)
Model & Package Illustrated



	Std Unit	ABF Unit
A	76-3/4"	78-3/4"
B	75-1/2"	77-1/2"
C	4"	6"
D	1"	3"
E	-	-
F	-	-



Enclosure Size:
44-3/4" w (max) x 71-1/2" h (max)



Dimensions shown are maximum. Due to the nature of the materials involved, actual unit dimensions can vary (tolerances: + / - 1/8 inch). Oasis reserves the right to modify or discontinue product and/or associated equipment without prior written or verbal notification or obligation.

Model ID	Package Code	Description (define configuration referencing seat side)
SH-4836 RS (right seat)(Std or ABF) / FH		48" x 36", center drain shower with single contoured seat, and ActivLife control and back wall reinforcement for horizontal bar application.
SH-4836 LS (left seat)(Std or ABF) / FH		

Available Factory Installed Packages (model available without any component or reinforcement packages)

Component Packages:

1. BP1-60 & BP2-60 package codes: 2-wall, 2-bar or 3-bar packages

Reinforced ONLY Packages:

2. FH package code: reinforcement for a single vertical & horizontal bars, based on HUD/FHA-Fair Housing
3. 3SM & 3SF package codes: expanded reinforcement packages, (with or without package components)

