

# Oasis 48-inch Shower Compartment With Integral Molded Seat and ActivLife 3-Wall Full Reinforcement Wrap Package



**Specification** – Oasis one-piece FRP gelcoat shower compartment SH-4836 RS or LS, having a single contoured seat and offered in a standard 4-inch or 6-inch (ABF) dam configuration. ActivLife package includes factory applied, 3-wall, full-wrap reinforcement, exceeding (HUD/FHA) 'Fair Housing' requirements.

**Standards Certification:**

The shower compartment listed is manufactured in compliance with ANSI Z124 Standards, and certified through an ongoing, independent quality assurance and testing program.

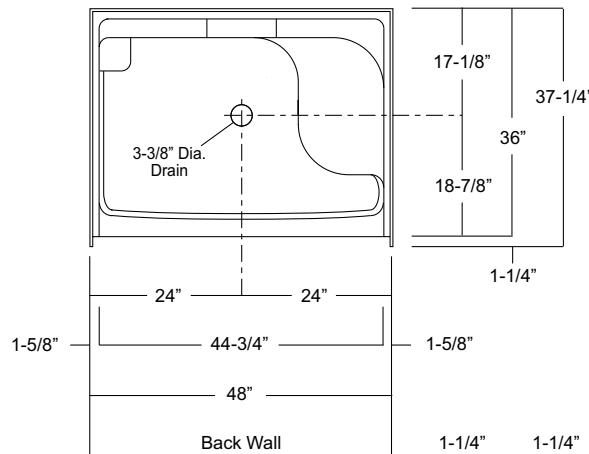
48-inch / Private Access / Reinforced Only



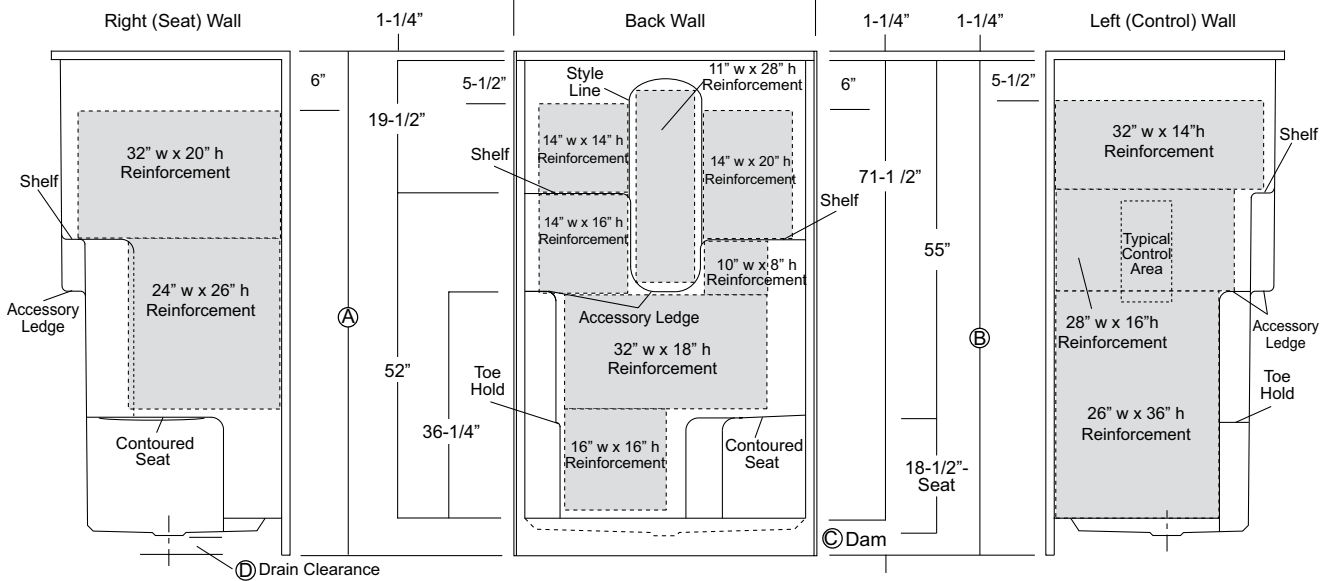
**SH-4836 RS / 3SF**  
(RH seat / full reinforcement wrap)  
Model & Package Illustrated



	Std Unit	ABF Unit
A	76-3/4"	78-3/4"
B	75-1/2"	77-1/2"
C	4"	6"
D	1"	3"
E	-	-
F	-	-



Enclosure Size:  
44-3/4"w (max) x 71-1/2"h (max)



Dimensions shown are maximum. Due to the nature of the materials involved, actual unit dimensions can vary (tolerances: + / - 1/8 inch). Oasis reserves the right to modify or discontinue product and/or associated equipment without prior written or verbal notification or obligation.

**Model ID****Package Code Description (define configuration referencing seat side)**

SH-4836 RS (right seat)(Std or ABF) / 3SF  
 SH-4836 LS (left seat)(Std or ABF) / 3SF

48" x 36", center drain shower with single contoured seat, 4" (std) or 6" (ABF) dam, and  
 ActivLife 3-wall full reinforcement wrap package.

**Available Factory Installed Packages (model available without any component or reinforcement packages)****Component Packages:**

1. BP1-60 & BP2-60 package codes: 2-wall, 2-bar or 3-bar packages

**Reinforced ONLY Packages:**

2. FH package code: reinforcement for a single vertical & horizontal bars, based on HUD/FHA-Fair Housing
3. 3SM & 3SF package codes: expanded reinforcement packages, (with or without package components)

