

**VURSA kd SERIES  
SHOWER STALL**

Patent No.: US 8,918,927 B1

**Oasis**

SH3P-MD-6032R / TL-LS package shown



MULTI-PIECE MODEL

**SH3P-MD-6032** (3-pc / end drain / minimal dam)

Rough-In Dimensions

60" wide x 33-1/4" deep x 78-3/4" high

Finished Dimensions

60" wide x 32" deep x 77-1/2" high

Unit Features

- Three - Piece Fiberglass Composite Construction
- Sanitary Grade Polyester Gelcoat Surface
- Front-Side Installation With Minimal Sealant Requirements
- 3-3/8" Dia. End Drain
- Contoured Threshold Aids In Keeping Water Within Confines of Unit
- Contoured Threshold Aids Entry And Exit
- Corner Accessory Ledge
- Generous, Multi-Level Back Wall Shelving
- Wall Design Accommodates Grab Bar Applications
- 1" Floor Flange To Secure Unit Along Threshold
- Textured Floor Pattern
- Balsa Wood Core Floor Structure



**Home Innovation**  
LAB CERTIFIED™

Special Notes

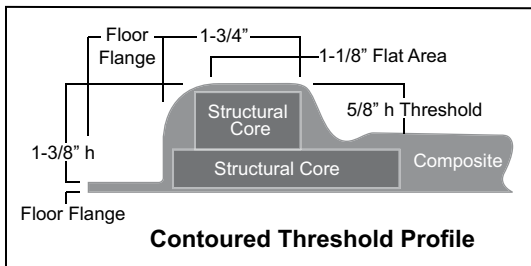
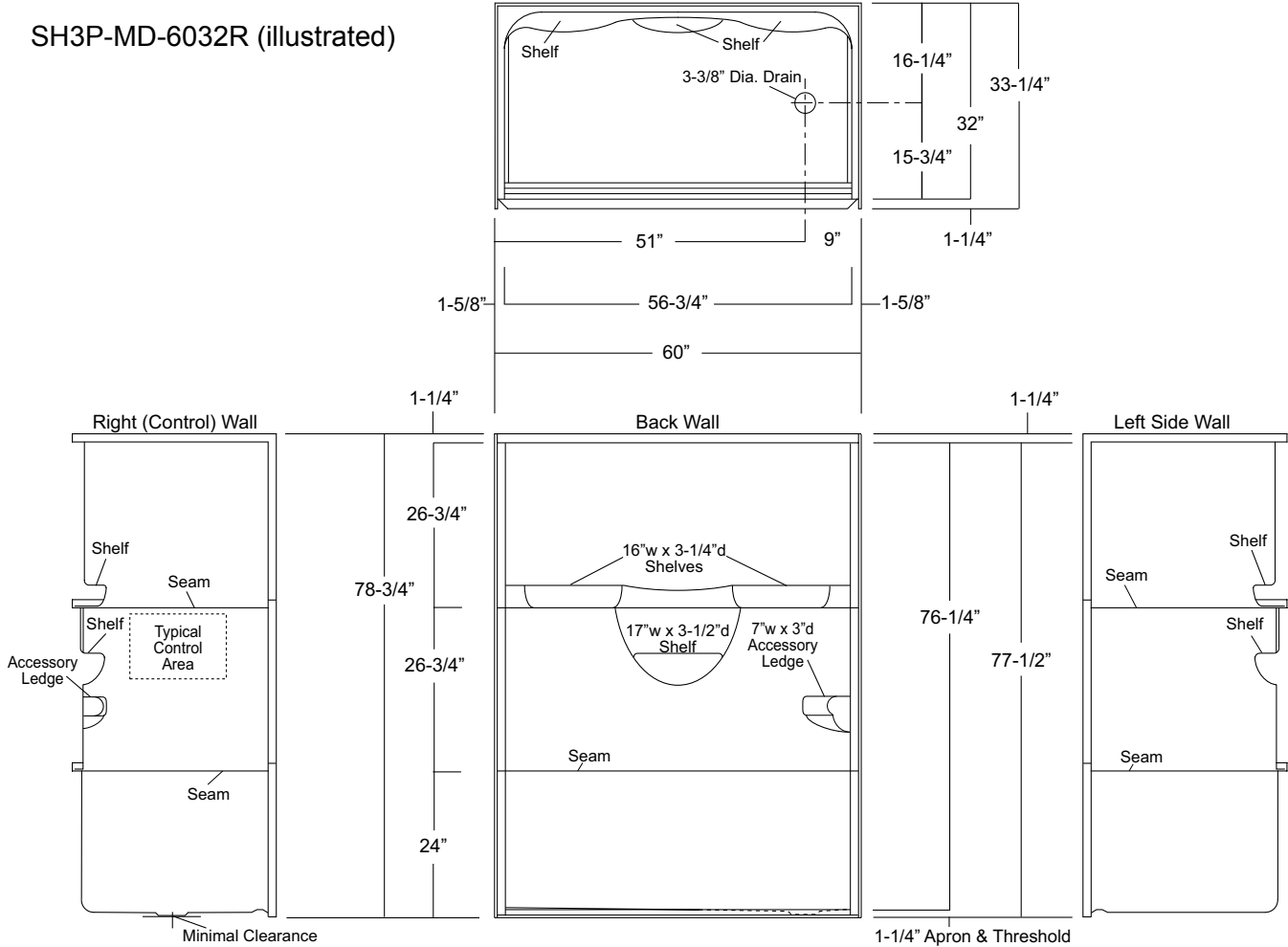
- 'QwikClic' Technology (Patents Pending)
- Factory Applied Reinforcement Packages Available
- Factory Applied Bar & Seat Packages Available

**Order No.: SH3P-MD-6032R (RH drain-Minimal Dam)**  
**SH3P-MD-6032L (LH drain-Minimal Dam)**

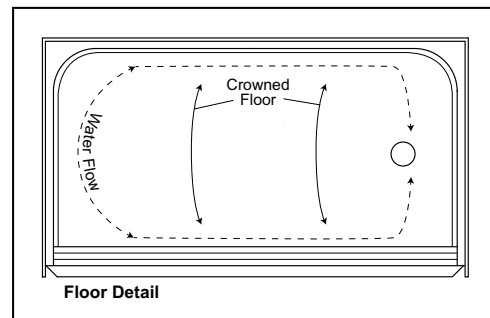
60" x 32", 3-piece gelcoated fiberglass shower with 'QuikClic', front side installation, multi-level back wall shelves, corner accessory ledge, minimal dam for barrier-free entry, and drain on end indicated.

NOTE: This model DOES NOT meet the required interior dimensions for ADA Roll-In Shower compliance.

SH3P-MD-6032R (illustrated)



Enclosure Size: 56-3/4" w (max) x 76-1/4" h (max)

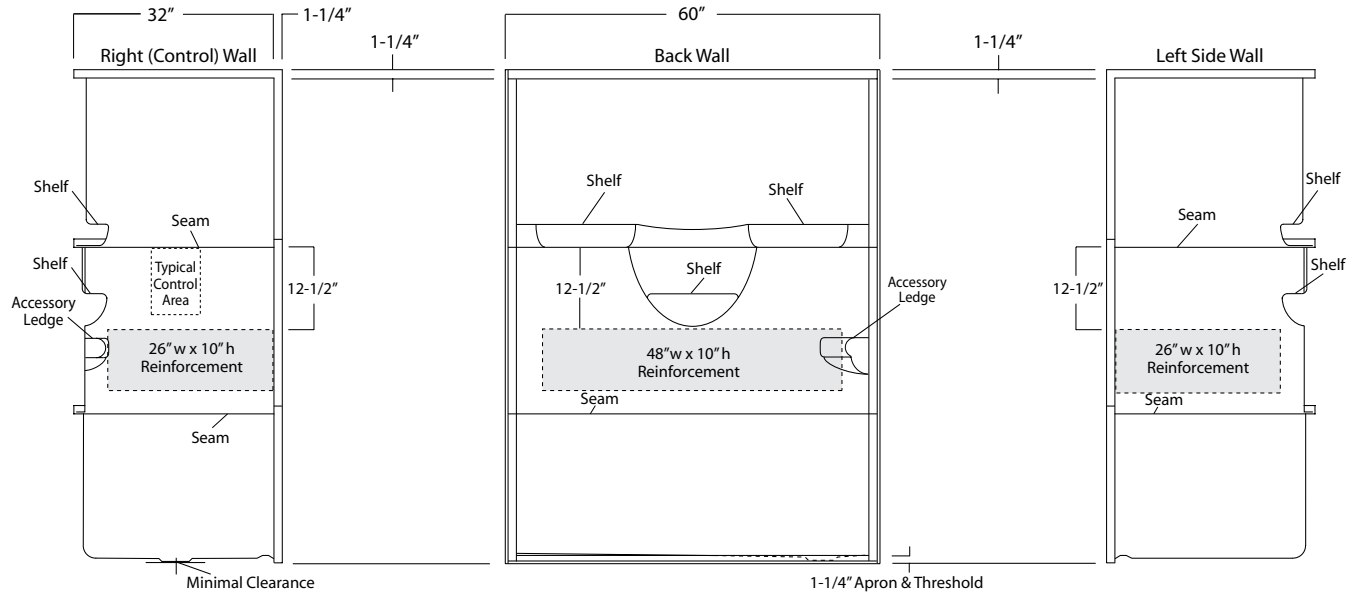


**NOTE:** Due to narrow threshold size and ramped configuration, care must be used in selecting an enclosure.

**Package Order No.: FH (Fair Housing wall reinforcement)**

Package Includes: Factory applied, HUD-FHA compliant (Fair Housing), structurally reinforced wall areas (as shown) for independent field application of bars.

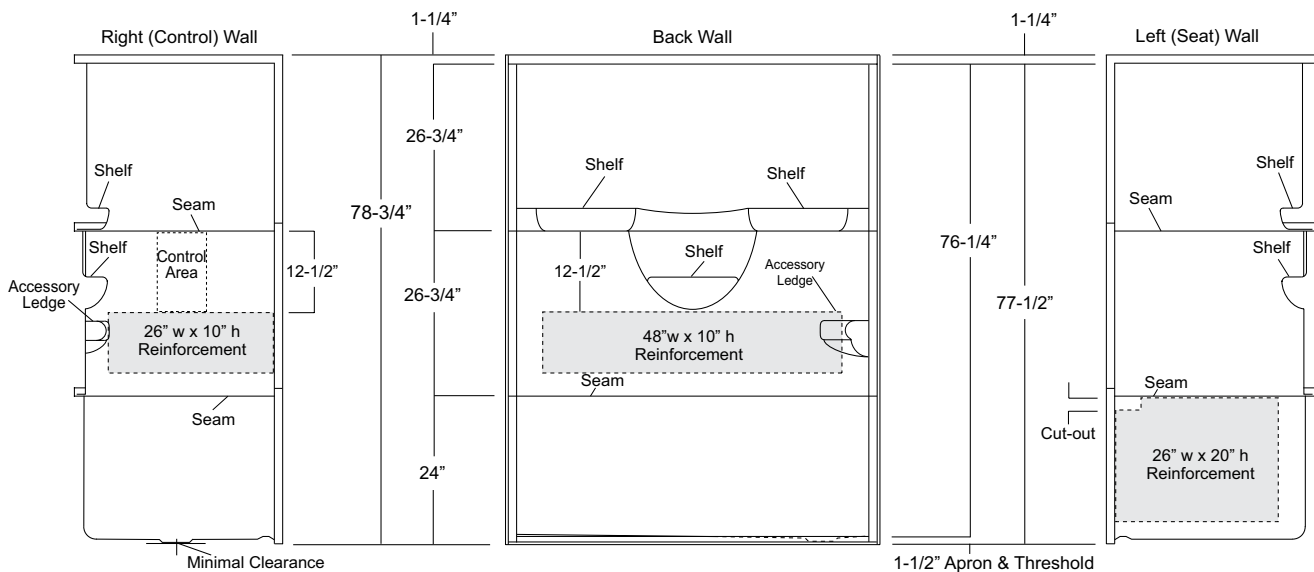
NOTE: Factory installed stainless steel shower curtain rod available.



**Package Order No.: TLRF-LS (RH drain-LH seat reinforcement)  
TLRF-RS (LH drain-RH seat reinforcement)**

Package Includes: Factory applied, 2-wall horizontal bar reinforcement and single-wall seat reinforcement (RS or LS).

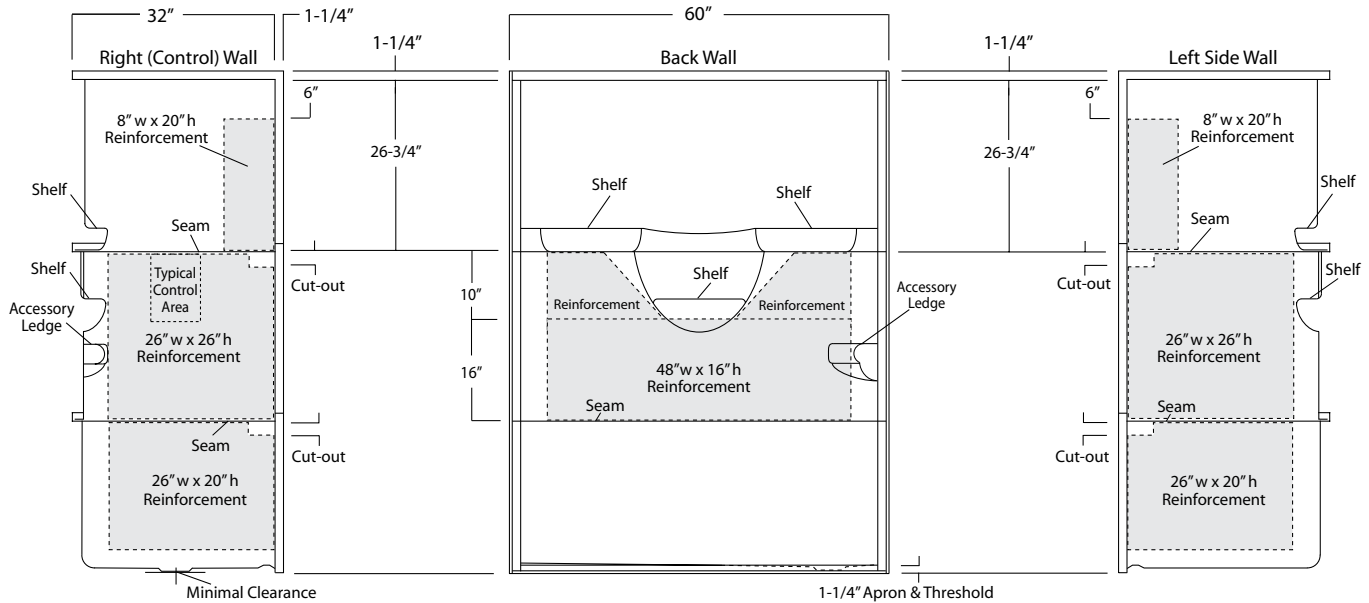
NOTES: "RS or LS" designates seat wall.



**Package Order No.: 3SM (3-side, mid-level wall reinforcement)**

Package Includes: Factory applied, 3-side, mid-level, structurally reinforced wall areas (as shown), exceeding 'Fair Housing' (HUD/FHA) requirements, for independent field application of bars.

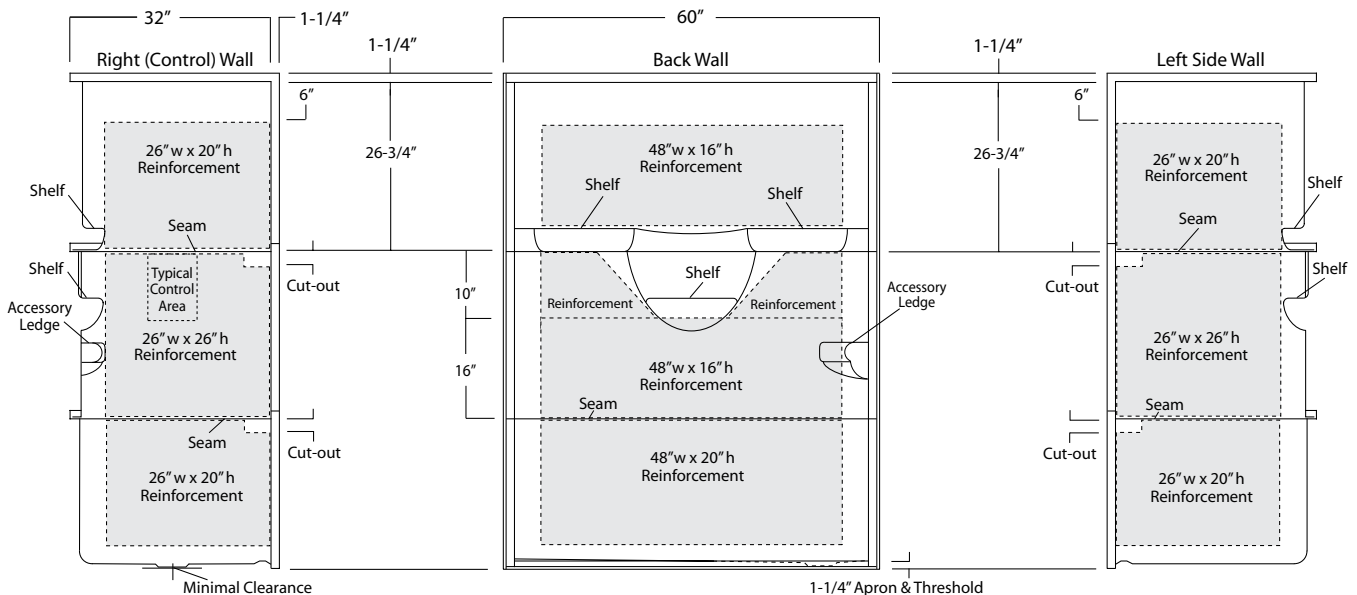
NOTE: Factory installed component packages available with listed reinforcement.



**Package Order No.: 3SF (3-side, full-wall reinforcement)**

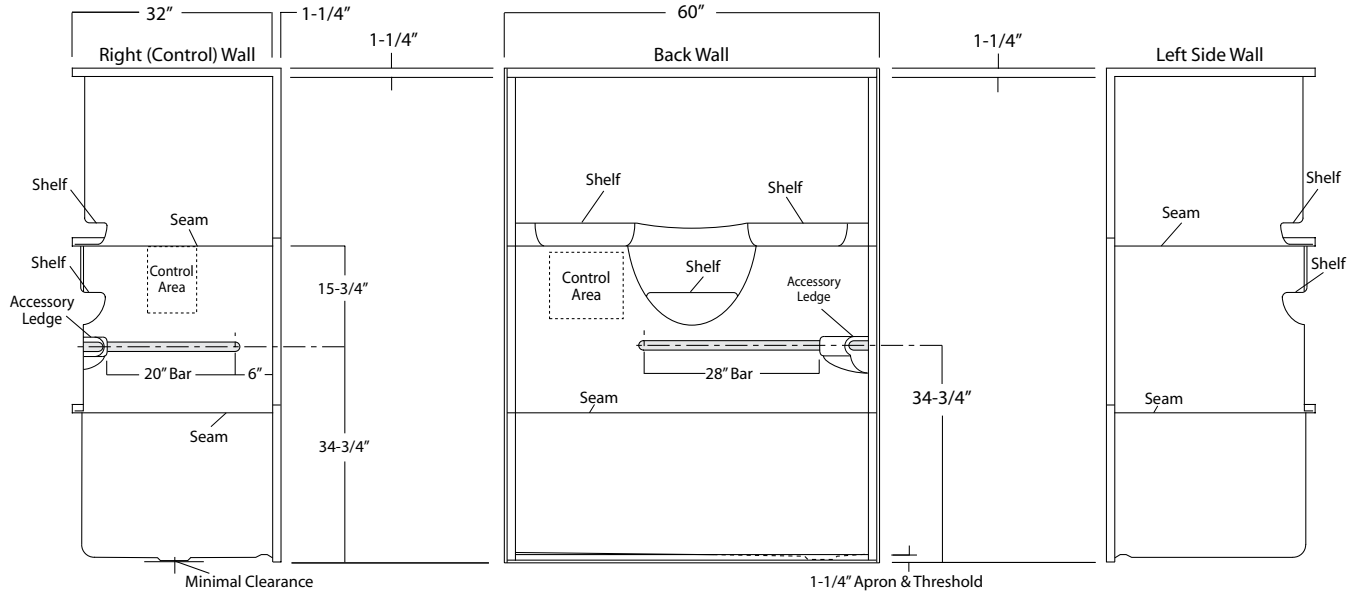
Package Includes: Factory applied, 3-side, full-wrap, structurally reinforced wall areas (as shown), exceeding 'Fair Housing' (HUD/FHA) requirements, for independent field application of bars.

NOTE: Factory installed component packages available with listed reinforcement.



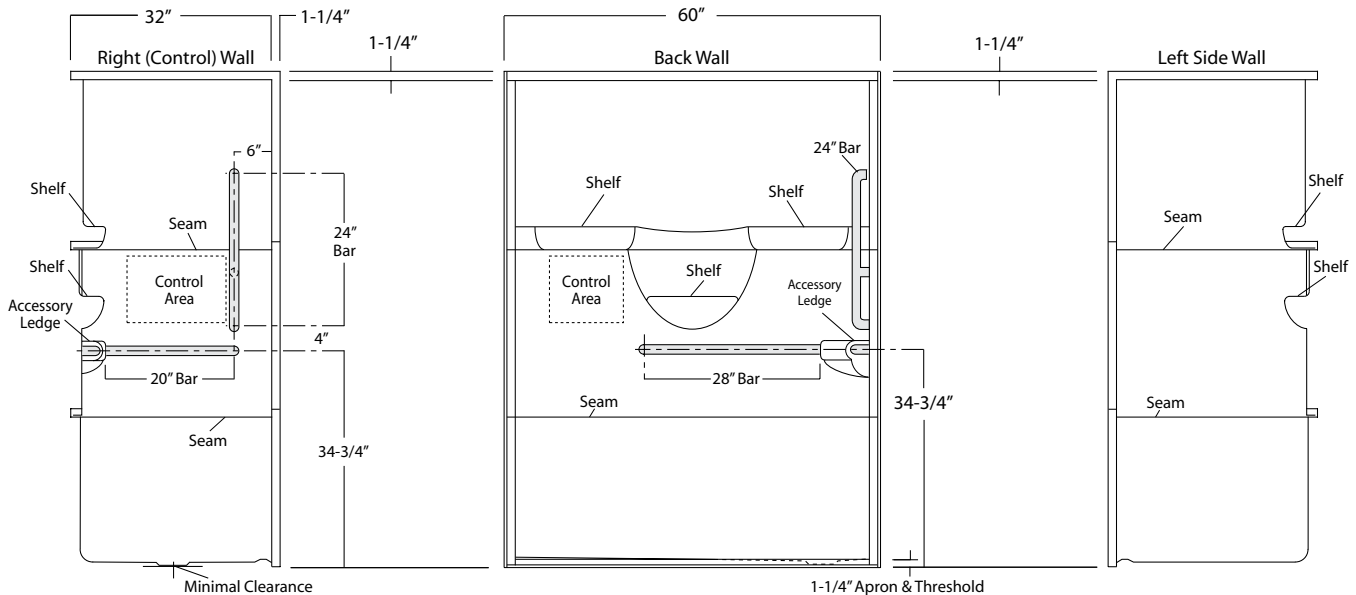
**Package Order No.:** BP1-60 (2-bar only package)  
**Upgrade Package No.:** BP1-60 WHT (1-1/4" dia., white powder coat, 2-bar only package)  
 BP1-60 SNK (1-1/4" dia., satin nickel, 2-bar only package)

Package Includes: Factory installed, 1-1/2" dia. stainless steel, 2-bar package with basic reinforcement for components (as shown).  
 NOTE: Positioning of factory installed components allow for the installation of a shower enclosure.



**Package Order No.:** BP2-60 (3-bar only package)  
**Upgrade Package No.:** BP2-60 WHT (1-1/4" dia., white powder coat, 3-bar only package)  
 BP2-60 SNK (1-1/4" dia., satin nickel, 3-bar only package)

Package Includes: Factory installed, 1-1/2" dia. stainless steel, 3-bar package with basic reinforcement for components (as shown).  
 NOTE: Positioning of factory installed components allow for the installation of a shower enclosure.



**Package Order No.: TL-LS (RH drain-LH seat package)  
TL-RS (LH drain-RH seat package)**

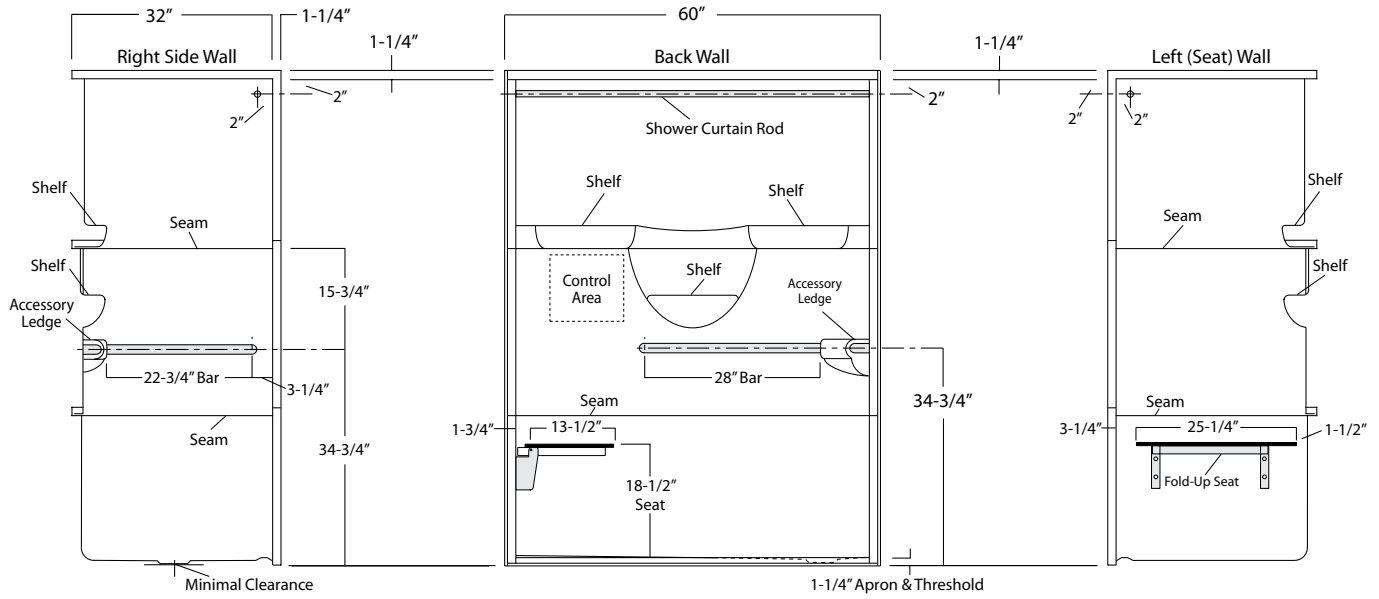
Package Includes: Factory installed, 1-1/2" dia. stainless steel, 2-bar package, 1" dia. shower rod, and side wall folding seat, with basic reinforcement for components (as shown).

NOTES: "RS or LS" designates seat wall.

Shower curtain rod may be deleted upon request.

Positioning of factory installed components prohibit the installation of a shower enclosure.

(10/28/16- rev.seat)



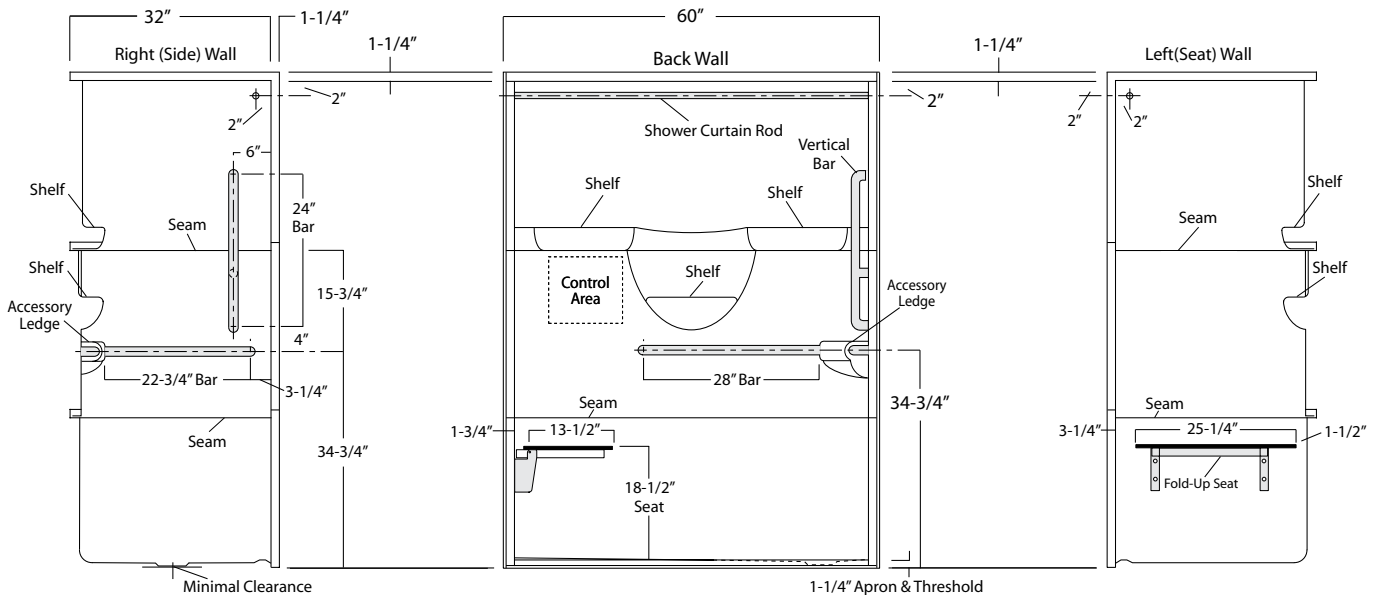
**Package Order No.: TLV-LS (RH drain-LH seat package)  
TLV-RS (LH drain-RH seat package)**

Package Includes: Factory installed, 1-1/2" dia. stainless steel, 3-bar package, 1" dia. shower rod, and side wall folding seat, with basic reinforcement for components (as shown).

NOTES: "RS or LS" designates seat wall.

Shower curtain rod may be deleted upon request.

Positioning of factory installed components prohibit the installation of a shower enclosure.



Photographic images may include optional components and appear different than actual product.  
Dimensions shown are maximum. Due to the nature of the materials involved, actual unit dimensions can vary (tolerances: +/-1/8 inch)  
Oasis reserves the right to modify or discontinue product and/or associated equipment without prior written or verbal notification or obligation.