

VURSA *kd* SERIES SHOWER STALL

Patent No.: US 8,918,927 B1

SH3P-6032L-ABF / TLV-RS shown



MULTI-PIECE MODEL



SH3P-6032 (3-piece / center drain)

Rough-In Dimensions

60" wide x 33-1/4" deep x 76-3/4" high (w/ 4-inch dam)

Finished Dimensions

60" wide x 32" deep x 75-1/2" high (w/ 4-inch dam)

Unit Features



- Three - Piece Fiberglass Composite Construction
- Sanitary Grade Polyester Gelcoat Surface
- Front-Side Installation With Minimal Sealant Requirements
- 3-3/8" Dia. Center Drain
- Anti-Drip Front Dam Ledge
- Corner Accessory Ledge
- Generous, Multi-Level Back Wall Shelving
- Wall Design Accommodates Grab Bar & Seat Applications
- Textured Floor Pattern
- 1/2-inch Balsa Wood Core Floor Structure

Special Notes

- Optional ABF Model (provides 3-inches of drain clearance)
 - 'QwikClic' Technology
 - Factory Applied Reinforcement Packages Available
 - Factory Applied Bar & Seat Packages Available
-

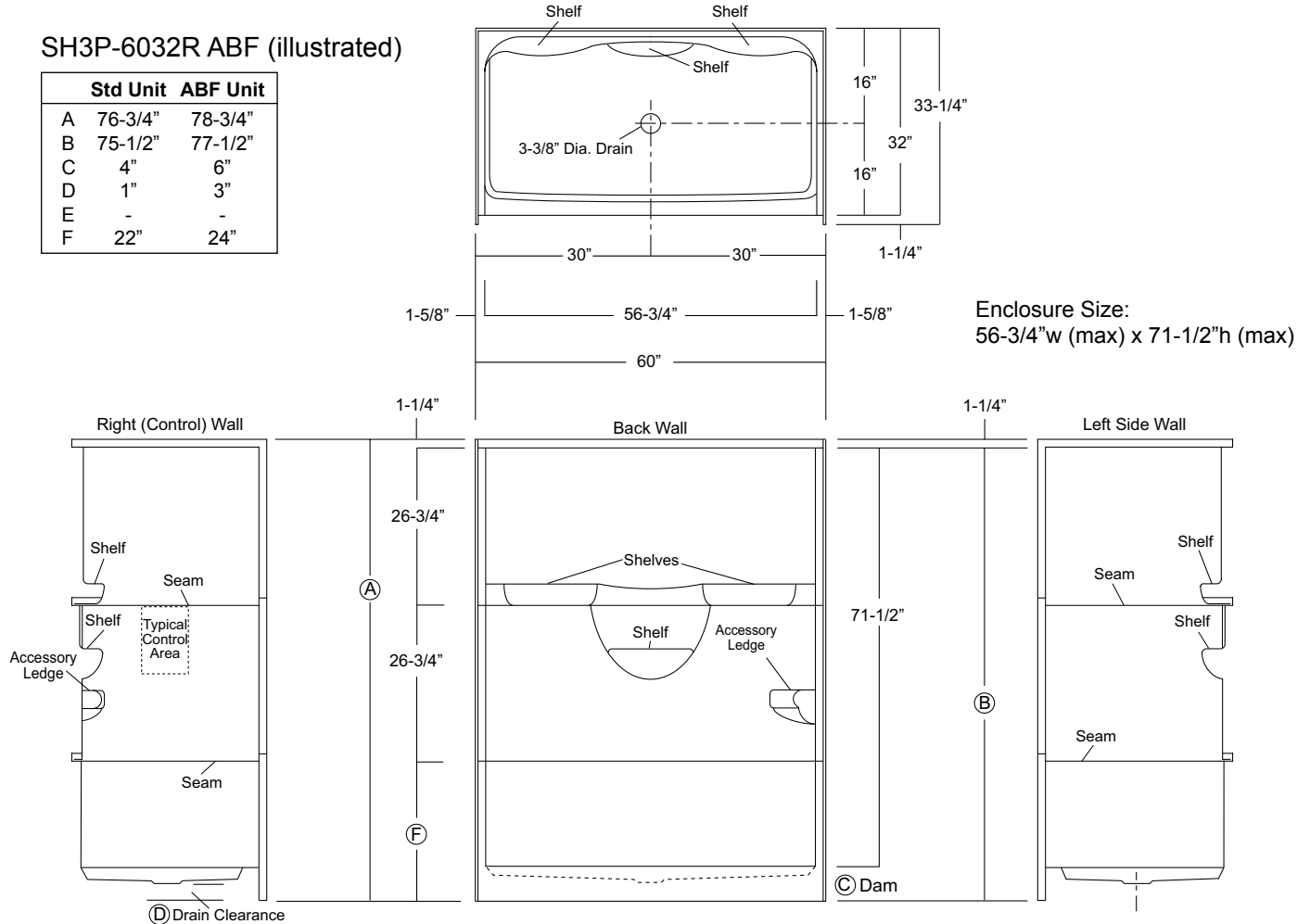
Order No.: SH3P-6032R (center drain / R control wall / 4" dam)
SH3P-6032L (center drain / L control wall / 4" dam)

Order No.: SH3P-6032R ABF (center drain / R control wall / 6" dam)
SH3P-6032L ABF (center drain / L control wall / 6" dam)

60" x 32", 3-piece gelcoated fiberglass shower with 'QuikClic', front side installation, 4" low profile dam (1" drain clearance)
multi-level back wall shelves, RH or LH control wall, and center drain.

SH3P-6032R ABF (illustrated)

	Std Unit	ABF Unit
A	76-3/4"	78-3/4"
B	75-1/2"	77-1/2"
C	4"	6"
D	1"	3"
E	-	-
F	22"	24"

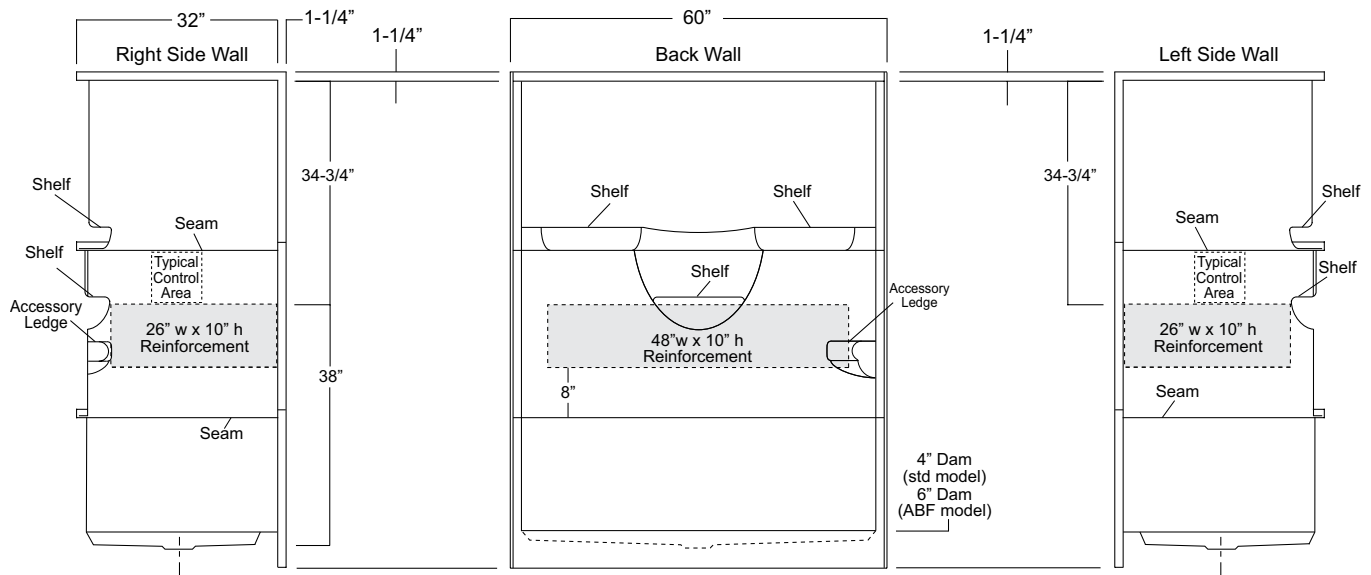


Enclosure Size:
56-3/4"w (max) x 71-1/2"h (max)

Package Order No.: FH (Fair Housing wall reinforcement)

Package Includes: Factory applied, HUD-FHA compliant (Fair Housing), structurally reinforced wall areas (as shown) for independent field application of bars.

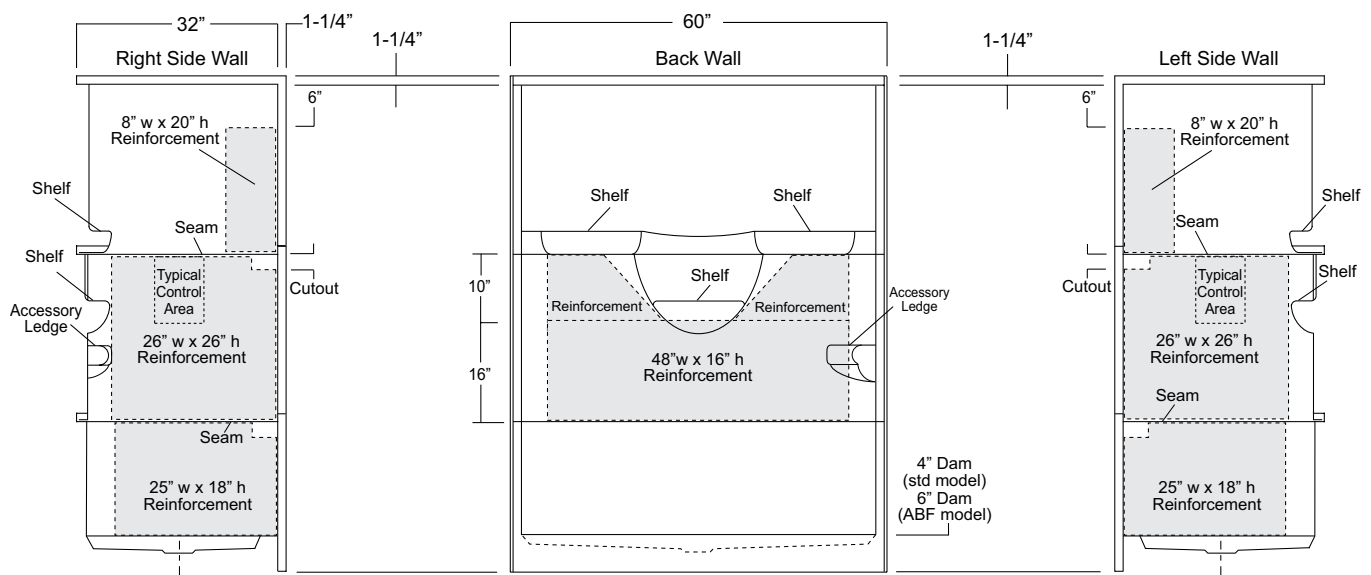
NOTE: Factory installed stainless steel shower curtain rod available.



Package Order No.: 3SM (3-side, mid-level wall reinforcement)

Package Includes: Factory applied, 3-side, mid-level, structurally reinforced wall areas (as shown), exceeding 'Fair Housing' (HUD/FHA) requirements, for independent field application of bars.

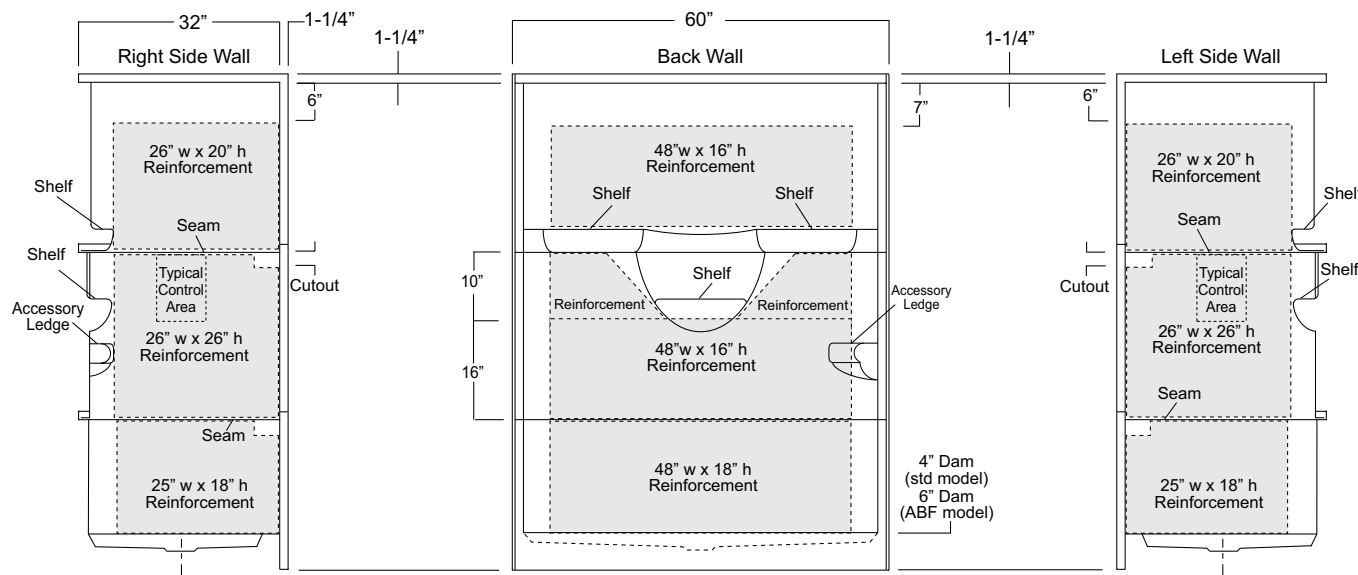
NOTE: Factory installed component packages available with listed reinforcement.



Package Order No.: 3SF (3-side, full-wall reinforcement)

Package Includes: Factory applied, 3-side, full-wrap, structurally reinforced wall areas (as shown), exceeding 'Fair Housing' (HUD/FHA) requirements, for independent field application of bars.

NOTE: Factory installed component packages available with listed reinforcement.



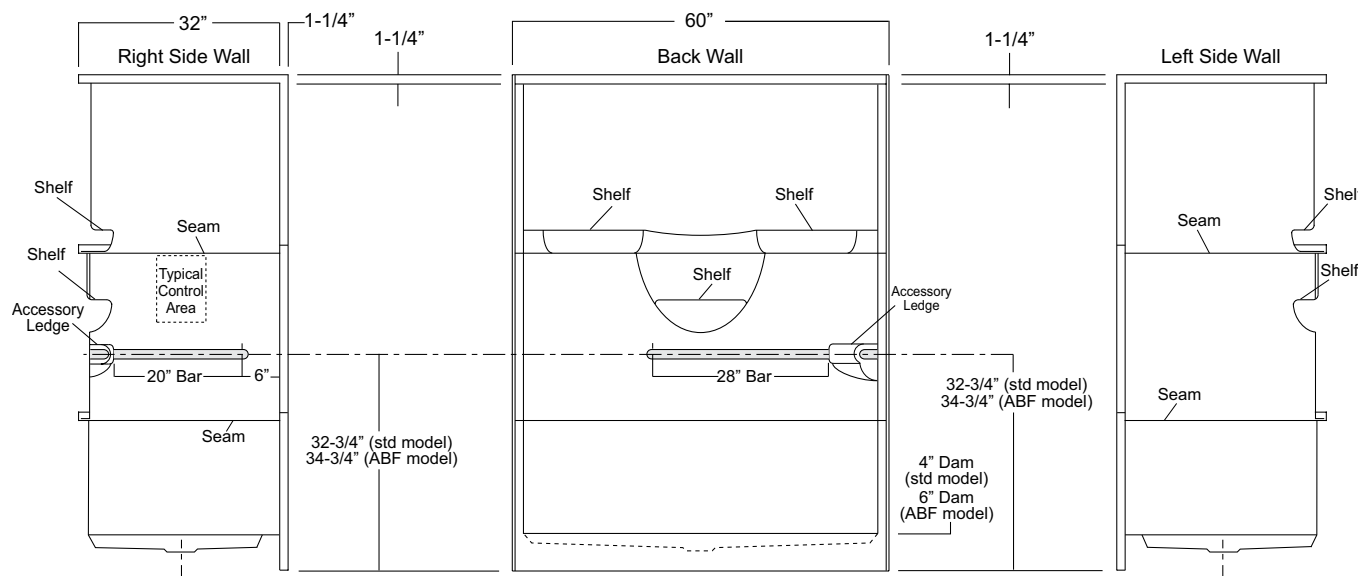
Package Order No.: BP1-60 (2-bar only package)

Upgrade Package No.: BP1-60 WHT (1-1/4" dia., white powder coat, 2-bar only package)

BP1-60 SNK (1-1/4" dia., satin nickel, 2-bar only package)

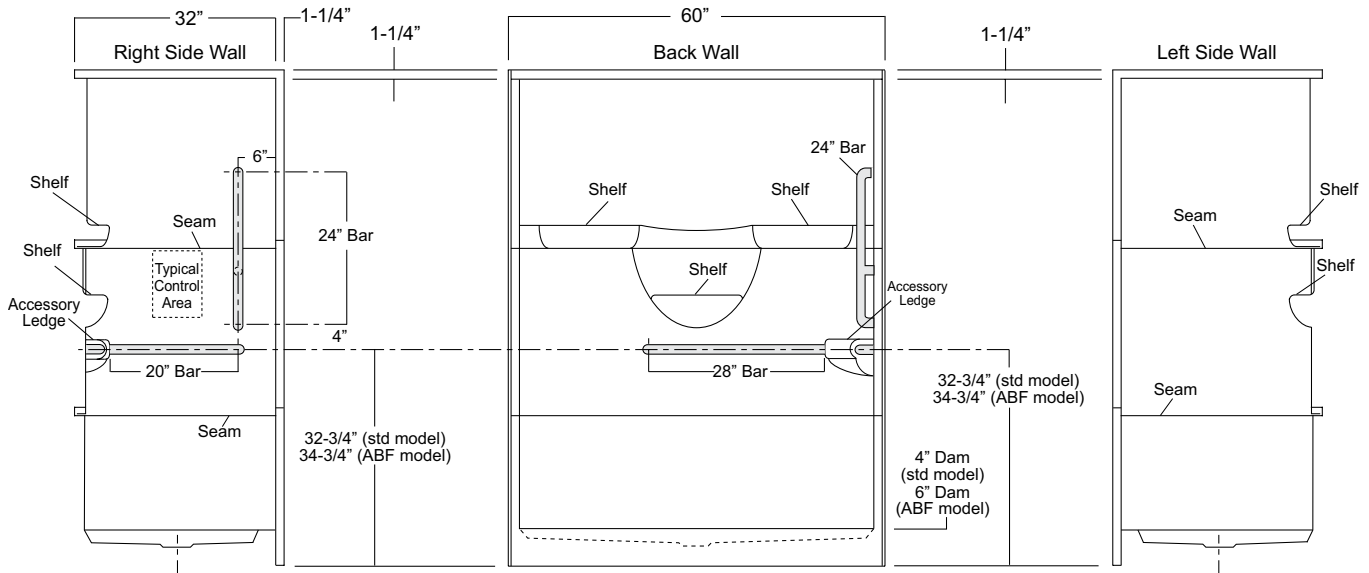
Package Includes: Factory installed, 1-1/2" dia. stainless steel, 2-bar package with basic reinforcement for components (as shown).

NOTE: Positioning of factory installed components allow for the installation of a shower enclosure.



Package Order No.: BP2-60 (3-bar only package)
Upgrade Package No.: BP2-60 WHT (1-1/4" dia., white powder coat, 3-bar only package)
 BP2-60 SNK (1-1/4" dia., satin nickel, 3-bar only package)

Package Includes: Factory installed, 1-1/2" dia. stainless steel, 3-bar package with basic reinforcement for components (as shown).
 NOTE: Positioning of factory installed components allow for the installation of a shower enclosure.



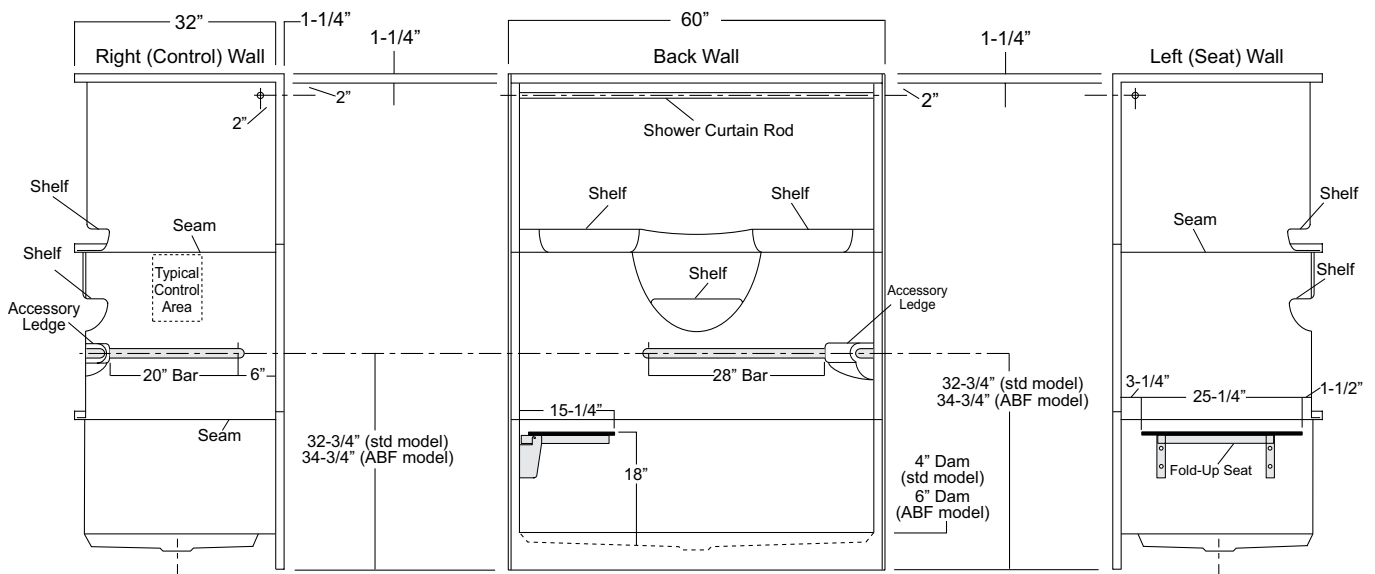
Package Order No.: TL-LS (LH seat package)
 TL-RS (RH seat package)

Package Includes: Factory installed, 1-1/2" dia. stainless steel, 2-bar package, 1" dia. shower rod, and side wall folding seat, with basic reinforcement for components (as shown).

NOTES: "RS or LS" designates seat wall.

Shower curtain rod may be deleted upon request.

Positioning of factory installed components prohibit the installation of a shower enclosure.



**Package Order No.: TLV-LS (LH seat package)
TLV-RS (RH seat package)**

Package Includes: Factory installed, 1-1/2" dia. stainless steel, 3-bar package, 1" dia. shower rod, and side wall folding seat, with basic reinforcement for components (as shown).

NOTES: "RS or LS" designates seat wall.

Shower curtain rod may be deleted upon request.

Positioning of factory installed components prohibit the installation of a shower enclosure.

