

## VURSA *kd* SERIES SHOWER STALL

Patent No.: US 8,918,927 B1

SH3P-6032L-ABF / TLV-RS shown



MULTI-PIECE MODEL



SH3P-6032 (3-piece / center drain)

---

### Rough-In Dimensions

60" wide x 33-1/4" deep x 76-3/4" high (w/ 4-inch dam)

---

### Finished Dimensions

60" wide x 32" deep x 75-1/2" high (w/ 4-inch dam)

---

### Unit Features



- Three - Piece Fiberglass Composite Construction
- Sanitary Grade Polyester Gelcoat Surface
- Front-Side Installation With Minimal Sealant Requirements
- 3-3/8" Dia. Center Drain
- Anti-Drip Front Dam Ledge
- Corner Accessory Ledge
- Generous, Multi-Level Back Wall Shelving
- Wall Design Accommodates Grab Bar & Seat Applications
- Textured Floor Pattern
- 1/2-inch Balsa Wood Core Floor Structure

---

### Special Notes

- Optional ABF Model (provides 3-inches of drain clearance)
  - 'QwikClic' Technology
  - Factory Applied Reinforcement Packages Available
  - Factory Applied Bar & Seat Packages Available
-

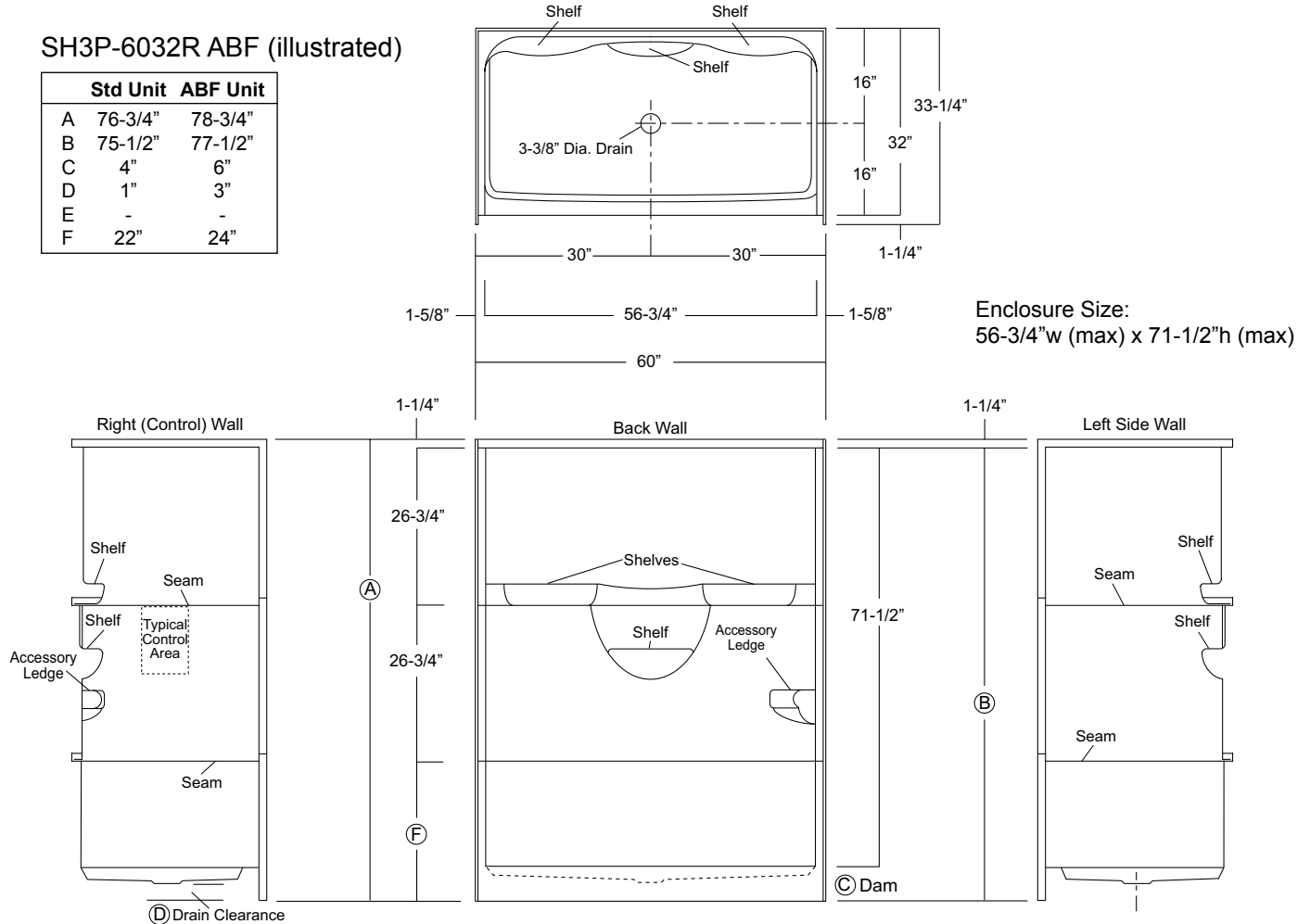
Order No.: SH3P-6032R (center drain / R control wall / 4" dam)  
SH3P-6032L (center drain / L control wall / 4" dam)

Order No.: SH3P-6032R ABF (center drain / R control wall / 6" dam)  
SH3P-6032L ABF (center drain / L control wall / 6" dam)

60" x 32", 3-piece gelcoated fiberglass shower with 'QuikClic', front side installation, 4" low profile dam (1" drain clearance)  
multi-level back wall shelves, RH or LH control wall, and center drain.

SH3P-6032R ABF (illustrated)

|   | Std Unit | ABF Unit |
|---|----------|----------|
| A | 76-3/4"  | 78-3/4"  |
| B | 75-1/2"  | 77-1/2"  |
| C | 4"       | 6"       |
| D | 1"       | 3"       |
| E | -        | -        |
| F | 22"      | 24"      |

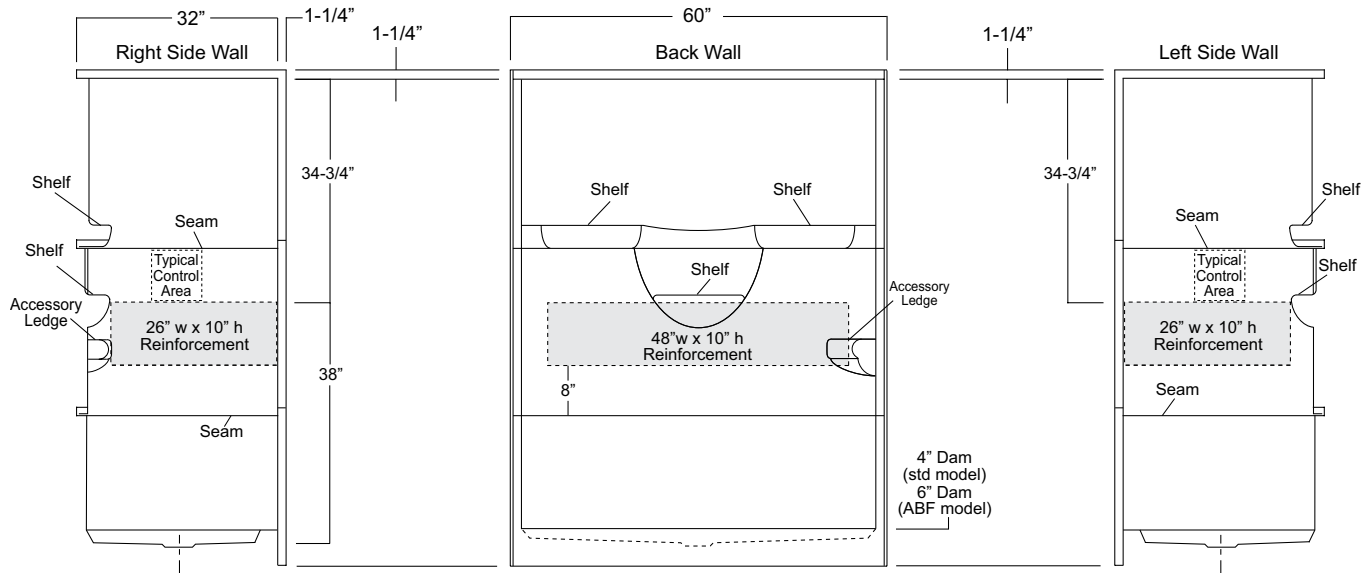


Enclosure Size:  
56-3/4"w (max) x 71-1/2"h (max)

**Package Order No.: FH (Fair Housing wall reinforcement)**

Package Includes: Factory applied, HUD-FHA compliant (Fair Housing), structurally reinforced wall areas (as shown) for independent field application of bars.

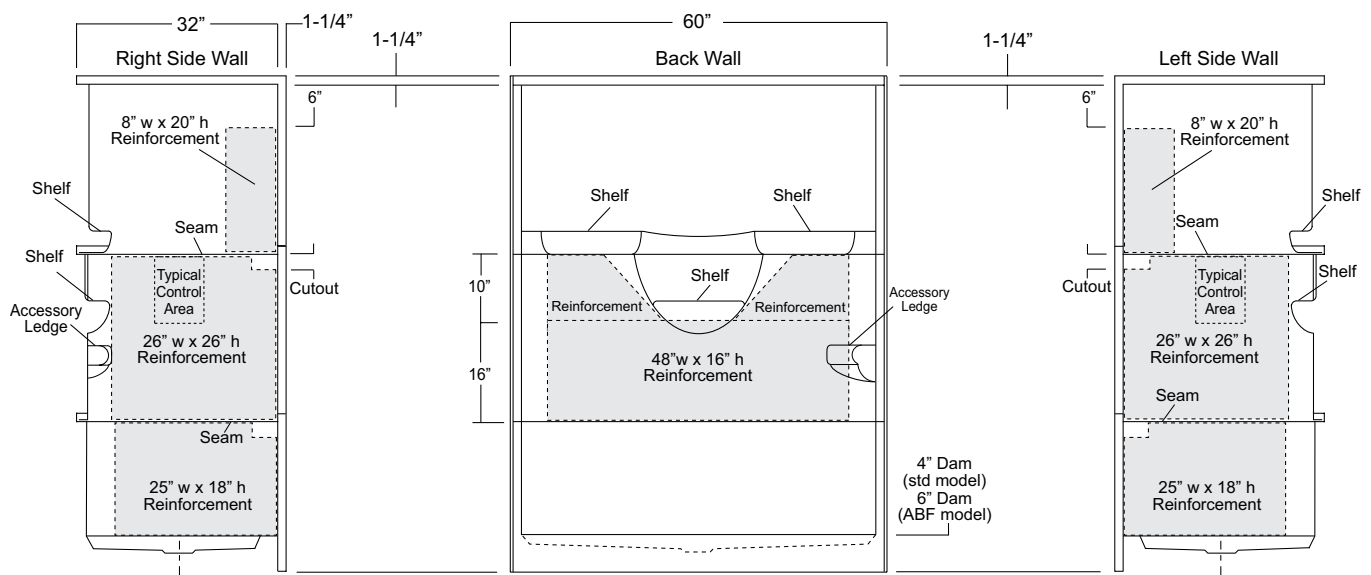
NOTE: Factory installed stainless steel shower curtain rod available.



**Package Order No.: 3SM (3-side, mid-level wall reinforcement)**

Package Includes: Factory applied, 3-side, mid-level, structurally reinforced wall areas (as shown), exceeding 'Fair Housing' (HUD/FHA) requirements, for independent field application of bars.

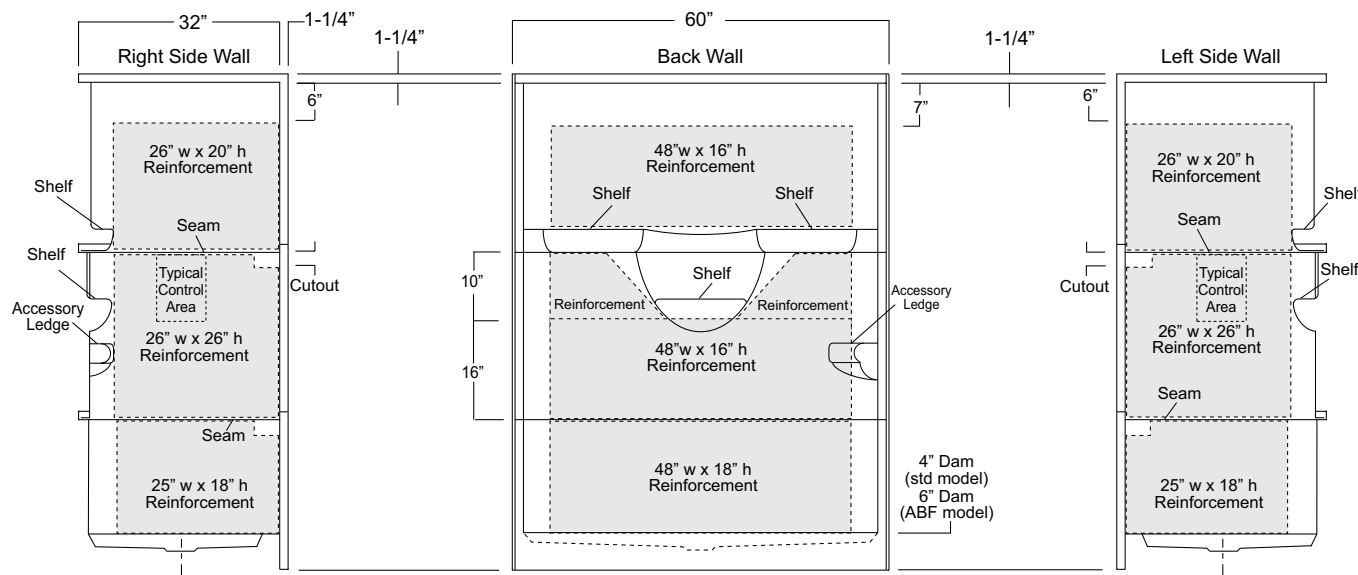
NOTE: Factory installed component packages available with listed reinforcement.



**Package Order No.: 3SF (3-side, full-wall reinforcement)**

Package Includes: Factory applied, 3-side, full-wrap, structurally reinforced wall areas (as shown), exceeding 'Fair Housing' (HUD/FHA) requirements, for independent field application of bars.

NOTE: Factory installed component packages available with listed reinforcement.



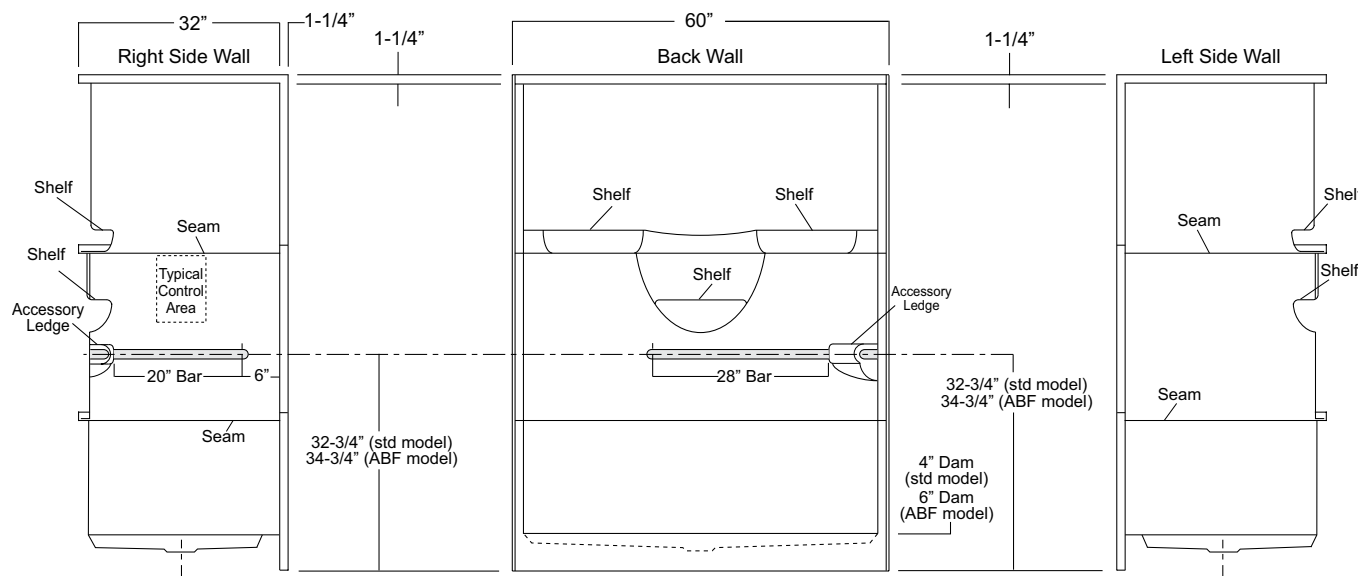
**Package Order No.: BP1-60 (2-bar only package)**

**Upgrade Package No.: BP1-60 WHT (1-1/4" dia., white powder coat, 2-bar only package)**

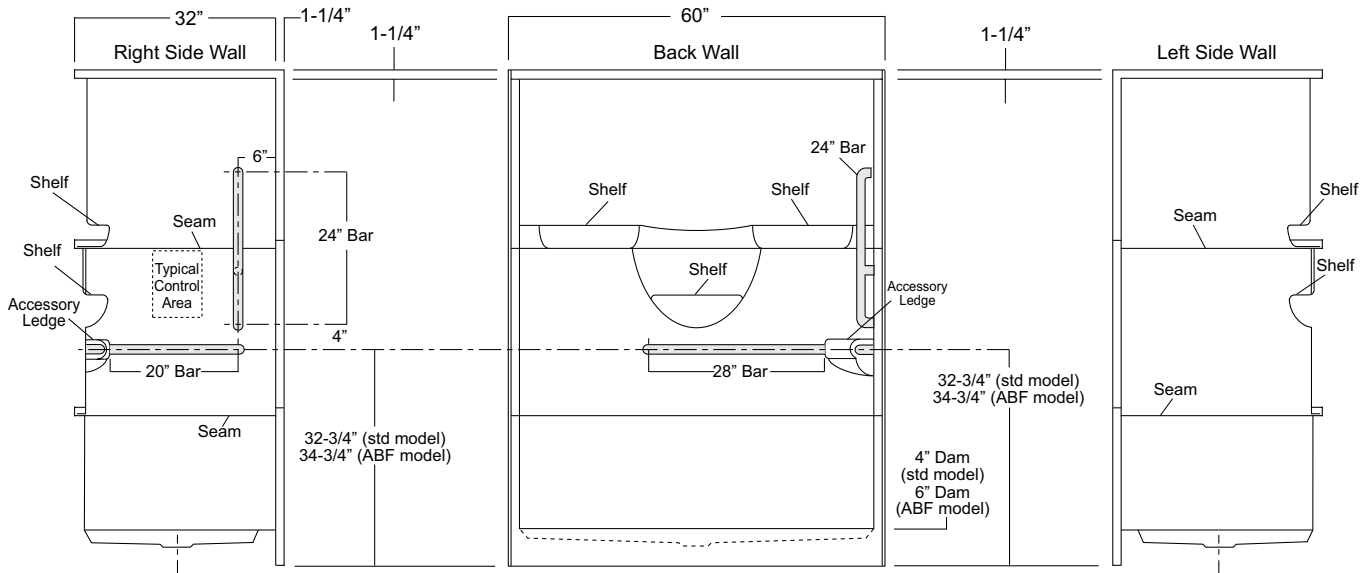
**BP1-60 SNK (1-1/4" dia., satin nickel, 2-bar only package)**

Package Includes: Factory installed, 1-1/2" dia. stainless steel, 2-bar package with basic reinforcement for components (as shown).

NOTE: Positioning of factory installed components allow for the installation of a shower enclosure.

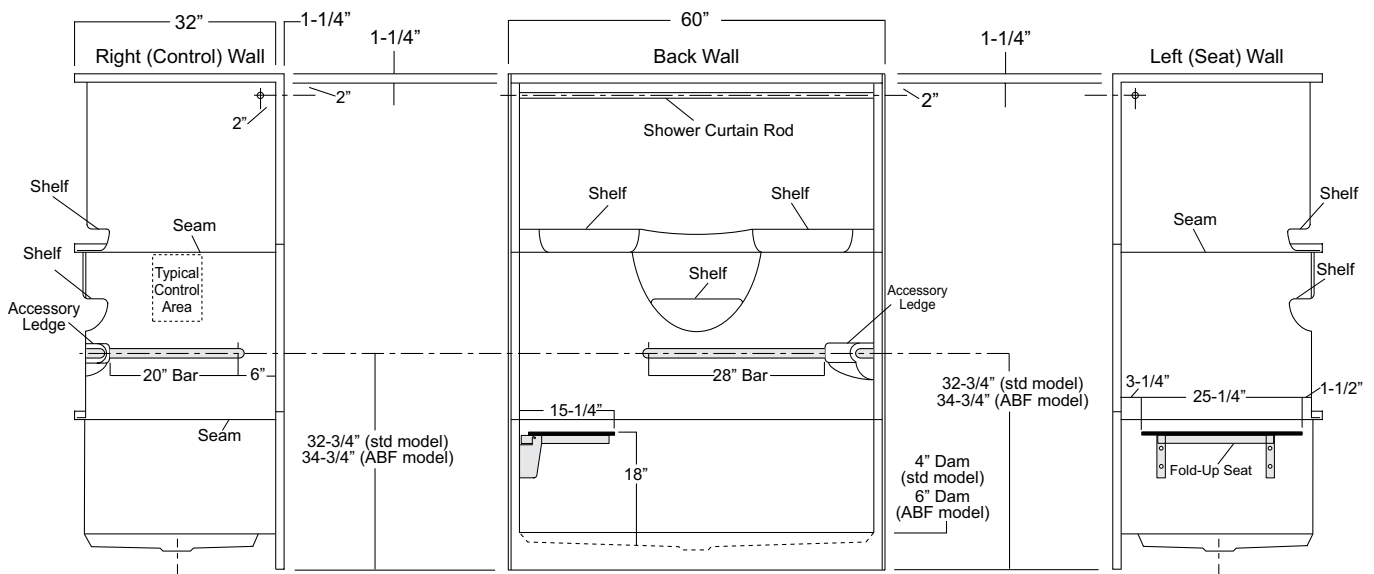


Package Includes: Factory installed, 1-1/2" dia. stainless steel, 3-bar package with basic reinforcement for components (as shown).  
NOTE: Positioning of factory installed components allow for the installation of a shower enclosure.



**ActivLife**  
**solutions**

Positioning of factory installed components prohibit the installation of a shower enclosure.



**Package Order No.: TLV-LS (RH drain-LH seat package)  
TLV-RS (LH drain-RH seat package)**

Package Includes: Factory installed, 1-1/2" dia. stainless steel, 3-bar package, 1" dia. shower rod, and side wall folding seat, with basic reinforcement for components (as shown).

NOTES: "RS or LS" designates seat wall.

Shower curtain rod may be deleted upon request.

Positioning of factory installed components prohibit the installation of a shower enclosure.

