

VURSA *kd* SERIES SHOWER STALL

Patent No.: US 8,918,927 B1

Oasis

SH3P-6032L-ABF / TLV-RS shown



MULTI-PIECE MODEL

SH3P-6032 (3-piece / center drain)

Rough-In Dimensions

60" wide x 33-1/4" deep x 76-3/4" high (w/ 4-inch dam)

Finished Dimensions

60" wide x 32" deep x 75-1/2" high (w/ 4-inch dam)

Unit Features

- Three - Piece Fiberglass Composite Construction
- Sanitary Grade Polyester Gelcoat Surface
- Front-Side Installation With Minimal Sealant Requirements
- 3-3/8" Dia. Center Drain
- Anti-Drip Front Dam Ledge
- Corner Accessory Ledge
- Generous, Multi-Level Back Wall Shelving
- Wall Design Accommodates Grab Bar & Seat Applications
- Textured Floor Pattern
- 1/2-inch Balsa Wood Core Floor Structure



Special Notes

- Optional ABF Model (provides 3-inches of drain clearance)
- 'QwikClic' Technology
- Factory Applied Reinforcement Packages Available
- Factory Applied Bar & Seat Packages Available

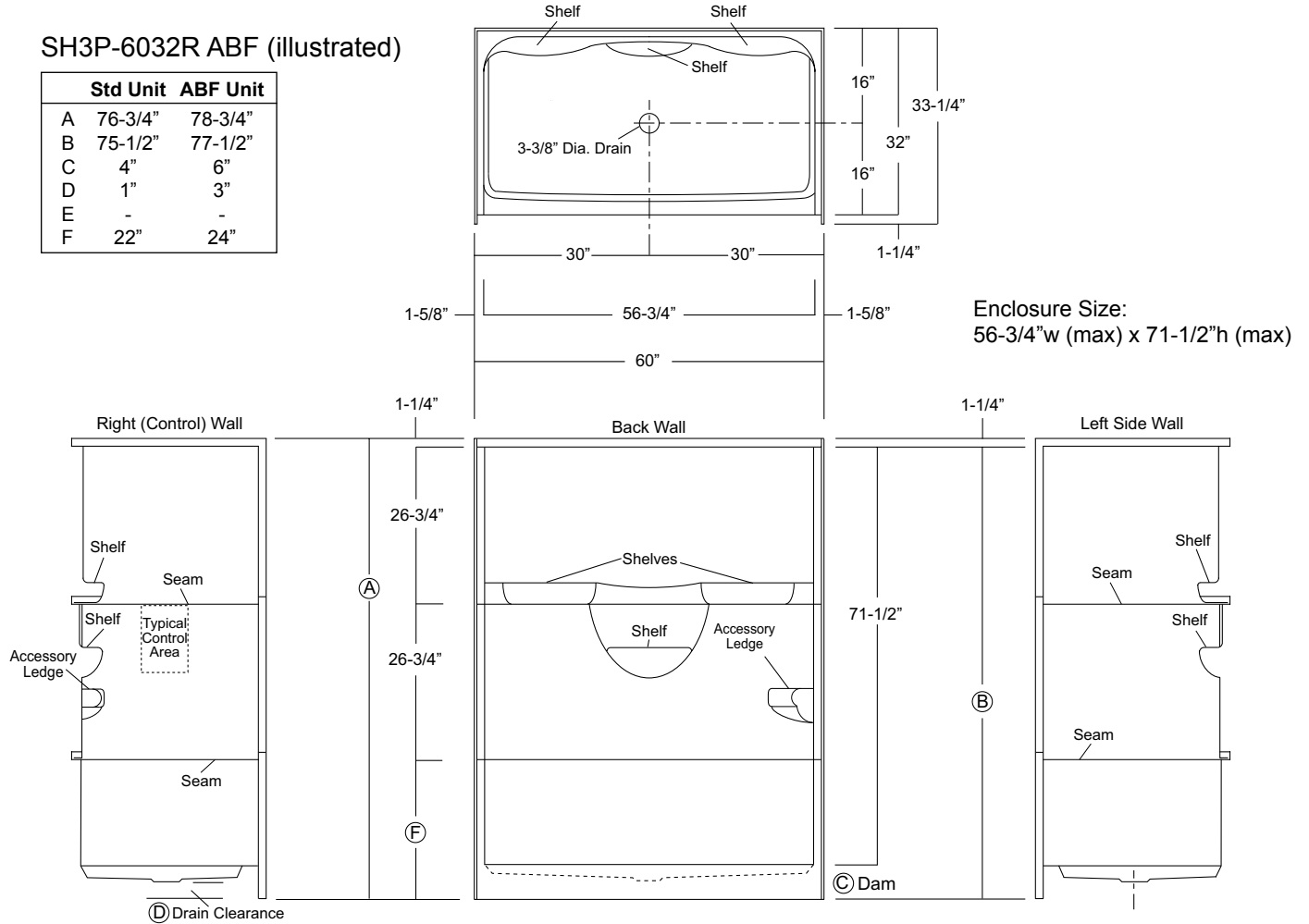
Order No.: SH3P-6032R (center drain / R control wall / 4" dam)
 SH3P-6032L (center drain / L control wall / 4" dam)

Order No.: SH3P-6032R ABF (center drain / R control wall / 6" dam)
 SH3P-6032L ABF (center drain / L control wall / 6" dam)

60" x 32", 3-piece gelcoated fiberglass shower with 'QuikClic', front side installation, 4" low profile dam (1" drain clearance) multi-level back wall shelves, RH or LH control wall, and center drain.

SH3P-6032R ABF (illustrated)

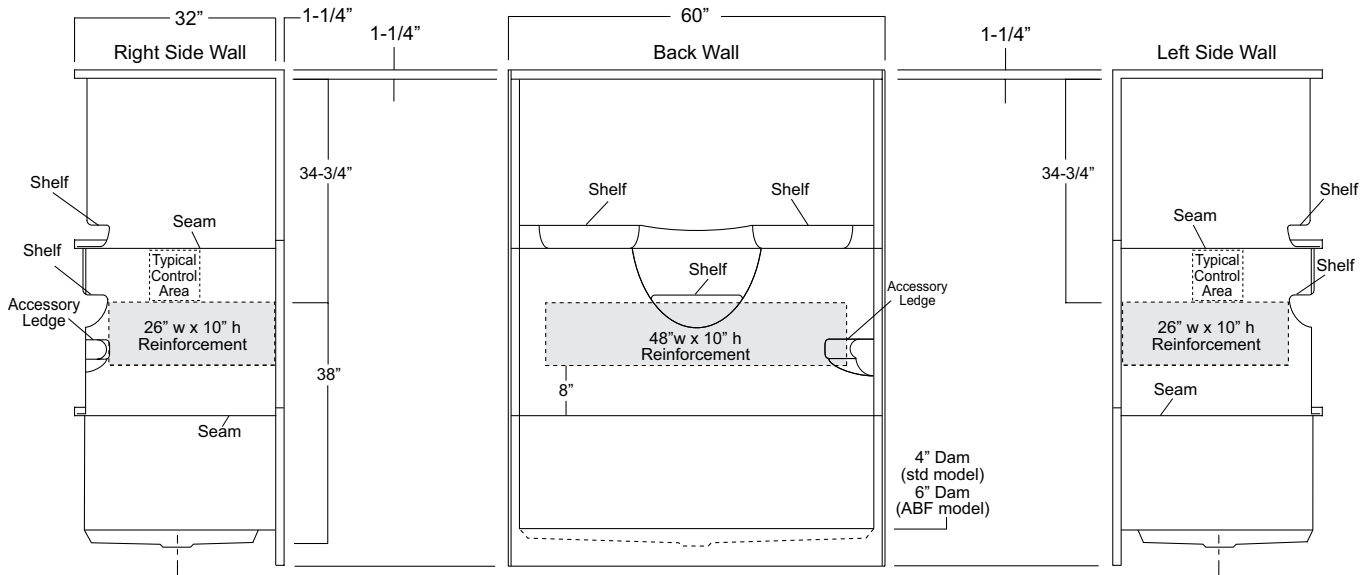
	Std Unit	ABF Unit
A	76-3/4"	78-3/4"
B	75-1/2"	77-1/2"
C	4"	6"
D	1"	3"
E	-	-
F	22"	24"



Package Order No.: FH (Fair Housing wall reinforcement)

Package Includes: Factory applied, HUD-FHA compliant (Fair Housing), structurally reinforced wall areas (as shown) for independent field application of bars.

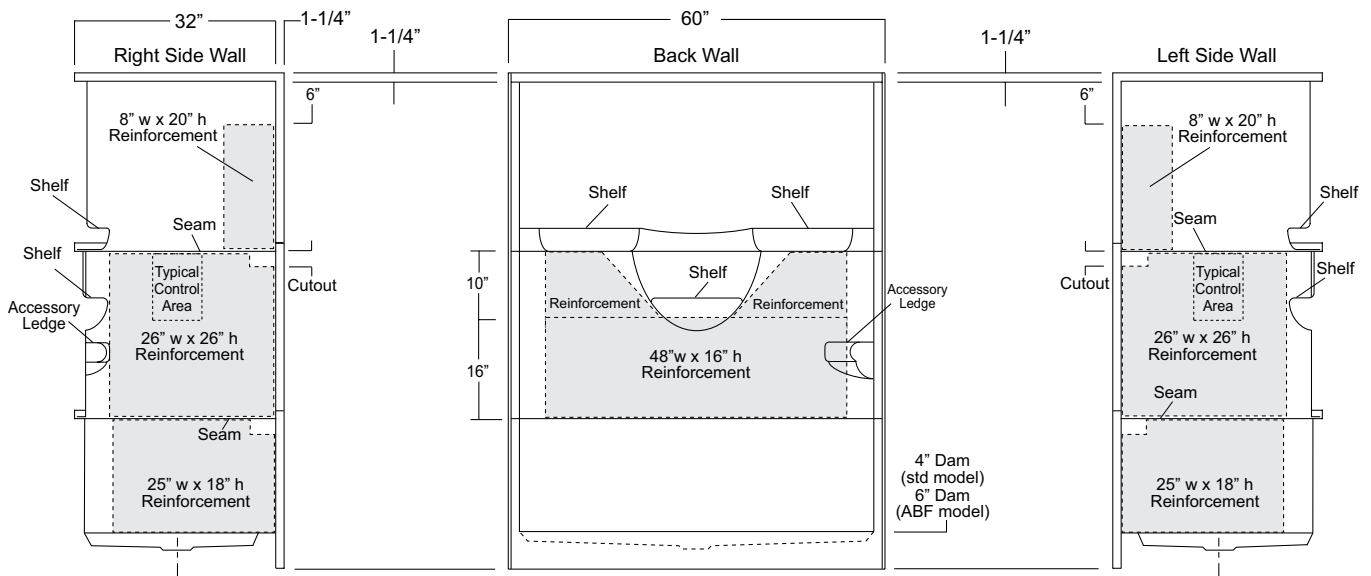
NOTE: Factory installed stainless steel shower curtain rod available.



Package Order No.: 3SM (3-side, mid-level wall reinforcement)

Package Includes: Factory applied, 3-side, mid-level, structurally reinforced wall areas (as shown), exceeding 'Fair Housing' (HUD/FHA) requirements, for independent field application of bars.

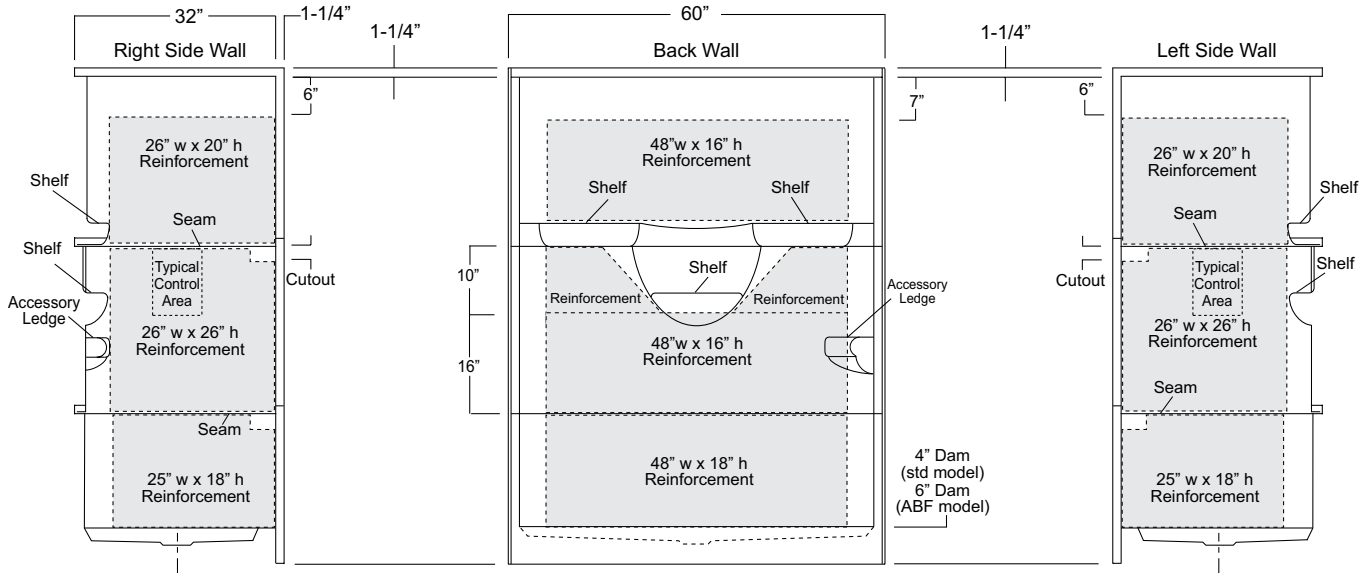
NOTE: Factory installed component packages available with listed reinforcement.



Package Order No.: 3SF (3-side, full-wall reinforcement)

Package Includes: Factory applied, 3-side, full-wrap, structurally reinforced wall areas (as shown), exceeding 'Fair Housing' (HUD/FHA) requirements, for independent field application of bars.

NOTE: Factory installed component packages available with listed reinforcement.

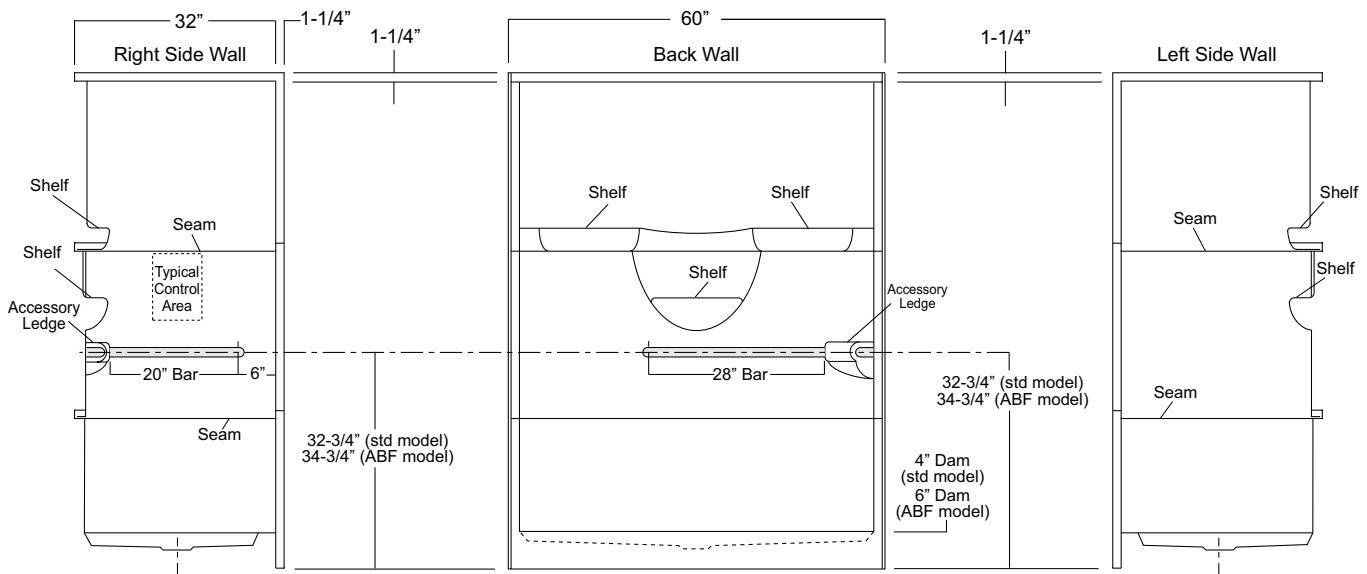


Package Order No.: BP1-60 (2-bar only package)

- Upgrade Package No.: BP1-60 WHT (1-1/4" dia., white powder coat, 2-bar only package)**
- BP1-60 OFW (1-1/4" dia., off-white powder coat, 2-bar only package)**
- BP1-60 SNK (1-1/4" dia., satin nickel, 2-bar only package)**

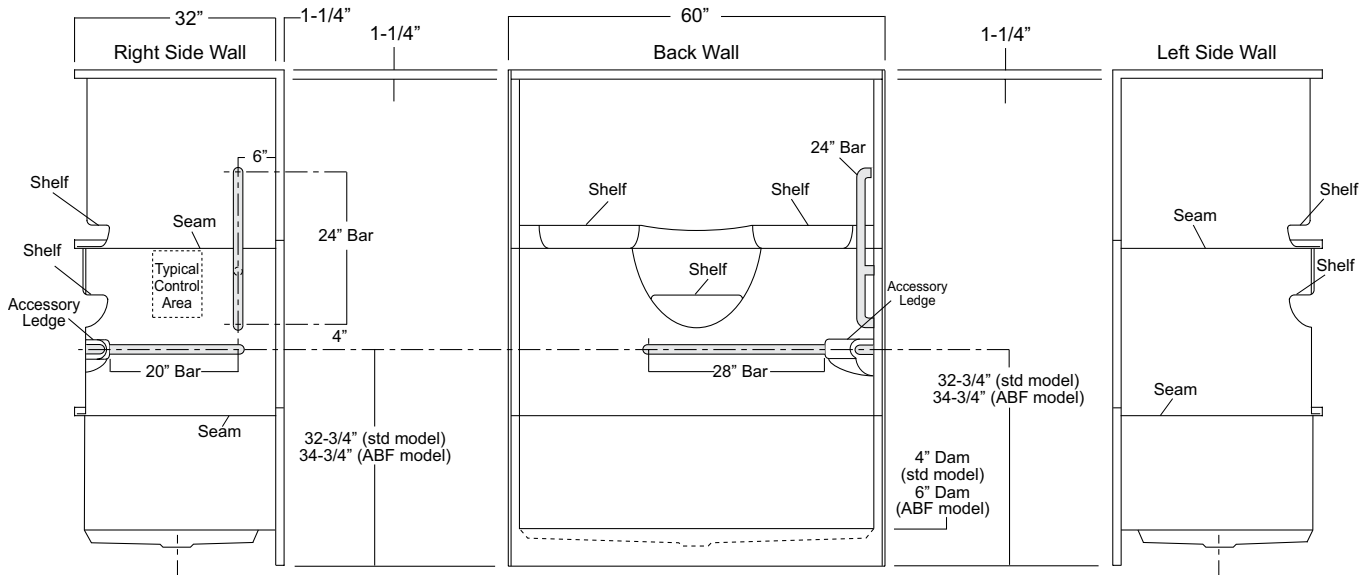
Package Includes: Factory installed, 1-1/2" dia. stainless steel, 2-bar package with basic reinforcement for components (as shown).

NOTE: Positioning of factory installed components allow for the installation of a shower enclosure.



Package Order No.: BP2-60 (3-bar only package)
Upgrade Package No.: BP2-60 WHT (1-1/4" dia., white powder coat, 3-bar only package)
 BP2-60 OFW (1-1/4" dia., off-white powder coat, 3-bar only package)
 BP2-60 SNK (1-1/4" dia., satin nickel, 3-bar only package)

Package Includes: Factory installed, 1-1/2" dia. stainless steel, 3-bar package with basic reinforcement for components (as shown).
 NOTE: Positioning of factory installed components allow for the installation of a shower enclosure.



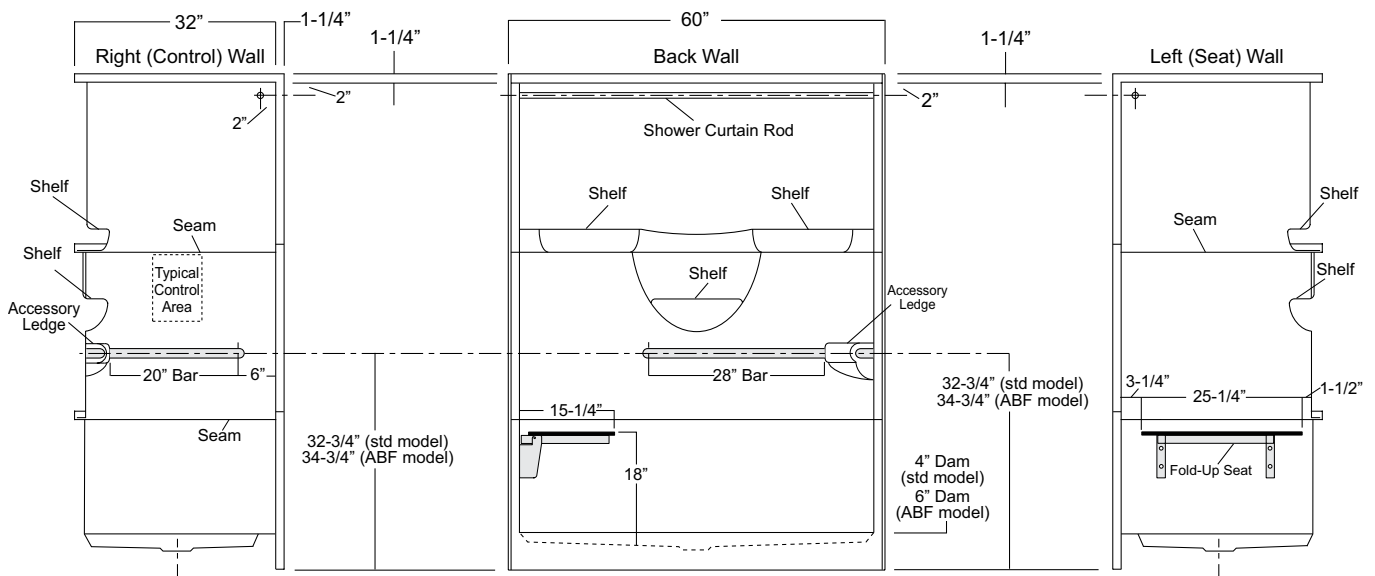
Package Order No.: TL-LS (RH drain-LH seat package)
 TL-RS (LH drain-RH seat package)

Package Includes: Factory installed, 1-1/2" dia. stainless steel, 2-bar package, 1" dia. shower rod, and side wall folding seat, with basic reinforcement for components (as shown).

NOTES: "RS or LS" designates seat wall.

Shower curtain rod may be deleted upon request.

Positioning of factory installed components prohibit the installation of a shower enclosure.



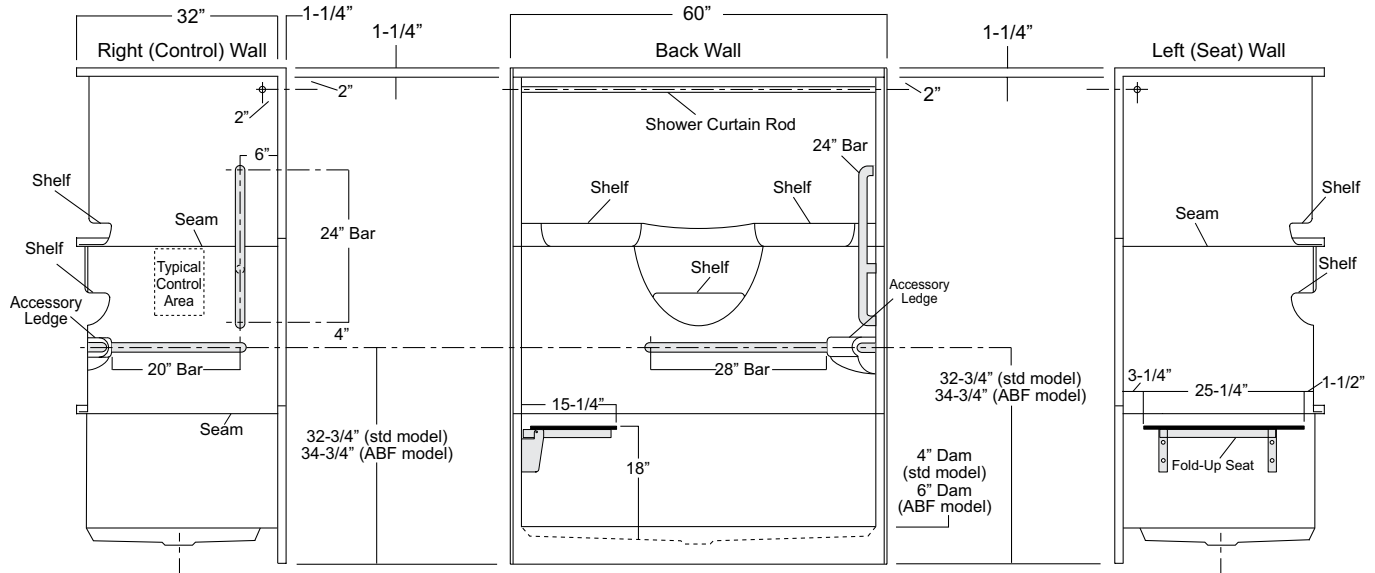
Package Order No.: TLV-LS (RH drain-LH seat package)
 TLV-RS (LH drain-RH seat package)

Package Includes: Factory installed, 1-1/2" dia. stainless steel, 3-bar package, 1" dia. shower rod, and side wall folding seat, with basic reinforcement for components (as shown).

NOTES: "RS or LS" designates seat wall.

Shower curtain rod may be deleted upon request.

Positioning of factory installed components prohibit the installation of a shower enclosure.



Photographic images may include optional components and appear different than actual product.
 Dimensions shown are maximum. Due to the nature of the materials involved, actual unit dimensions can vary (tolerances: +/-1/8 inch)
 Oasis reserves the right to modify or discontinue product and/or associated equipment without prior written or verbal notification or obligation.