

# Oasis 3-Piece, 60-inch, Center Drain Shower Compartment With ActivLife 3-Wall Mid-Level Reinforcement Wrap Package

60-inch / Private Access / Reinforced Only



**Specification** – Oasis 3-piece FRP gelcoat shower compartment SH3P-6030 center drain shower with L or R control wall, offered in a standard 4-inch or 6-inch (ABF) dam configuration. ActivLife package includes factory applied, 3-wall, mid-level wrap reinforcement, exceeding (HUD/FHA) 'Fair Housing' requirements.

**Standards Certification:**

The shower compartment listed is manufactured in compliance with ANSI Z124 Standards, and certified through an ongoing, independent quality assurance and testing program.



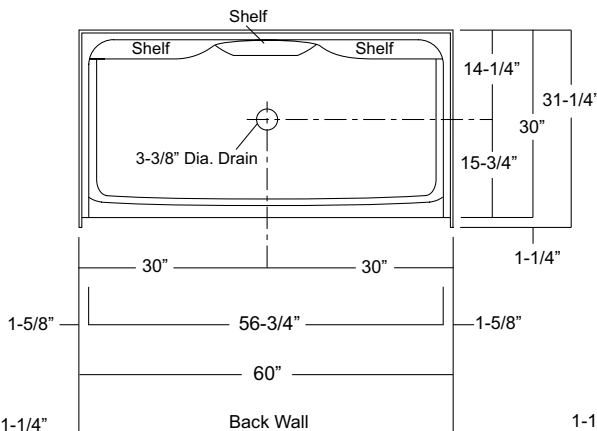
**SH3P-6030 R / 3SM**  
 (R control wall / 3-side mid-level reinforcement wrap)  
 Model & Package Illustrated



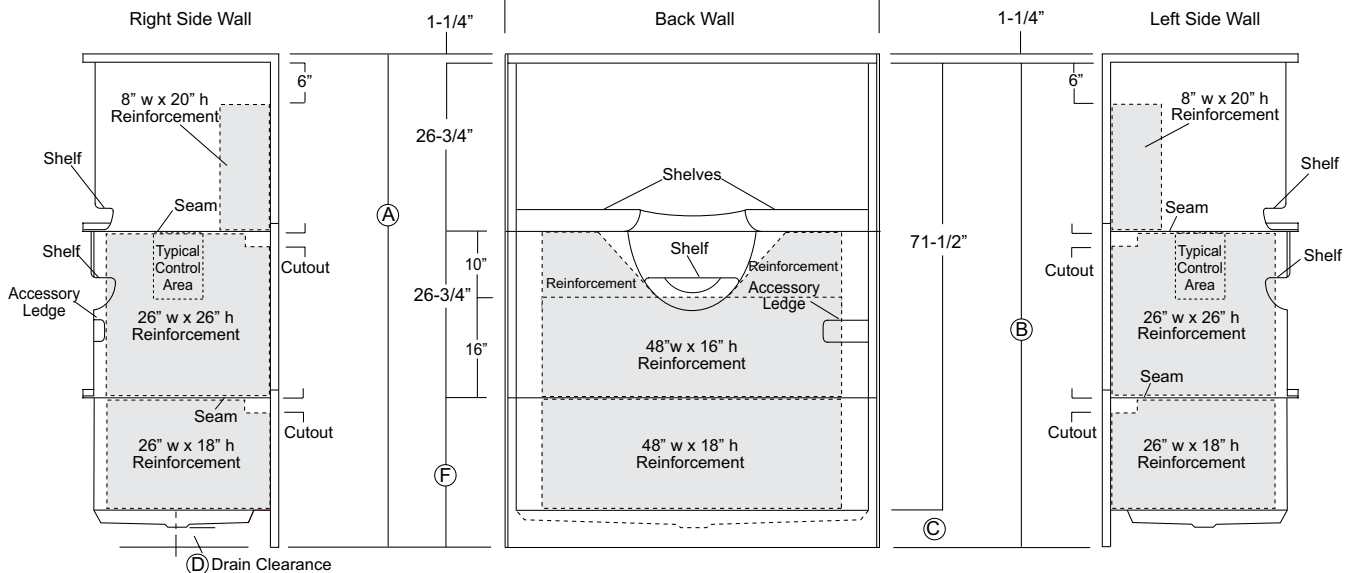
Home Innovation  
LAB CERTIFIED™



	Std Unit	ABF Unit
A	76-3/4"	78-3/4"
B	75-1/2"	77-1/2"
C	4"	6"
D	1"	3"
E	-	-
F	22"	24"



Enclosure Size:  
56-3/4"w (max) x 71-1/2"h (max)



Dimensions shown are maximum. Due to the nature of the materials involved, actual unit dimensions can vary (tolerances: + / - 1/8 inch). Oasis reserves the right to modify or discontinue product and/or associated equipment without prior written or verbal notification or obligation.

Model ID	Package Code	Description (define configuration referencing control wall)
----------	--------------	---

SH3P-6030 L (L control wall) / 3SM SH3P-6030 R (R control wall) / 3SM		60" x 30", 3-piece, center drain shower with L or R control wall, 4" (std) or 6" (ABF) dam and ActivLife 3-wall mid-level reinforcement wrap package.
--	--	---

**Available Factory Installed Packages** (model available without any component or reinforcement packages)

**Component Packages:**

- 1. TLV package code: 2-wall, 3-bar package with phenolic folding RH or LH seat
- 2. TL package code: 2-wall, 2-bar package with phenolic folding RH or LH seat
- 3. BP2 package code: 2-wall, 3-bar package
- 4. BP1 package code: 2-wall, 2-bar package

**Reinforced ONLY Packages:**

- 5. FH package code: reinforcement for horizontal bars, based on HUD/FHA-Fair Housing
- 6. 3SM & 3SF package codes: expanded reinforcement packages, (with or without package components)

