

VURSA *kd* SERIES SHOWER STALL

Patent No.: US 8,918,927 B1

Oasis

SH3P-3636 BP1-R



MULTI-PIECE MODEL



SH3P-3636 (3-piece)

Rough-In Dimensions

36" wide x 37-1/4" deep x 76" high (with 4-inch dam)

Finished Dimensions

36" wide x 36" deep x 74-3/4" high (with 4-inch dam)

Unit Features



- Three - Piece Fiberglass Composite Construction
- Sanitary Grade Polyester Gelcoat Surface
- Front-Side Installation With Minimal Sealant Requirements
- 3-3/8" Dia. Center Drain
- Anti-Drip Front Dam Ledge
- Twin Corner Accessory Ledges
- Upper Back Wall Shelving
- Wall Design Accommodates Grab Bar Applications
- Textured Floor Pattern
- 1/2-inch Balsa Wood Core Floor Structure

Special Notes

- Optional ABF Model (provides 3-inches of drain clearance)
- 'QwikClic' Technology
- Factory Applied Reinforcement Packages Available
- Factory Applied Bar Packages Available

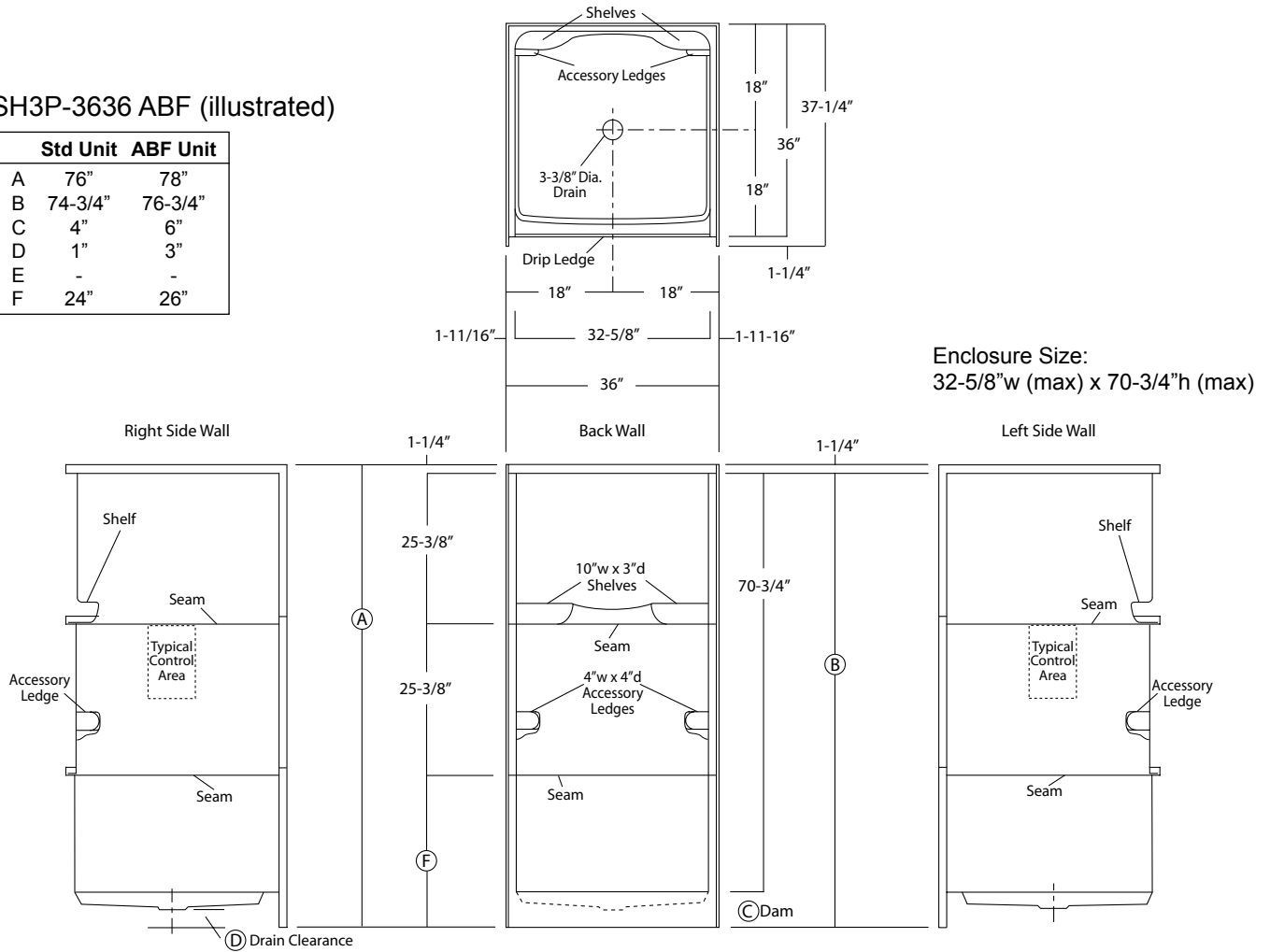
Order No.: SH3P-3636 (4" dam)

Order No.: SH3P-3636 ABF (6" dam)

36" x 36", 3-piece gelcoated fiberglass shower with 'QuikClic', front side installation, 4" low profile dam (1" drain clearance) upper-level back wall shelves, corner accessory ledges and center drain.

SH3P-3636 ABF (illustrated)

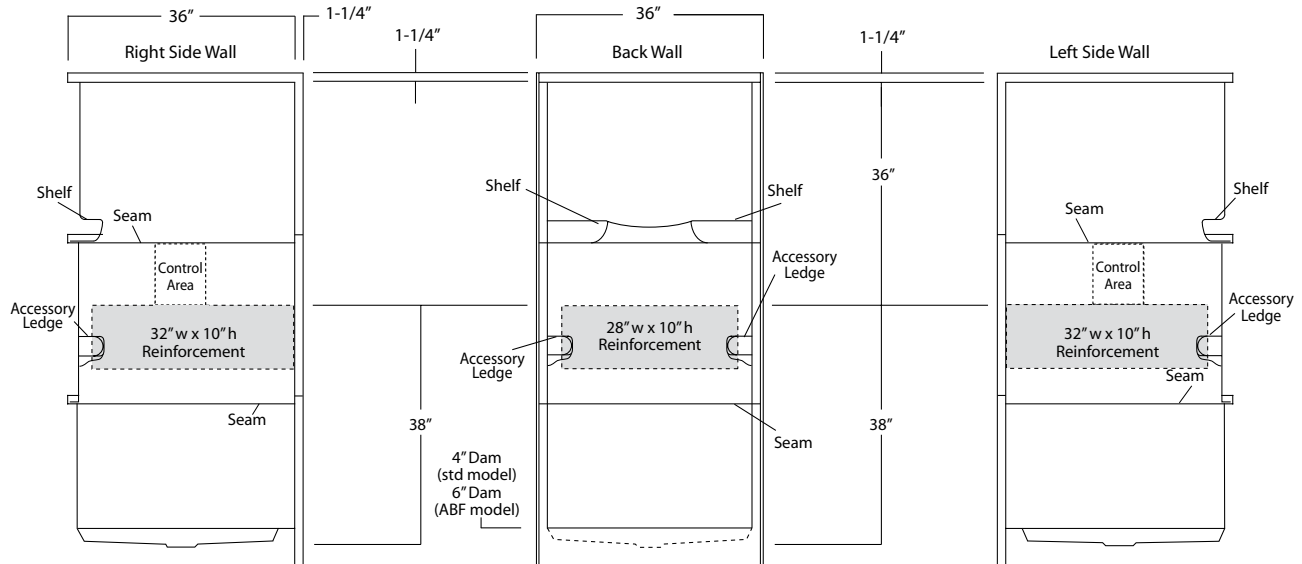
	Std Unit	ABF Unit
A	76"	78"
B	74-3/4"	76-3/4"
C	4"	6"
D	1"	3"
E	-	-
F	24"	26"



Enclosure Size:
32-5/8"w (max) x 70-3/4"h (max)

Package Order No.: FH (Fair Housing wall reinforcement)

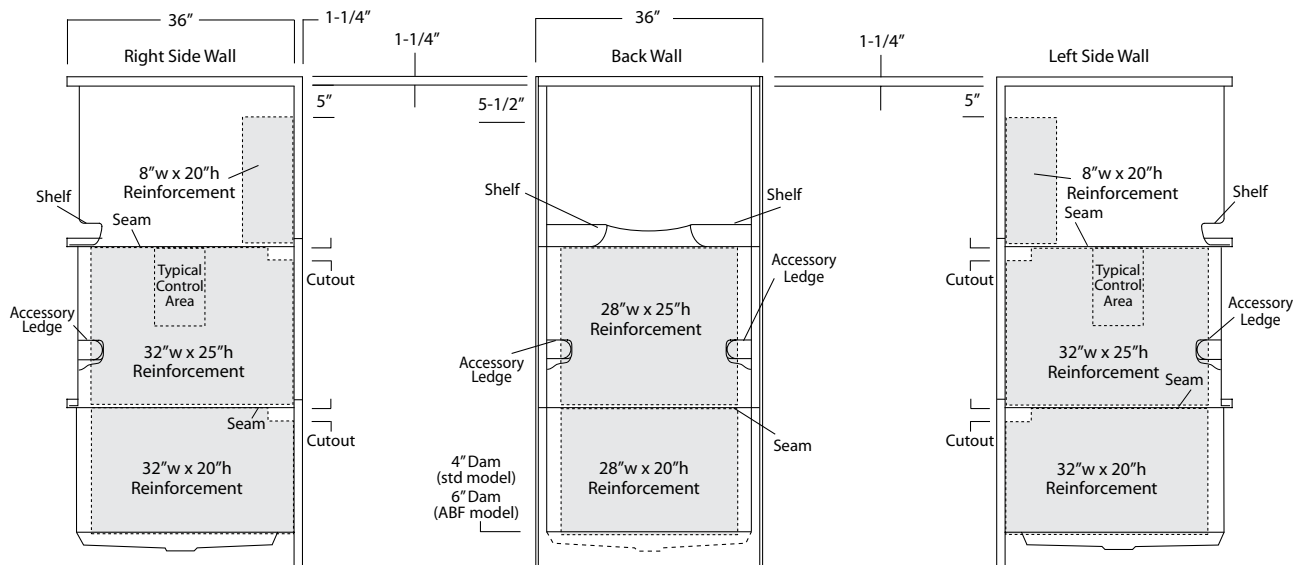
Package Includes: Factory applied, HUD-FHA compliant (Fair Housing), structurally reinforced wall areas (as shown) for independent field application of bars.



Package Order No.: 3SM (3-side, mid-level wall reinforcement)

Package Includes: Factory applied, 3-side, mid-level, structurally reinforced wall areas (as shown), exceeding 'Fair Housing' (HUD/FHA) requirements, for independent field application of bars.

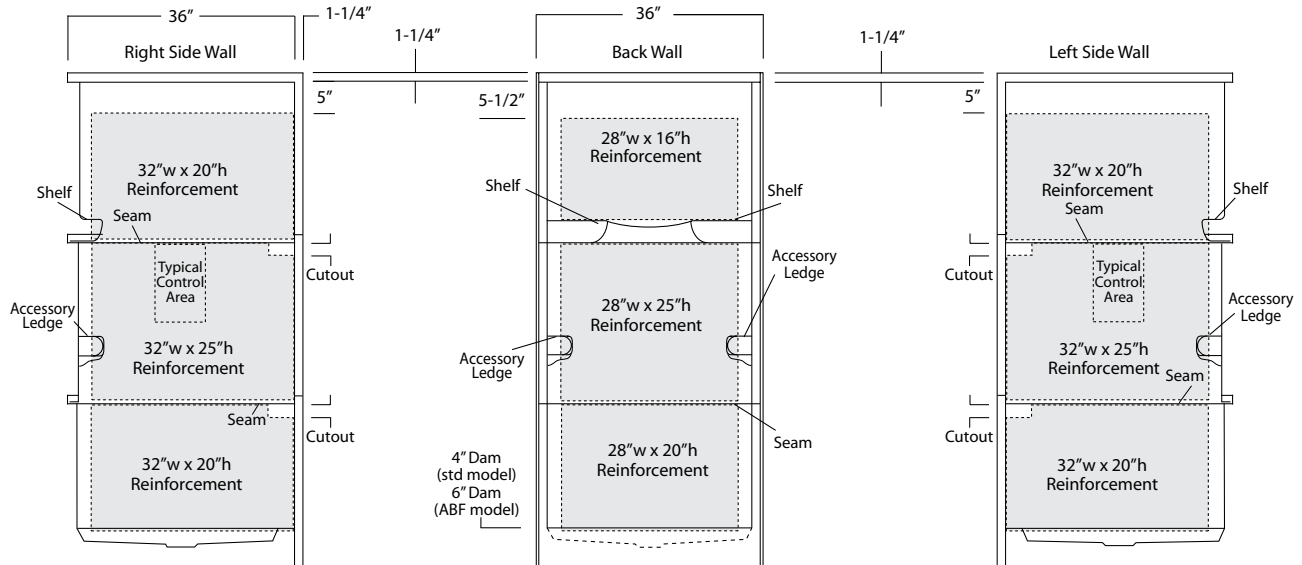
NOTE: Factory installed component packages available with listed reinforcement.



Package Order No.: 3SF (3-side, full-wall reinforcement)

Package Includes: Factory applied, 3-side, full-wrap, structurally reinforced wall areas (as shown), exceeding 'Fair Housing' (HUD/FHA) requirements, for independent field application of bars.

NOTE: Factory installed component packages available with listed reinforcement.



Package Order No.: BP1-(R or L) (2-bar only package)

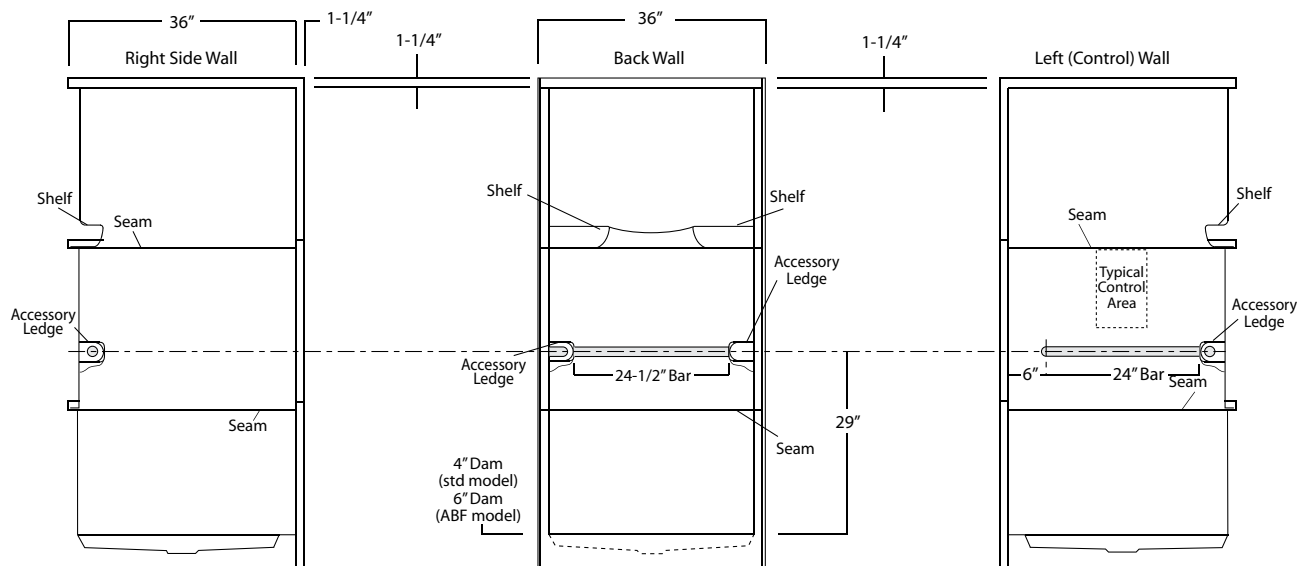
Upgrade Package No.: BP1-(R or L) WHT (1-1/4" dia., white powder coat, 2-bar only package)

BP1-(R or L) SNK (1-1/4" dia., satin nickel, 2-bar only package)

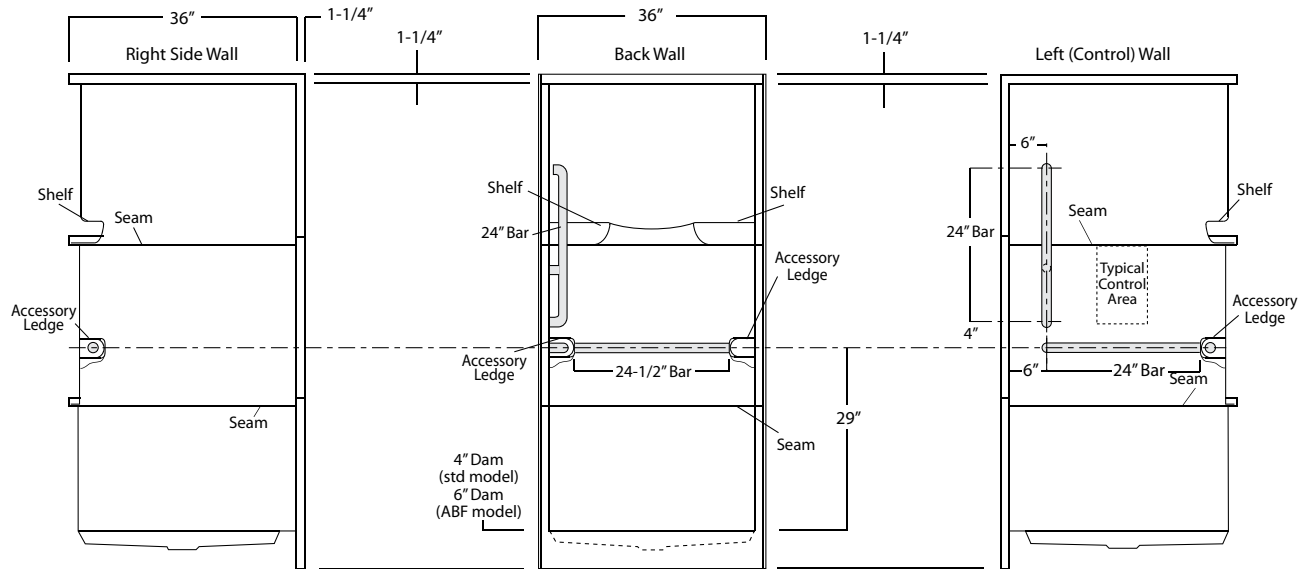
Package Includes: Factory installed, 1-1/2" dia. stainless steel, 2-bar package with basic reinforcement for components (as shown).

NOTES: Positioning of factory installed components allow for the installation of a shower enclosure.

"R or L" designates RH or LH control wall (BP1-L illustrated).



"R or L" designates RH or LH control wall (BP2-L illustrated).



ActivLife
solutions

Technical drawing of a three-door refrigerator showing internal layout and dimensions. The drawing includes the following labels and dimensions:

- Right Side Wall:** 36" width. Labels include Shelf, Seam, Typical Control Area, Accessory Ledge, and Seam.
- Back Wall:** 36" width. Labels include Shelf, Accessory Ledge, 24-1/2" Bar, and Seam.
- Left Side Wall:** 36" width. Labels include Shelf, Seam, Typical Control Area, Accessory Ledge, and Seam.
- Dimensions:**
 - 1-1/4" (gap between side walls and back wall)
 - 29" (height of the main compartment)
 - 4" Dam (std model) / 6" Dam (ABF model) (height of the bottom compartment)

SH3P3636.01.031023