

## VURSA SERIES SHOWER STALL

**Oasis**



60-INCH MODEL

**SH-6036RS (Right Seat)**

60-INCH MODEL

**SH-6036LS (Left Seat)**

Rough-In Dimensions

60" wide x 37-1/4" deep x 76-3/4" high (with low profile dam)

Finished Dimensions

60" wide x 36" deep x 75-1/2" high (with low profile dam)

Unit Features

- One - Piece Fiberglass Composite Construction
- Sanitary Grade Polyester Gelcoat Surface
- 3-3/8" Dia. Center Drain (see following pages)
- Elevated Corner Accessory Tower
- Generous, Multi-Level Back Wall Shelving
- Single, Ergonomic Seat
- Ergonomic Corner Foot Rest For Shaving
- Flat Wall Design To Accommodate Grab Bar Applications
- Center, Lower Accessory Shelf With Wash Cloth Rod
- Low Profile Dam (standard)
- Textured Floor Pattern
- Balsa Wood Core Floor Structure

Special Notes

- Optional ABF Model Provides 3 Inches of Drain Clearance
- Optional Fair Housing Reinforcement Package (see following pages)

**VURSA Standard Module**

Order No.: SH-6036RS (RH seat)  
SH-6036LS (LH seat)

60" x 36", one-piece gelcoated fiberglass shower stall with a single right or left hand corner seat, 4" low profile dam (1" drain clearance), wall surround, and center drain.

**VURSA Above Floor Rough-In Module**

Order No.: SH-6036RS ABF (RH seat - 6" dam)  
SH-6036LS ABF (LH seat - 6" dam)

60" x 36", one-piece gelcoated fiberglass shower stall with a single right or left hand corner seat, 6" dam (3" drain clearance for above floor plumbing), wall surround, and center drain.

---

**VURSA Standard Module  
with Fair Housing Package**

Order No.: SH-6036RS / FH (RH seat) (Fair Housing)  
SH-6036LS / FH (LH seat) (Fair Housing)

60" x 36", one-piece gelcoated fiberglass shower stall with a single right or left hand corner seat, 4" low profile dam (1" drain clearance), wall surround, center drain, and Fair Housing compliant wall reinforcement for site installed grab bars.

**VURSA Above Floor Rough-In Module  
with Fair Housing Package**

Order No.: SH-6036RS ABF / FH (RH seat - 6" dam)  
(Fair Housing Reinforcement)  
SH-6036LS ABF / FH (LH seat - 6" dam)  
(Fair Housing Reinforcement)

60" x 36", one-piece gelcoated fiberglass shower stall with a single right or left hand corner seat, 6" dam (3" drain clearance for above floor plumbing), wall surround, center drain, and Fair Housing compliant wall reinforcement for site installed grab bars.

---

**VURSA Standard Module  
with Dual Corner Bar Package**

Order No.: SH-6036RS / BP1-60 (RH seat) (Bar Package)  
SH-6036LS / BP1-60 (LH seat) (Bar Package)

60" x 36", one-piece gelcoated fiberglass shower stall with a single right or left hand corner seat, 4" low profile dam (1" drain clearance), structurally reinforced wall surround, center drain, and factory installed corner bar package.

**VURSA Above Floor Rough-In Module  
with Dual Corner Bar Package**

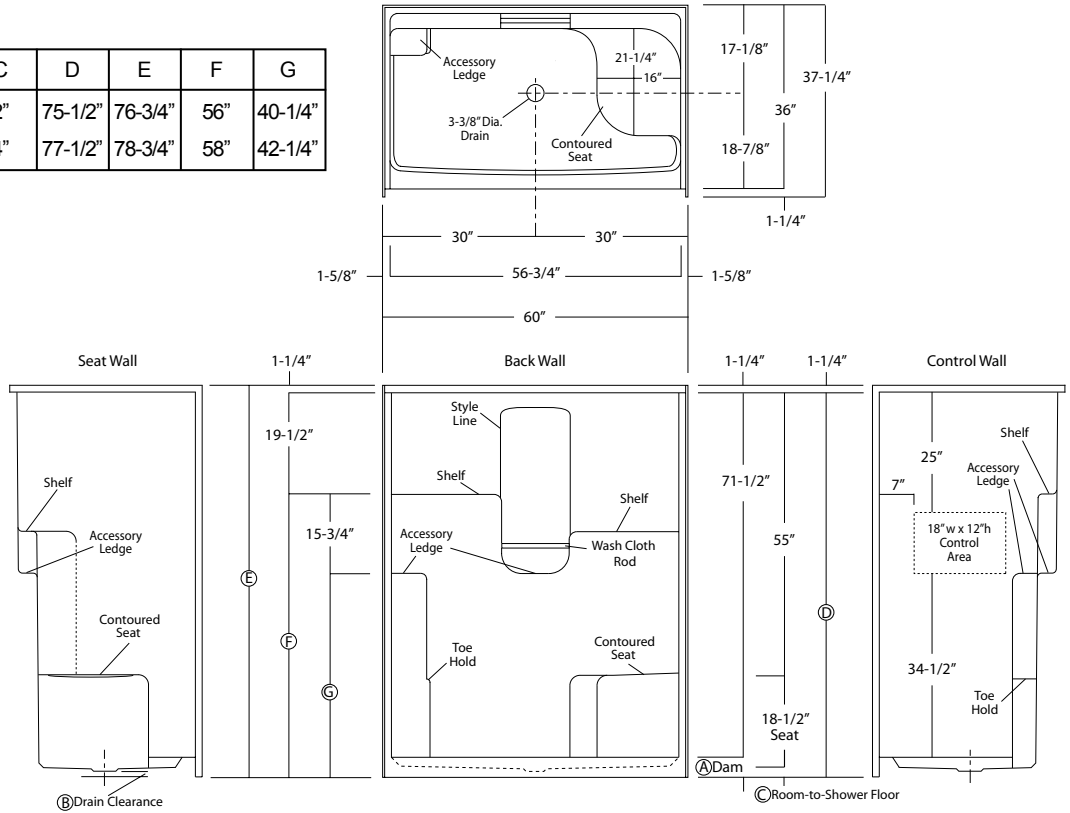
Order No.: SH-6036RS ABF / BP1-60 (RH seat - 6" dam)  
(Bar Package)  
SH-6036LS ABF / BP1-60 (LH seat - 6" dam)  
(Bar Package)

60" x 36", one-piece gelcoated fiberglass shower stall with a single right or left hand corner seat, 6" dam (3" drain clearance for above floor plumbing), structurally reinforced wall surround, center drain, and factory installed bar package.

**NOTE:** A series of alternate, factory installed, bar positions has been developed for this model. Refer to illustration for details. The number and the position of available bars must be defined when ordering. Alternate bar positions only available with 26 inch bars.

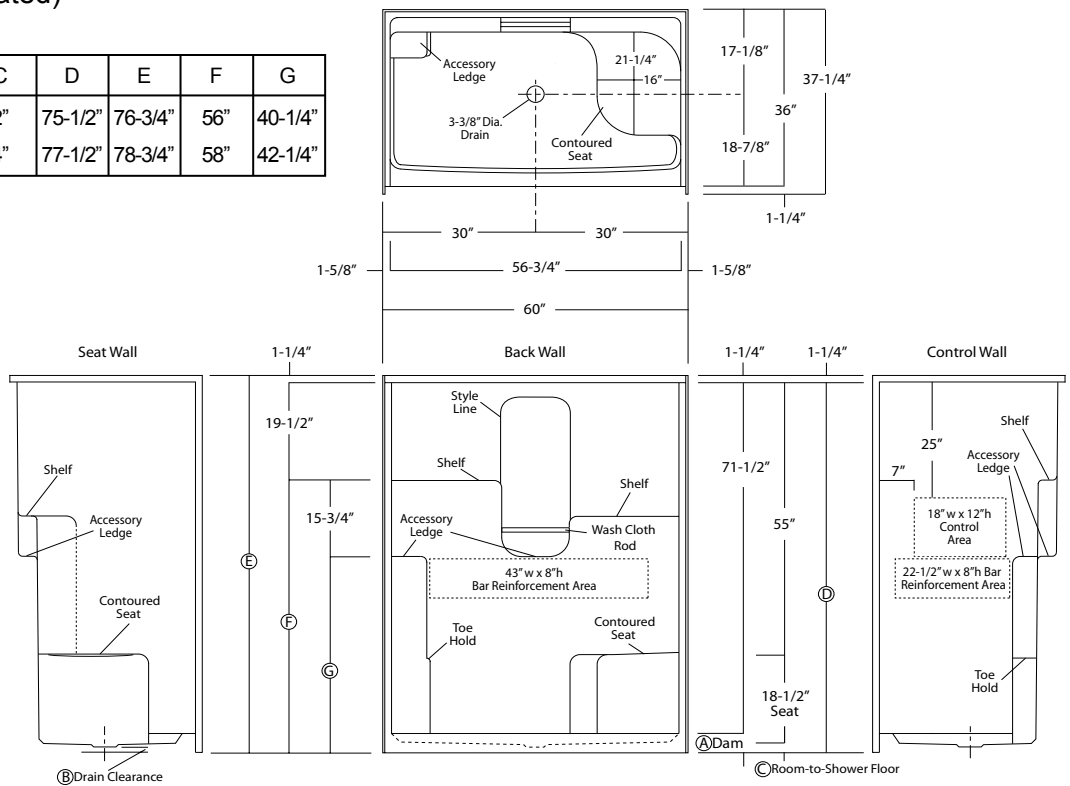
## SH-6036RS (illustrated)

	A	B	C	D	E	F	G
Std. Model	4"	1"	2"	75-1/2"	76-3/4"	56"	40-1/4"
ABF Model	6"	3"	4"	77-1/2"	78-3/4"	58"	42-1/4"



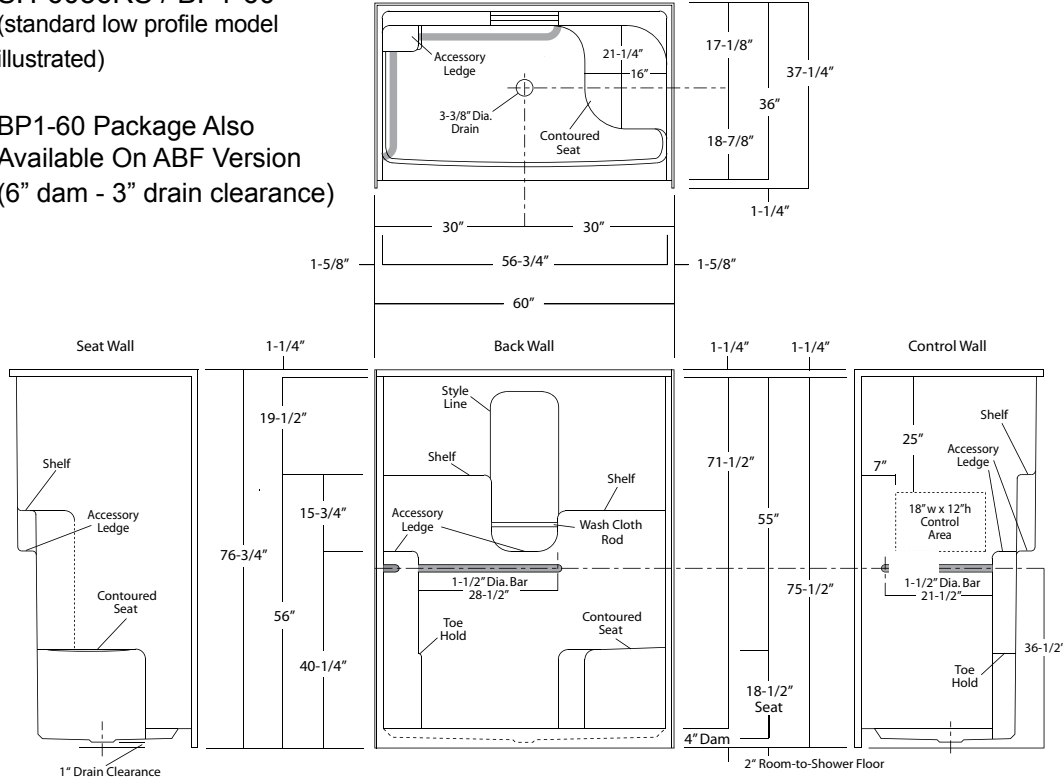
## SH-6036RS / FH (illustrated)

	A	B	C	D	E	F	G
Std. Model	4"	1"	2"	75-1/2"	76-3/4"	56"	40-1/4"
ABF Model	6"	3"	4"	77-1/2"	78-3/4"	58"	42-1/4"



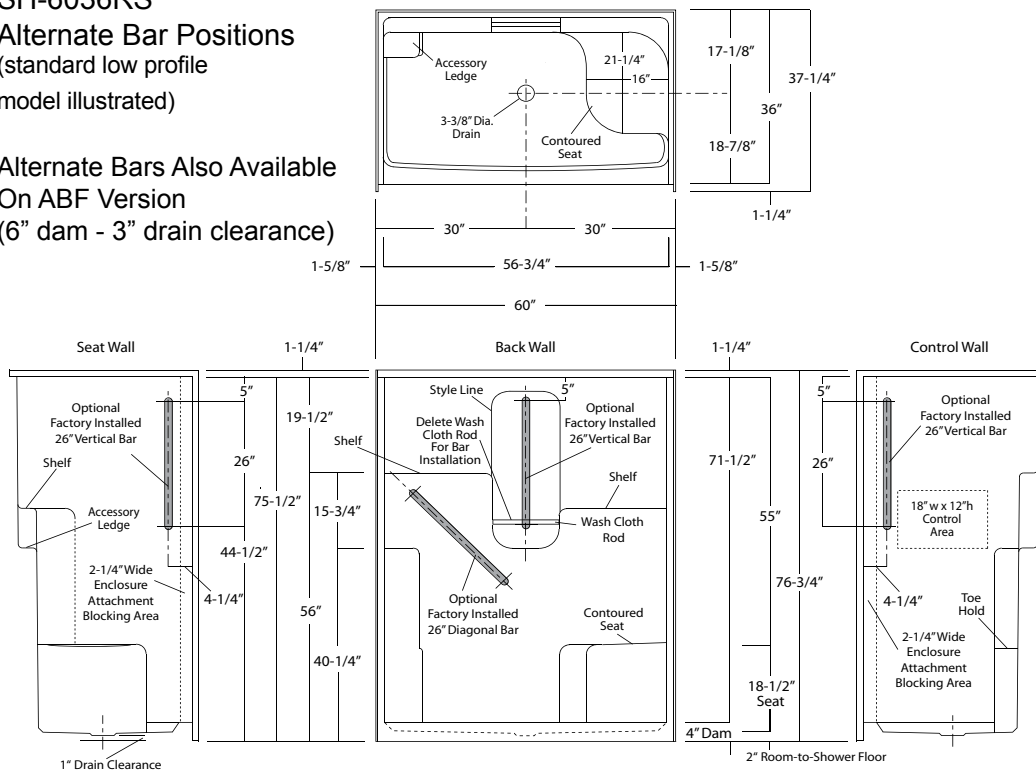
**SH-6036RS / BP1-60**  
(standard low profile model illustrated)

BP1-60 Package Also Available On ABF Version  
(6" dam - 3" drain clearance)



**SH-6036RS**  
**Alternate Bar Positions**  
(standard low profile model illustrated)

Alternate Bars Also Available On ABF Version  
(6" dam - 3" drain clearance)



Alternate Bar Positions  
Only Available With 26 Inch Bars.

Photographic images may include optional components and appear different than actual product. Dimensions shown are maximum. Due to the nature of the materials involved, actual unit dimensions can vary (tolerances: +0 / -3/8 inch). Oasis reserves the right to modify or discontinue product and/or associated equipment without prior written or verbal notification or obligation.